

**LONDON  
VICTORIA  
GROUPS** 



**LONDON  
VICTORIA  
GROUPS** 



**LONDON  
VICTORIA  
GROUPS** 



**LONDON  
VICTORIA  
GROUPS** 

## **163 Iverson Road**

, London NW6 2RB

- Private Balcony
- Excellent Transport Links
- EPC-B
- Prime West Hampstead Location
- Floor-to-ceiling windows
- CTB-D

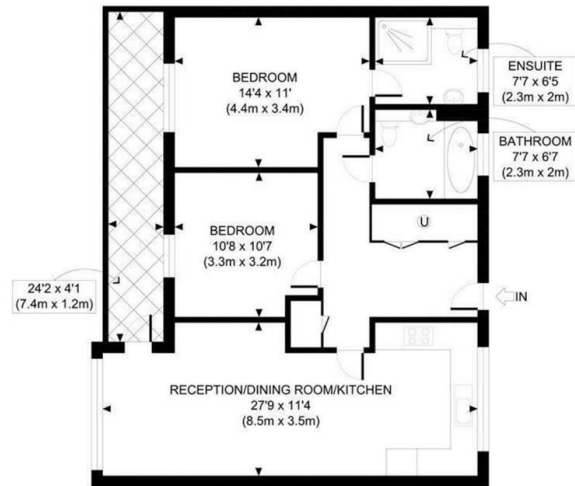
**£2,900 Per Month**



**LONDON  
VICTORIA  
GROUPS** 

Local Authority **Camden**  
Council Tax Band **D**  
EPC Rating **B**

## Iverson Road, NW6



1st Floor

GROSS INTERNAL AREA  
TOTAL: 75 m<sup>2</sup> / 807 ft<sup>2</sup>

**London Office Office**  
Spaces Victoria, 25 Wilton Road, Pimlico,  
London, SW1V 1LW

**Contact**  
020 3084 3094  
XL@londonvictoriagroups.co.uk  
www.londonvictoriagroups.co.uk

Agents Note: Whilst every care has been taken to prepare these particulars, they are for guidance purposes only. All measurements are approximate and for general guidance purposes only and whilst every care has been taken to ensure accuracy, they should not be relied upon and potential buyers/tenants are advised to recheck the measurements.

