



23, Stewart Place, Ware  
SG12 9UN

Asking Price £255,000



[stevenoates.com](http://stevenoates.com)





## 23 Stewart Place, Ware, Hertfordshire, SG12 9UN

\*\*\*\*CHAIN FREE\*\*\*\* Welcome to this charming two-bedroom apartment located in Stewart Place in the heart of Ware. This well-presented property is ideally situated just a stone's throw from the vibrant town centre and directly opposite Ware Train Station, making it perfect for commuters and those who enjoy the convenience of local amenities. As a top-floor apartment, it benefits from lift access to all floors, ensuring ease of movement throughout the building. The apartment boasts a bright and airy atmosphere, enhanced by its thoughtful layout. As you enter, there is a spacious entrance hallway with storage space, a separate living room that provides a comfortable space for relaxation and entertaining, alongside a well-equipped kitchen. There is also two bedrooms and the bathroom suite. This property also features underground parking, offering peace of mind for residents with vehicles. With its prime location, modern conveniences, and inviting living spaces, this apartment presents an excellent opportunity for both first-time buyers and those looking to downsize. Do not miss the chance to make this delightful apartment your new home in Ware.

Ware is located off the A10, with the popular town of Hertford just 3 miles up the road. The town is one of the areas most popular and you really do have the best of both worlds, surrounded by the beautiful Hertfordshire countryside, but well connected to London. If you are a commuter or just like to have regular day trips to London you are just 20 miles away by car and with very easy access by Ware train station to London Liverpool Street (approx. 45 mins) or if you prefer from Hertford East station to Liverpool street (approx. 49 mins) or Hertford North Finsbury Park/Kings Cross (approx. 35 mins).



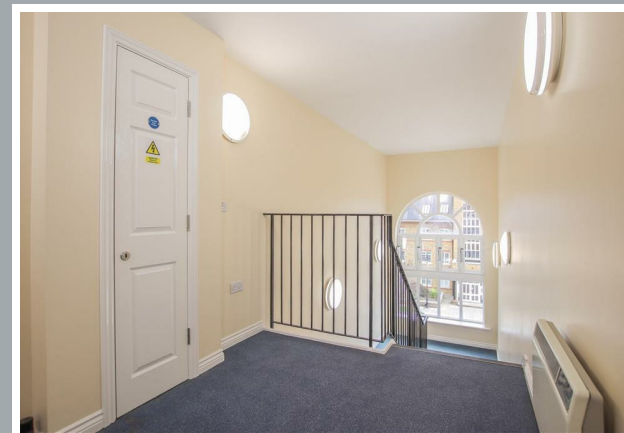
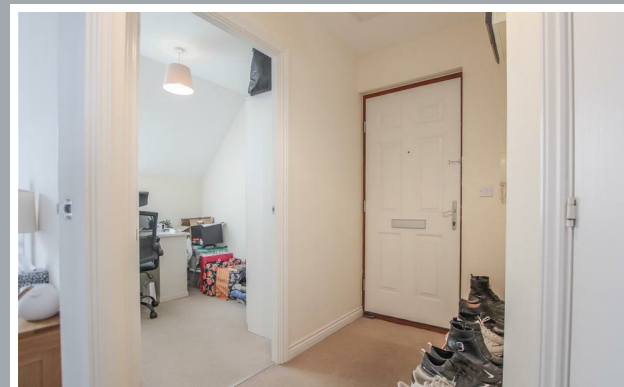


70 Fore Street, Hertford, Hertfordshire, SG14 1BY





70 Fore Street, Hertford, Hertfordshire, SG14 1BY



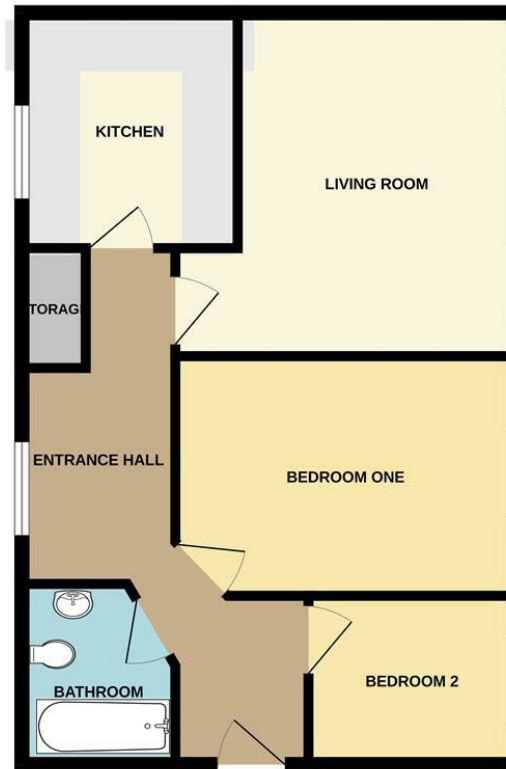
70 Fore Street, Hertford, Hertfordshire, SG14 1BY





70 Fore Street, Hertford, Hertfordshire, SG14 1BY

GROUND FLOOR  
562 sq.ft. (52.2 sq.m.) approx.



TOTAL FLOOR AREA: 562 sq.ft. (52.2 sq.m.) approx.

Whilst every attempt has been made to ensure the accuracy of the floorplan contained here, measurements of doors, windows, rooms and any other items are approximate and no responsibility is taken for any error, omission or mis-statement. This plan is for illustrative purposes only and should be used as such by any prospective purchaser. The services, systems and appliances shown have not been tested and no guarantee as to their operability or efficiency can be given.  
Made with Metropix ©2025

These particulars, whilst believed to be accurate are set out as a general outline only for guidance and do not constitute any part of an offer or contract. Intending purchasers should not rely on them as statements of representation of fact, but must satisfy themselves by inspection or otherwise as to their accuracy. No person in this firm's employment has the authority to make or give any representation or warranty in respect of the property.



stevenoates.com