



Price
£500,000

Freehold

3x  1x  1x 

**Brambletye Park Road,
Redhill, Surrey, RH1**

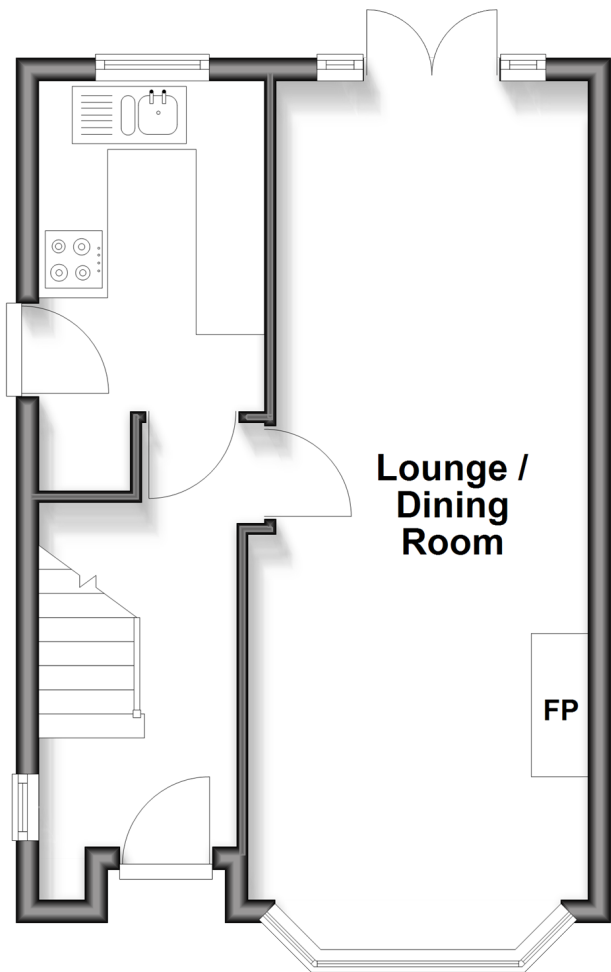
OVER 60?

Secure this property
for up to **59% less!**

cubitt & west
Helping you move forwards

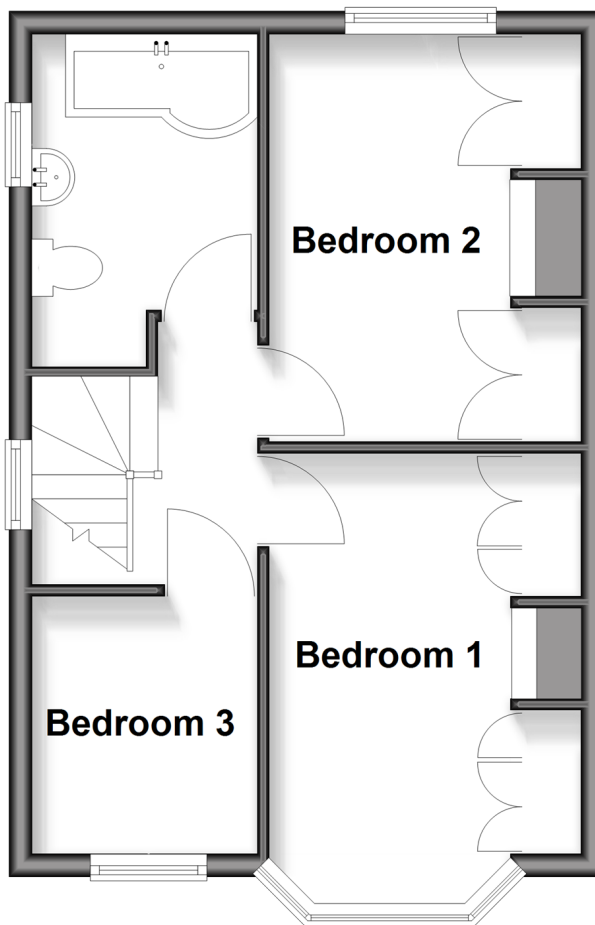
Ground Floor

Approx. 34.1 sq. metres (367.3 sq. feet)



First Floor

Approx. 34.7 sq. metres (373.7 sq. feet)



Accommodation

GROUND FLOOR

Entrance Hall

Kitchen: 9'0 x 6'5 (2.75m x 1.96m)

Lounge/Dining Area: 25'2 x 9'9 (7.68m x 2.97m)

FIRST FLOOR

Landing

Bedroom 1: 13'2 x 9'3 (4.02m x 2.82m)

Bedroom 2: 11'11 x 9'11 (3.63m x 3.02m)

Bedroom 3: 7'3 x 6'5 (2.21m x 1.96m)

Bathroom

OUTSIDE

Driveway

Rear Garden



Main features

- Well presented home in the heart of Earlswood
- Scope to extend subject to planning
- Beautiful bay windows flood the living room with natural light
- Direct access from kitchen and dining area to rear garden
- Ample driveway space with side access
- Large rear garden with vegetable patch

Nearest Schools

Primary Schools: Earlswood Junior 0.2 miles, Earlswood Infant and Nursery 0.4 miles, St John's Primary 0.4 miles, Redhill 1.0 miles
Secondary Schools: Dunottar School 0.7 miles, Carrington 1.0 miles, Reigate School 1.1 miles

Transport Information

Train Stations: Earlswood 0.1 miles, Redhill 0.8 miles, Nutfield 1.4 miles

Address

Brambletye Park Road, Redhill, Surrey, RH1

Directions

For directions to this property please contact us.



cubitt&west
Helping you move forwards

Call Redhill Branch 01737 778866 ■ cubittandwest.co.uk



- Legal advice should be taken to verify fixtures/fittings, planning, alterations and/or lease details
- Appliances & services are untested, dimensions are approximate and floor plans are not to scale
- Through a Homewise Home For Life Plan people aged 60+ can secure this property for up to 59% less, by purchasing a Lifetime Lease

EPC RATING	CURRENT:	POTENTIAL:
	E(54)	B(31)

23411693/20260313/AB/JB2