

506 Meadow Mill, Water Street, Stockport, SK1 2AP

£1,200 Per Month

Council Tax Band: B



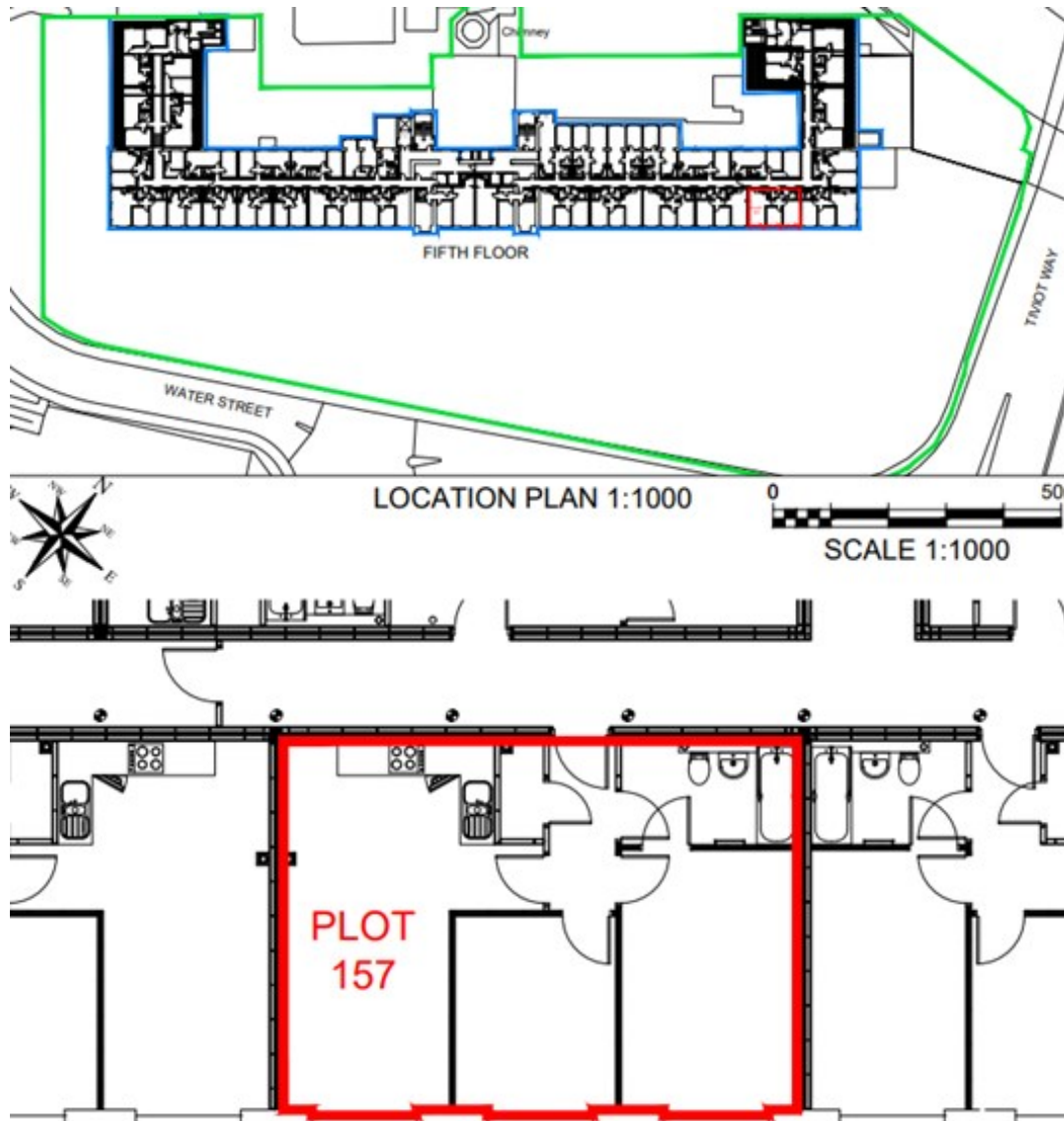
ORLANDO REID



This brand-new, two double-bedroom apartment is located on the 5th floor of the newly developed mill conversion, Meadow Mill. One of the rare units to include secure off-road parking, this property is ready to move into and is offered on an unfurnished basis.

Meadow Mill is a unique development featuring 213 apartments that blend original mill features with contemporary finishes. The apartment comprises two spacious double bedrooms, a three-piece bathroom suite with a shower over the bath, and an open-plan kitchen and living area.

The property is ideally situated in front of Reddish Vale Country Park, offering scenic surroundings, and provides easy access to Manchester's outer ring road. For added convenience, a Tesco superstore and other amenities are located right next door.



ORLANDO REID

St Johns Court 19b Quay Street, Manchester, M3 3HN

01616760099

manchester@orlandoreid.co.uk

<https://www.orlandoreid.co.uk/manchester/>

| Energy Efficiency Rating | | Current | Potential |
|--|--|-------------------------|-----------|
| <i>Very energy efficient - lower running costs</i> | | | |
| (92 plus) A | | | |
| (81-91) B | | | |
| (69-80) C | | | |
| (55-68) D | | | |
| (39-54) E | | | |
| (21-38) F | | | |
| (1-20) G | | | |
| <i>Not energy efficient - higher running costs</i> | | | |
| England & Wales | | EU Directive 2002/91/EC | |