

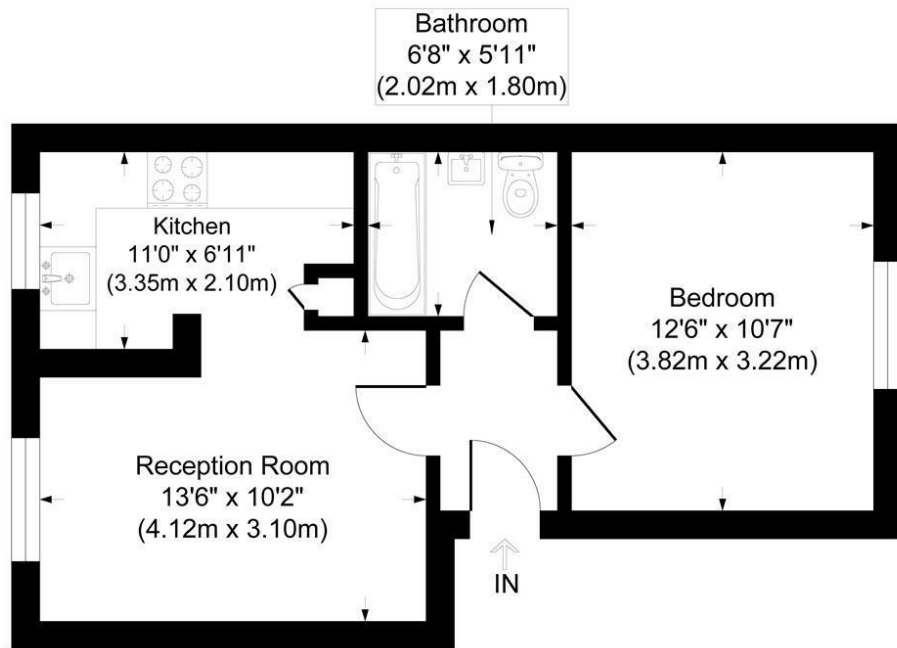
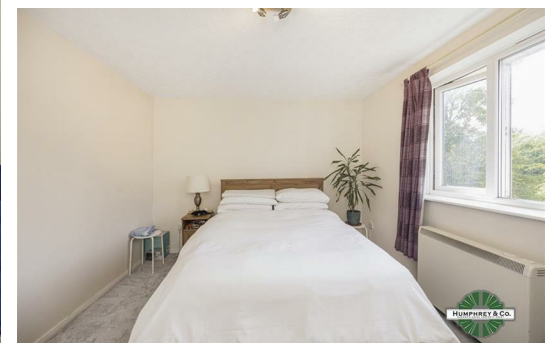


Greenacre Gardens

Approximate Gross Internal Area
Total = 38.8 sq m / 418 sq ft

This plan is for layout guidance only. Not drawn to scale unless stated. Windows and door openings are approximate. Whilst every care is taken in the preparation of this plan, please check all dimensions, shapes and compass bearings before making any decisions reliant upon them.

powered by:
THE360IMAGE
www.the360image.co.uk



Second Floor

Directions

Contact

125 Hoe Street
London
E17 4RX

E: lettings@hcolondon.com

T: 02085 210 755

hcolondon.com



1 Bed
Flat
located in



52 Greenacre Gardens

London
E17 0EV

£1,450 Per Month



AVAILBE 15TH OCTOBER— DOUBLE BEDROOM— SECOND FLOOR— PARKING SPACE— PART FURNISHED— 0.2 MILES FROM WOOD STREET STATION

Nestled in the desirable Greenacre Gardens, this charming flat offers a delightful living experience in the heart of London. Spanning 420 square feet, the property is perfectly suited for individuals or couples seeking a convenient urban lifestyle. The flat boasts a well-proportioned reception room that creates a welcoming atmosphere, ideal for both relaxation and entertaining guests.

The spacious double bedroom is filled with natural light, providing a serene retreat at the end of a busy day. The well-appointed bathroom caters to all your daily needs, ensuring comfort and functionality.

Its prime location is a mere 0.1 miles from Wood Street Station, providing excellent transport links that make commuting to central London and beyond a breeze.

The surrounding area is rich with local amenities, including shops, cafes, and parks, ensuring that everything you need is within easy reach, combining appealing features with a fantastic location. With its inviting atmosphere and practical layout, this property is sure to attract considerable interest.



| Energy Efficiency Rating | | Current | Potential |
|---|--|-------------------------|-----------|
| Very energy efficient - lower running costs | | | |
| (92 plus) A | | | |
| (81-91) B | | | |
| (69-80) C | | | |
| (55-68) D | | | |
| (39-54) E | | | |
| (21-38) F | | | |
| (1-20) G | | | |
| Not energy efficient - higher running costs | | | |
| England & Wales | | EU Directive 2002/91/EC | |

