



Logan Place  
Kensington, W8

CHESTERTONS





An exceptional lateral apartment with direct lift access set within a handsome red brick building. The property comprises three double bedrooms, three ensuite bathrooms, a large double reception and a west facing terrace.

The property is set on a quiet street in Kensington, W8 and is situated on the buildings second floor. The apartment and building has been finished to an exacting standard throughout and was completed in 2016.

Further additional benefits include beautiful solid wood flooring, ample built-in storage, guest w/c, and comfort cooling throughout.

There is a storage unit within the building that is available by separate negotiation, as well as a one bedroom annex flat.

- Three double bedrooms with ensuite bathrooms
- Direct lift access
- West facing terrace
- Utility room
- Comfort cooling throughout
- Storage unit and annex flat available by separate

Offers in excess of  
£3,250,000

Energy Efficiency Rating		Current	Potential
90-100	A		
81-90	B		
69-81	C	81	81
55-69	D		
39-55	E		
21-39	F		
1-21	G		

Not energy efficient - higher running costs

England, Scotland & Wales EU Directive 2002/91/EC

**Tenure:** Leasehold 994 years remaining

**Service Charge:** £17,322 per annum

**Ground Rent:** £4,000 per annum

**Local Authority:** Royal Borough of Kensington & Chelsea

**Council Tax Band:** H

**Chestertons Kensington Sales**

116 Kensington High Street

London

W8 7RW

kensington@chestertons.co.uk

020 7937 7244

chestertons.co.uk

# Logan Place, W8

Approximate Gross Internal Area  
186.00 SQ.M / 2002 SQ.FT  
(EXCLUDING LIFT)  
LIFT 2.00 SQ.M / 22 SQ.FT  
INCLUSIVE TOTAL AREA 188.00 SQ.M / 2024 SQ.FT  
(INCLUDING STORAGE)  
STORAGE 3.21 SQ.M / 35 SQ.FT  
EXCLUSIVE TOTAL AREA 182.79 SQ.M / 1968 SQ.FT



Rectangular Snip

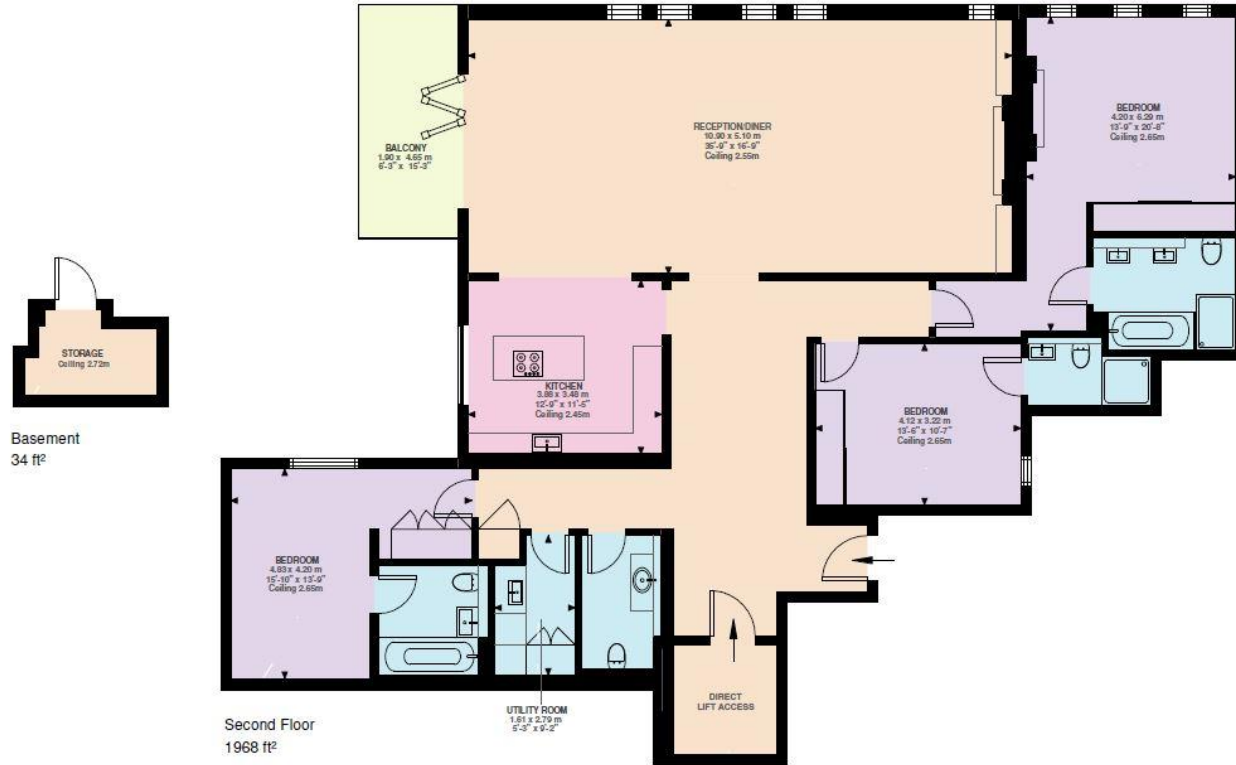


Illustration for identification purposes only. Not to scale.  
Floor Plan Drawn According To RICS Guidelines.

Chesterton UK Services Limited trading as Chestertons for themselves and for the vendor of this property whose agents they are, give notice that (i) these particulars do not constitute any part of an offer or contract, (ii) all statements contained within these particulars are made without responsibility on the part of Chestertons or the vendor, (iii) whilst made in good faith, none of the statements contained within these particulars are to be relied upon as a statement or representation of fact, (iv) any intending purchasers must satisfy themselves by inspection or otherwise as to the correctness of each of the statements contained within these particulars, (v) the vendor does not make or give either Chestertons or any person in their employment any authority to make or give representation or warranty whatsoever in relation to this property. Wide angle lenses may be used. ©Copyright Chestertons | Chesterton UK Services Limited | Registered Office 5th Floor, The Lantern, 75 Hampstead Road, London, NW1 2PL Registered Company Number 05334580.



This paper is 100% recyclable