



## Elms Road, South Knighton

In Excess of £475,000 Freehold

Spacious four-bedroom detached home in South Knighton, offering three reception rooms, period features, and a rear garden, positioned within a popular and well-established residential location.



0116 274 5544







### **Entrance Hall**

With stairs to the first-floor landing and original style tiled flooring.



### **Reception Room One**

16' 7" x 12' 0" (5.06m x 3.67m)

Includes plenty of natural light from a glazed bay window to the front elevation, a living flame gas fire with marble surround and hearth, coving to the ceiling, picture rail, television point, and a radiator.

### **Reception Room Two**

14' 10" x 12' 0" (4.51m x 3.66m)

Features natural light through a glazed bay window to the front elevation, a chimney breast with a feature fireplace, coving to the ceiling, picture rail, and a radiator.



### **Reception Room Three / Dining Room**

12' 0" x 12' 11" (3.66m x 3.94m)

Features natural light through a glazed bay window to the rear elevation, ceramic tiled flooring, shelving, and a radiator.



### **Kitchen**

8' 11" x 7' 3" (2.72m x 2.20m)

Features natural light through a double-glazed window to the rear elevation. Includes high-gloss base and wall units, quartz-effect work surfaces, stainless steel sink with drainer and mixer tap. Appliances include an inset four-ring ceramic hob, oven, and extraction hood. Contains a wall-mounted boiler and access to a WC.

### **WC**

7' 1" x 6' 3" (2.17m x 1.91m)

Features a glazed window to the rear elevation, low-level WC, wash hand basin, and tiled flooring.

### **Bedroom One**

13' 6" x 12' 0" (4.11m x 3.66m)

Features a glazed window to the front elevation, a chimney breast with a feature fireplace (surround and tiled hearth), a picture rail, and a radiator.

### **Bedroom Two**

12' 7" x 12' 0" (3.84m x 3.67m)

Features a glazed window to the front elevation, a chimney breast with a feature fireplace, a built-in cupboard, and a radiator.













### **Bedroom Three**

12' 2" x 10' 2" (3.72m x 3.11m)

Features a glazed window to the rear elevation, a feature fireplace, a picture rail, and a radiator.

### **Bedroom Four**

9' 2" x 8' 3" (2.79m x 2.52m)

Features a glazed sash window to the rear elevation and a radiator.

### **Bathroom**

7' 5" x 6' 5" (2.25m x 1.96m)

Features a glazed sash window to the rear elevation, a bath with a shower over, a wash-hand basin, a bidet, and tiled splashbacks.

### **WC**

Glazed window to rear elevation and low-level WC.

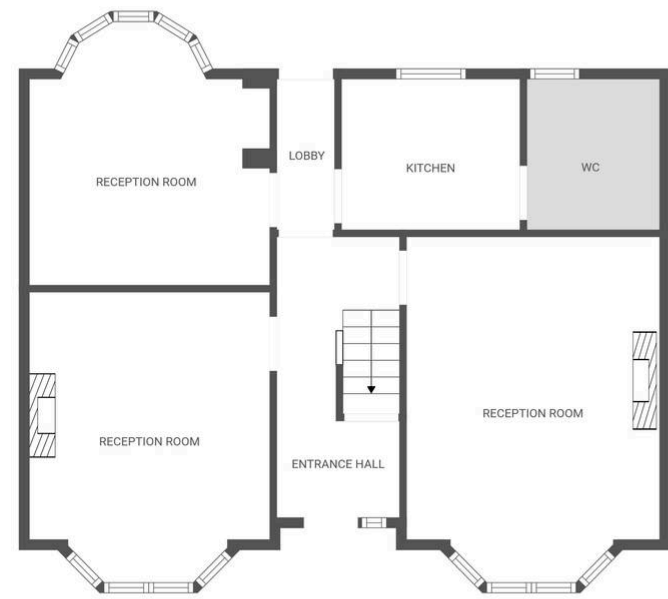
### **Front Garden**

Pathway providing access to the front door.

### **Rear Garden**

Paved patio seating area leading to a well-maintained lawn, mature flower beds, and established borders.





Ground floor



1st floor

FLOOR PLAN CREATED BY CUBICASA APP. MEASUREMENTS DEEMED HIGHLY RELIABLE BUT NOT GUARANTEED.





The property is well located for everyday amenities and services, including local public and private schooling including Overdale Infant and Junior Schools and nursery day-care, Leicester City Centre and the University of Leicester, Leicester Royal Infirmary and Leicester General Hospital. The property is located close to Knighton Park and Queens Road shopping parade in neighbouring Clarendon Park with its specialist shops, bars, boutiques and restaurants.

Council Tax band: E

Tenure: Freehold

EPC Energy Efficiency Rating: E

**We'll keep you moving...**



We must inform all prospective purchasers that the measurements are taken by an electronic take and are provided as a guide only and they should not be used as accurate measurements. We have not tested any mains services, gas or electric appliances, or fixtures and fittings mentioned in these details, therefore, prospective purchasers should satisfy themselves before committing to purchase. Intending purchasers must satisfy themselves by inspection or otherwise to the correctness of the statements contained in these particulars. Knightsbridge Estate Agents (nor any person in their employment) has any authority to make any representation or warranty in relation to the property. The floor plans are not to scale, and are intended for use as a guide to the layout of the property only. They should not be used for any other purpose. We are required by law to conduct anti-money laundering checks on all those selling or buying a property. Whilst we retain responsibility for ensuring checks and any ongoing monitoring are carried out correctly, the initial checks are carried out on our behalf by Lifetime Legal who will contact you once you have agreed to instruct us in your sale or had an offer accepted on a property you wish to buy. The cost of these checks is £60 (incl. VAT), which covers the cost of obtaining relevant data and any manual checks and monitoring which might be required. This fee will need to be paid by you in advance of us publishing your property (in the case of a vendor) or issuing a memorandum of sale (in the case of a buyer), directly to Lifetime Legal, and is non-refundable. We will receive some of the fee taken by Lifetime Legal to compensate for its role in the provision of these checks.