



Plot 3 Silver Street  
Gastard

GOODMAN WARREN BECK

# Plot 3 Silver Street, Gastard, SN13 9PG

GOODMAN WARREN BECK

64 Market Place  
 Chippenham, Wiltshire SN15 3HG  
 Tel 01249 444449 | Fax 01249 448989  
 Email info@goodmanwb.co.uk

Price Guide £800,000

The Martin's Yard is an impressive development comprising of six, four bedroom homes set in the tranquil village of Gastard, located south of the historic market town of Corsham in Wiltshire. The six new homes are set in spacious plots offering open living and entertaining space, and landscaped gardens overlooking neighbouring farmland. The properties are constructed of a natural Bath stone with reconstructed stone features, remaining in keeping with period properties located in the village. The windows are finished in a pebble grey colour with clay roof tiles. All six homes are detached, with plots one and two boasting double garages, and plots 3-6 boasting single garages. All plots have additional parking for two vehicles, and there are two visitor spaces.

The development is anticipated for completion in 2026.

## Situation

The Martin's Yard development (SN13 9PG) is located off of Silver Street, leading into Gastard from the Corsham direction.

The development is located close to the centre of Gastard village which boasts amenities including a vehicle repair and servicing workshop, a locally-renowned pub, and a playing field. The neighbouring historic market town of Corsham is located a short four minute drive north. Corsham is located at the southwestern edge of The Cotswolds, offering a range of amenities including multiple primary schools, a secondary school, local shops, dentists, a doctors' surgery, and historic landmarks including Corsham Court.

The Martin's Yard development is in a great location, with the city of Bath located a 25 minute drive away, and the picturesque town of Bradford On Avon just eight miles south-west of the development. In terms of transport links, the A4 linking Bristol to Central London is located just 2.2 miles north of the development. The nearest train station is Chippenham, which is located 5.3 miles away and lies along the London Paddington to Bristol Temple Meads line. There are multiple bus stops in the village of Gastard, which travel to Melksham, Corsham and Trowbridge.

## Specification

Each of the properties at the Martin's Yard development benefit from:

- ASHP heating
- Under floor heating to ground floor
- Fully fitted kitchen

- Fitted Neff appliances to include: oven, hob, extractor, dishwasher and fridge freezer
- Downlights to primary rooms
- Duravit sanitary ware
- Duravit & Vado brassware
- Laminate flooring to the Kitchen/Dining/Family Room, Hall and Cloakroom
- Tiled bathroom and en-suite with electric underfloor heating to floors
- Varying allocated parking spaces and garage facilities, depending upon the property type.

## Ground Floor

- Living/Dining/Kitchen 29'6" (9.00m) x 12'2" (3.71m)
- Living room 16'0" (4.87m) x 13'9" (4.18m)
- Cloakroom
- Utility Room
- Garage 19'9" (6.02m) x 9'11" (3.02m)

## First Floor

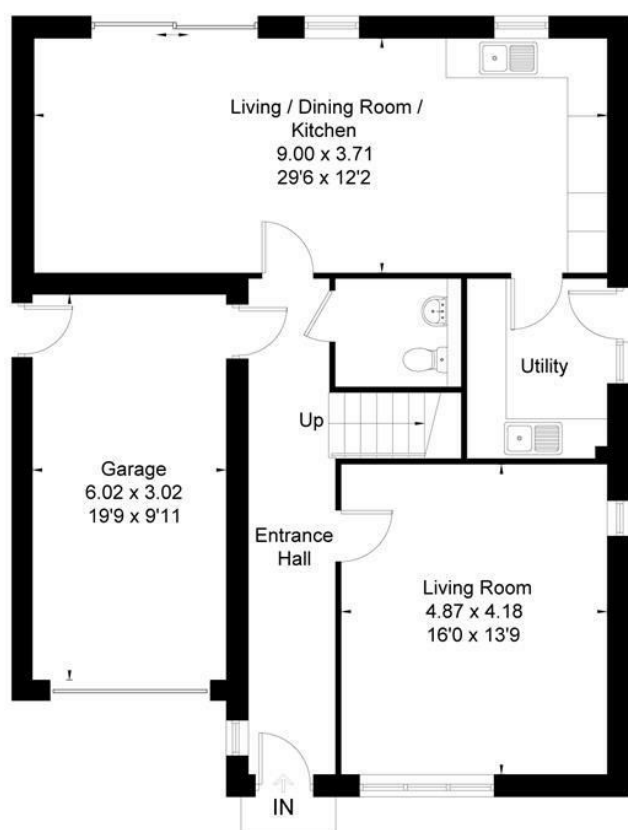
- Bedroom One 13'10" (4.22m) x 10'10" (3.29m)
- Ensuite
- Dressing Room
- Bedroom Two 18'6" (5.65m) x 15'11" (4.85m)
- Ensuite
- Bedroom Three 13'10" (4.22m) x 12'0" (3.65m)
- Bedroom Four 12'0" (3.66m) x 10'9" (3.28m)
- Bathroom

## Agents Note

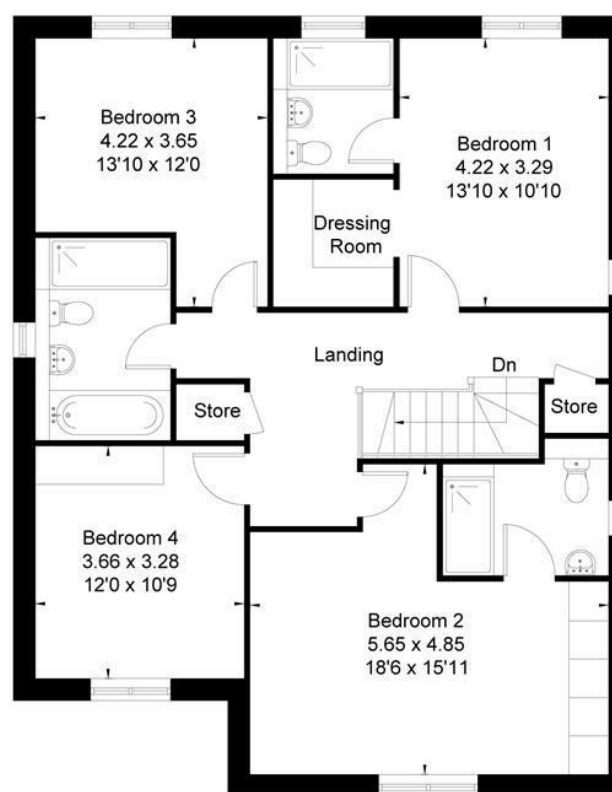
\*\* Specific Computer site plans give potter house typ Marketing purposes



Plot 3



Ground Floor



First Floor



This floor plan has been drawn in accordance with RICS Property Measurement 2nd edition. All measurements, including the floor area, are approximate and for illustrative purposes only. @fourwalls-group.com #81696