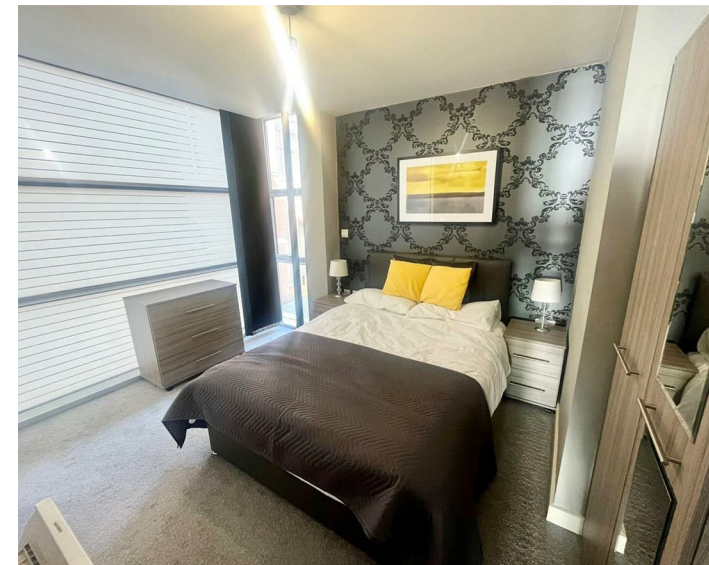
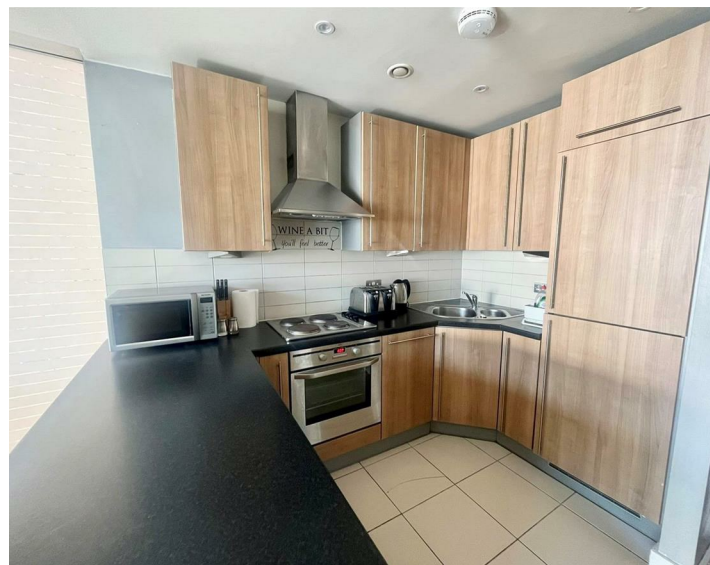
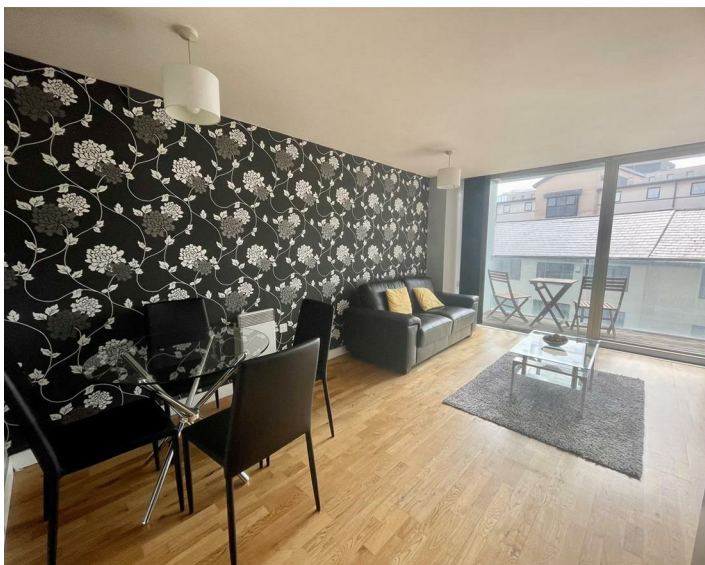




Apt 7 Eden Square, Liverpool, L2 2DQ
£1,050 PCM

www.cityresidential.co.uk



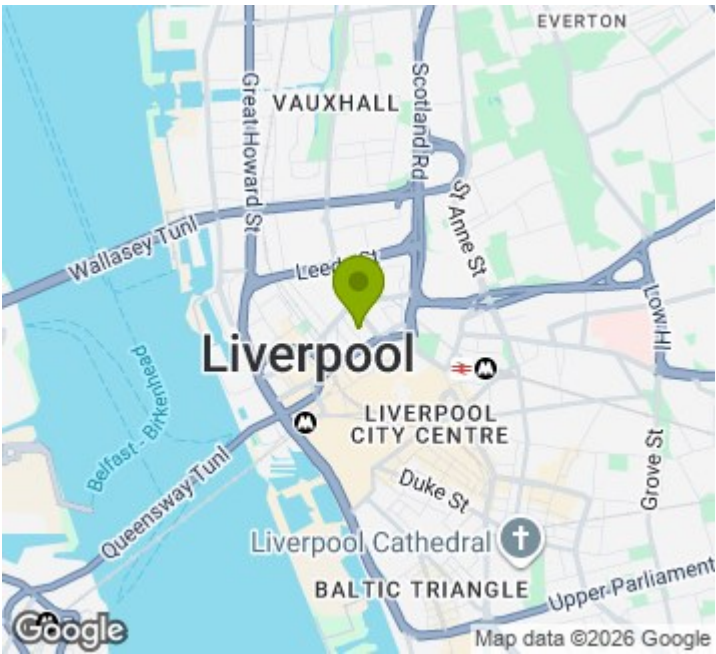
About the Property

We are delighted to offer for Let, this well maintained two bedroom apartment in the sought after and highly regarded Eden Square development.

The property briefly comprises: entrance hall, open plan living/dining room with modern fitted kitchen, master bedroom, second bedroom and family bathroom to complete the accommodation. The property also benefits from a timber decked balcony.

This development is serviced by a lift to all floors. A secure parking space is also included in the rental figure.

EPC Rating - E. Council Tax Band - C. A deposit amount of £1,211.00 is payable upon moving in. Call us now on 0151 231 6100 to arrange a viewing.



Energy Efficiency Rating

	Current	Potential
Very energy efficient - lower running costs		
(92 plus) A		
(81-91) B		
(69-80) C		
(55-68) D		
(39-54) E		
(21-38) F		
(1-20) G		
Not energy efficient - higher running costs		
England & Wales	EU Directive 2002/91/EC	



City Residential
81/87 Victoria Street, The Old Haymarket, Liverpool L1 6DG
T: 0151 231 6100 F: 0151 231 6105
E: sales@cityresidential.co.uk



► WWW. **cityresidential** .co.uk ◀