



ALBERT BRIDGE ROAD, SW11

£3,150 per month

One-bedroom apartment
Mansion Block
Views of Battersea Park
Moments walk from Chelsea
Great local amenities

@marshandparsons
marshandparsons.co.uk

MARSH &
PARSONS



ABOUT THE PROPERTY

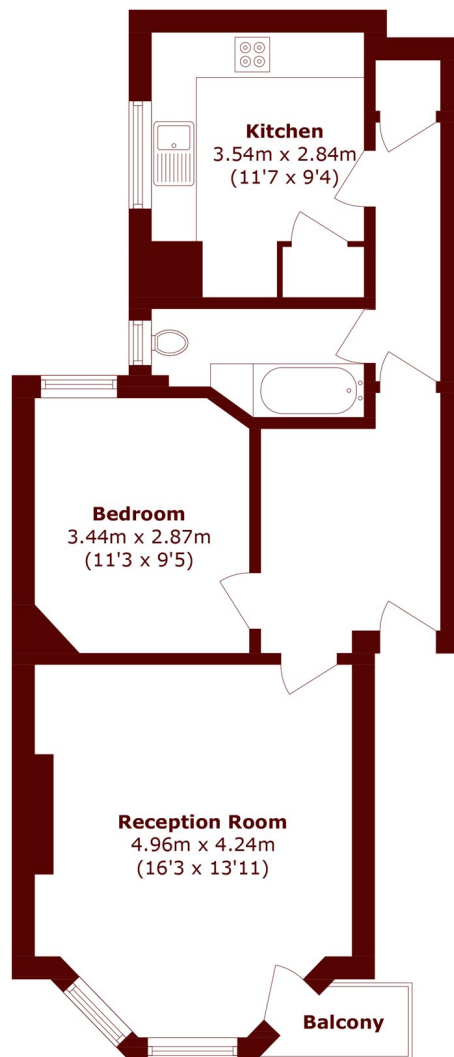
Minimum term 4 months:

A beautifully presented one-bedroom apartment set within a well-maintained development, offering an excellent balance of modern living and well-considered space, ideally suited to a professional tenant or couple. The property features a bright and spacious open-plan reception area, flooded with natural light through large windows, seamlessly flowing into a well-appointed kitchen complete with integrated appliances and generous storage. The double bedroom is well-proportioned and provides a calm and comfortable retreat, while the contemporary bathroom is finished to a high standard with sleek, modern fittings.



STEP INSIDE

ALBERT BRIDGE ROAD



Total area (approx.): 56.5 sq. m (608.2 sq. ft)
Balcony Total (approx.): 1.4 sq. m (15.1 sq. ft)

Battersea
020 7228 9292

Energy Rating: C We aim to make our particulars both accurate and reliable. However, they are not guaranteed; nor do they form part of an offer or contract. If you require clarification on any points then please contact us, especially if you're traveling some distance to view. Please note that appliances and heating systems have not been tested and therefore no warranties can be given as to their good working order

**MARSH &
PARSONS**