

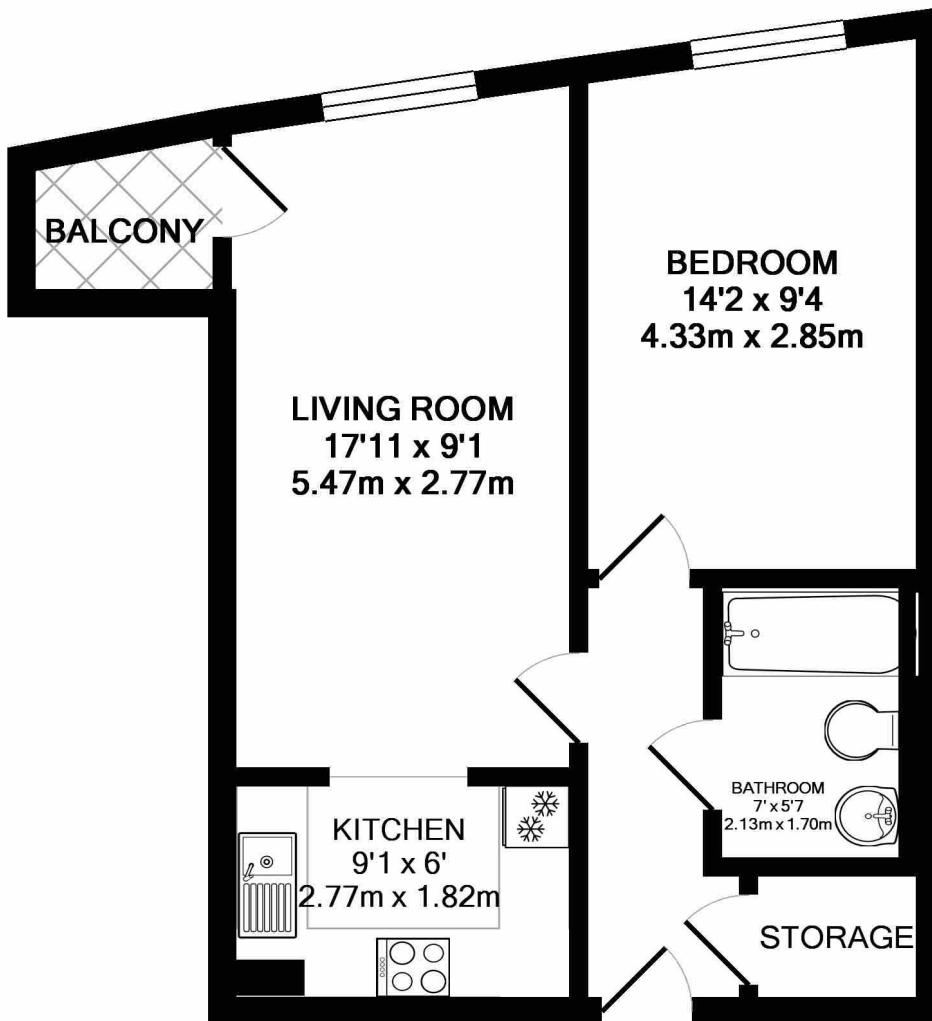


INDESCON SQUARE, E14

£325,000

**** Offers Over £325,000**** This modern, recently refurbished, 6th floor apartment with a private balcony is in the Indecon Square development! The accommodation comprises of a well-appointed living / dining area benefitting from wood-flooring and large windows, luxury kitchen area fully equipped for modern day living, double bedroom and a tiled bathroom.

- 24h Concierge Service
- Communal Landscape Gardens
Service Charge £4,079



TOTAL APPROX. FLOOR AREA 463 SQ FT. (43 SQ.M.)

Whilst every attempt has been made to ensure the accuracy of the floor plan contained here, measurements of doors, windows, rooms and any other items are approximate and no responsibility is taken for any error, omission, or mis-statement. This plan is for illustrative purposes only and should be used as such by any prospective purchaser. The services, systems and appliances shown have not been tested and no guarantee as to their operability or efficiency can be given

Made with Metropix ©2018

LiFE RESIDENTIAL

36 Millharbour, London, E14

9JS

Sales: 020 3668 1033

Lettings: 020 3668 1030

Energy Rating: B. We aim to make our particulars both accurate and reliable. However they are not guaranteed; nor do they form part of an offer or contract. If you require clarification on any points then please contact us, especially if you're traveling some distance to view. Please note that appliances and heating systems have not been tested and therefore no warranties can be given as to their good working order.