



Rose Park, New Haw, KT15

Offers Over £90,000

1 1 1



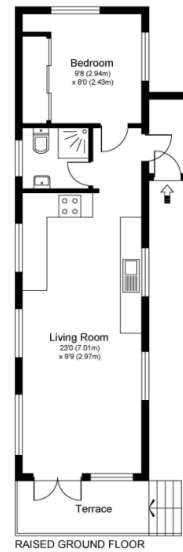
Set within the sought-after Rose Park development, managed by Berkeley Homes, this charming one-bedroom detached park home combines modern comforts with a tranquil riverside setting. Rose Park itself is beautifully landscaped, with three acres of meadows running alongside the River Bourne, while still being conveniently located close to Addlestone and New Haw.

Internally, the property has been well cared for and thoughtfully updated by the current owner. The home features a bright and welcoming living area with an open-plan kitchen and sitting room positioned at the front of the property. Facing south, this space opens directly onto a balcony terrace, making the most of the natural light throughout the day. The accommodation also includes a double bedroom with a built-in wardrobe, a practical entrance porch providing additional storage, and a shower room fitted with an easily accessible unit. A modern and reliable Worcester boiler further enhances the home's comfort.

Externally, the property enjoys a delightful private garden with its own shed, offering a peaceful space to relax. The wider setting of Row Town adds to the appeal, with a Co-Op, local shops, an Indian restaurant, a friendly village pub, and a popular garden centre all close by.

This home is a wonderful opportunity to enjoy village life in a serene parkland environment while remaining well connected to nearby towns.





- Sought-After Location
- Park Home For The Over 50s
- Double Bedroom With Built In Wardrobes
- Open Plan Kitchen / Living Room
- Gas Central Heating
- One Double Bedroom
- Shower Room

