



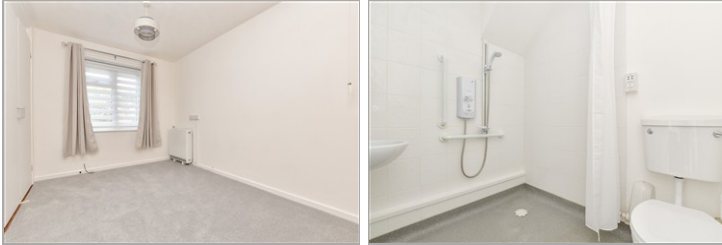
**Guide Price**  
**£150,000**

**Leasehold**

1x  1x  1x 

**Rowan Mead, Henbit  
Close, Tadworth, Surrey,  
KT20**

**cubitt & west**  
Helping you move forwards



## Main features

- Over 60's ground floor retirement apartment
- Shared ownership, 80% share available
- Direct access to private patio area
- Easy access to both Tattenham Corner and Tadworth Train Stations
- Chain Free

## Accommodation

### GROUND FLOOR

Entrance

Kitchen/Diner: 9'7 x 8'1 (2.92m x 2.47m)

Lounge: 17'6 x 11'4 (5.34m x 3.46m)

Bedroom : 12'9 up to fitted wardrobes x 8'4 (3.89m x 2.54m)

Wet Room

### OUTSIDE

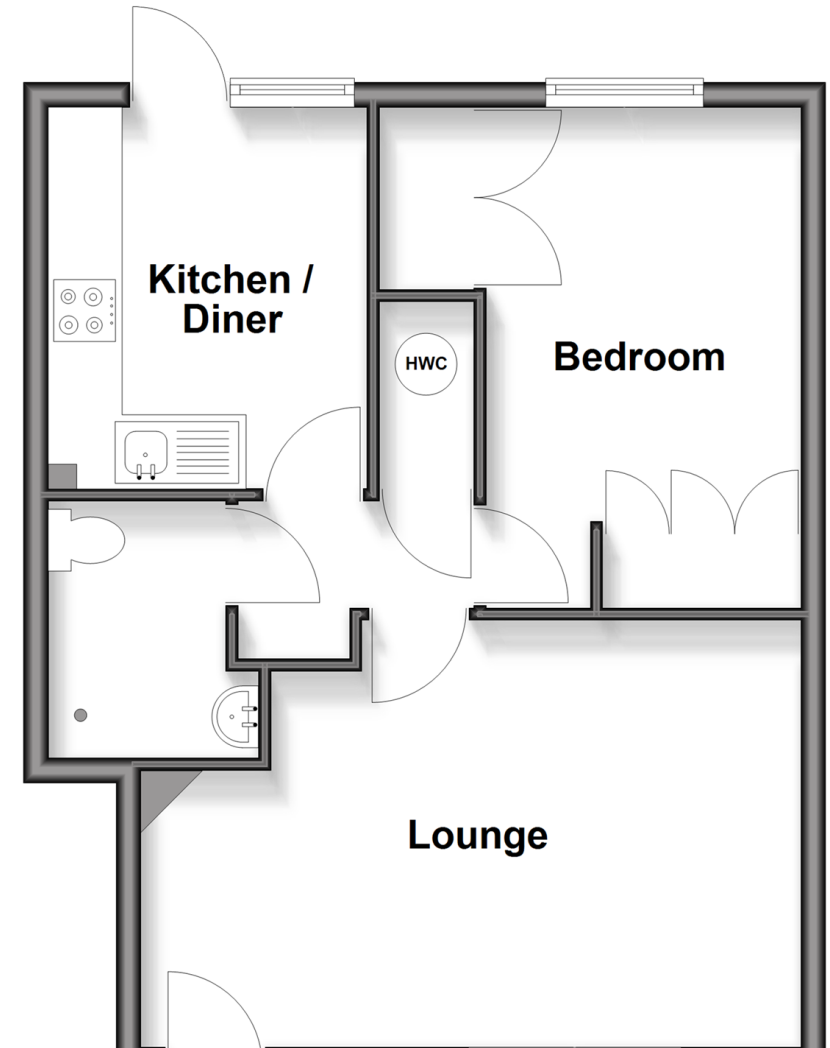
Patio

Communal Gardens

Communal Parking

## Ground Floor

Approx. 44.6 sq. metres (480.1 sq. feet)



**Call Banstead - 01737 352233 ■ [cubittandwest.co.uk](http://cubittandwest.co.uk)**

- Legal advice should be taken to verify fixtures/fittings, planning, alterations and/or lease details
- Appliances & services are untested, dimensions are approximate and floor plans are not to scale



20110227/20251124/SM/LE