



Kennington Lane, London, Greater London, SE11 5AQ

Guide Price **£550,000**

arley
property

Bedrooms: 1 | Bathrooms: 1 | Receptions: 1

- One double bedroom
- Private balcony
- London Skyline Views
- 24-hour concierge
- Excellent transport links
- Communal roof terrace
- No onward chain

A bright and spacious one-bedroom apartment within the award-winning Oval Village development by Berkeley Homes.

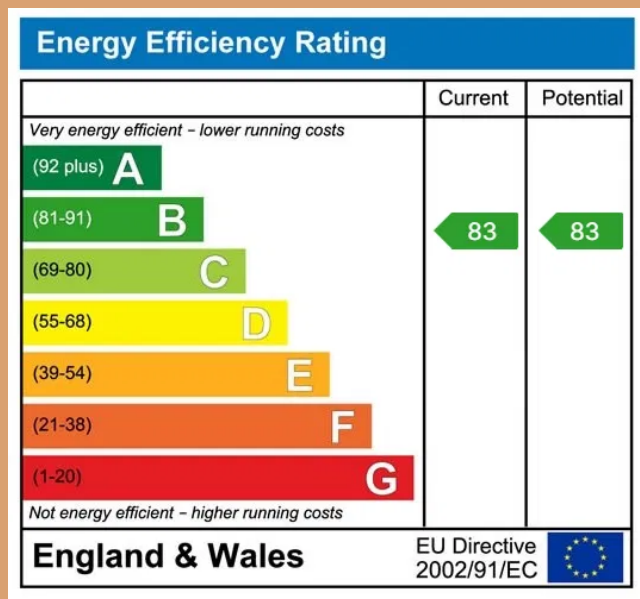
A bright and spacious one-bedroom apartment within the award-winning Oval Village development by Berkeley Homes. This elegant sixth-floor home extends to 541 sq. ft. It offers superb views across some of London's most iconic landmarks. The apartment is thoughtfully designed, with a generous open-plan kitchen and dining area. The fully integrated kitchen features stone worktops flowing seamlessly into the well-proportioned reception space. Floor-to-ceiling windows fill the apartment with natural light. A private balcony provides an ideal spot to take in the view. Additional features include comfort cooling and a utility cupboard.

Oval Village occupies a prime Zone 1 location, surrounded by green spaces and award-winning parks. It is less than a ten-minute walk from Oval, Vauxhall, and Kennington Underground stations. The development offers residents an exceptional lifestyle: 24-hour concierge, a well-equipped gym, a communal roof terrace, and private gardens. From 2026, additional facilities will include a luxury swimming pool with a vitality pool, spa treatment rooms, a private screening room, a residents' lounge, and a co-working space.

Oval Village sits next to the famous Oval Cricket Ground and is a short stroll from the River Thames. The area is surrounded by local shops, bars, and restaurants. This makes it one of Central London's most exciting new addresses.





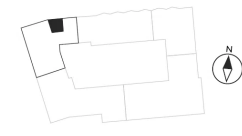


ONE BEDROOM APARTMENT

TYPE C



Apartment	4.1.5 / 4.2.6 / 4.3.6 / 4.4.6 / 4.5.5 / 4.6.5 / 4.7.5 / 4.8.5 / 4.9.5	
Level	1, 2, 3, 4, 5, 6, 7, 8 & 9	
Living / Kitchen / Dining	4.42 x 5.32m	14'5" x 17'4"
Bedroom	3.34 x 3.36m	10'9" x 11'0"
Total Internal Area	50 sq m	541 sq ft



KEY
W : Wardrobe

Layouts shown here are for approximate measurements only, they are not necessarily to scale. Exact layout and sizes of property may vary. All measurements may vary within a tolerance of 5%.

James Marshall
07515 448 385
James@arleyproperty.com

www.arleyproperty.com

arley
property