



Guide Price
£110,000

**Share of
Freehold**

1x  1x  1x 

**Leighton Mount, Victoria
Avenue, Shanklin, Isle of
Wight, PO37**

OVER 60?

Secure this property
for up to **59% less!**

Pittis 
Helping you move forwards



Main features

- First floor duplex apartment in sought after location
- Communal gardens and allocated parking
- Countryside and sea views
- Spacious and light accommodation
- Well presented throughout with character features

Accommodation

FIRST FLOOR

Entrance Hallway
Kitchen: 10'10 x 7'9 (3.30m x 2.36m)

SECOND FLOOR

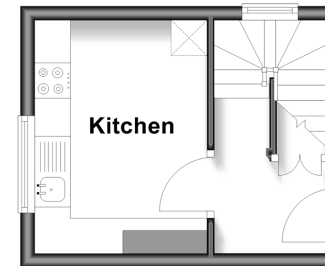
Landing
Bedroom: 10'7 x 10'5 (3.23m x 3.18m)
Lounge: 13'6 x 10'5 (4.12m x 3.18m)
Shower Room

OUTSIDE

Allocated Parking
Communal Gardens

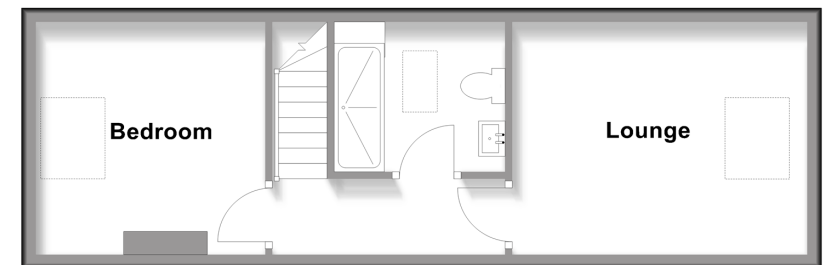
First Floor

Approx. 13.4 sq. metres (144.4 sq. feet)



Second Floor

Approx. 35.5 sq. metres (382.5 sq. feet)



Call Shanklin - 01983 868777 ■ pittis.co.uk

- Legal advice should be taken to verify fixtures/fittings, planning, alterations and/or lease details
- Through a Homewise Home For Life Plan people aged 60+ can secure this property for up to 59% less, by purchasing a Lifetime Lease

- Appliances & services are untested, dimensions are approximate and floor plans are not to scale



60620319/20260313/CP/CP