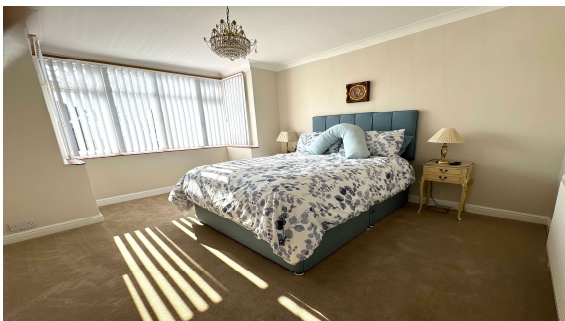




Homestead Road, Staines, TW18 2RD

£525,000 F/H

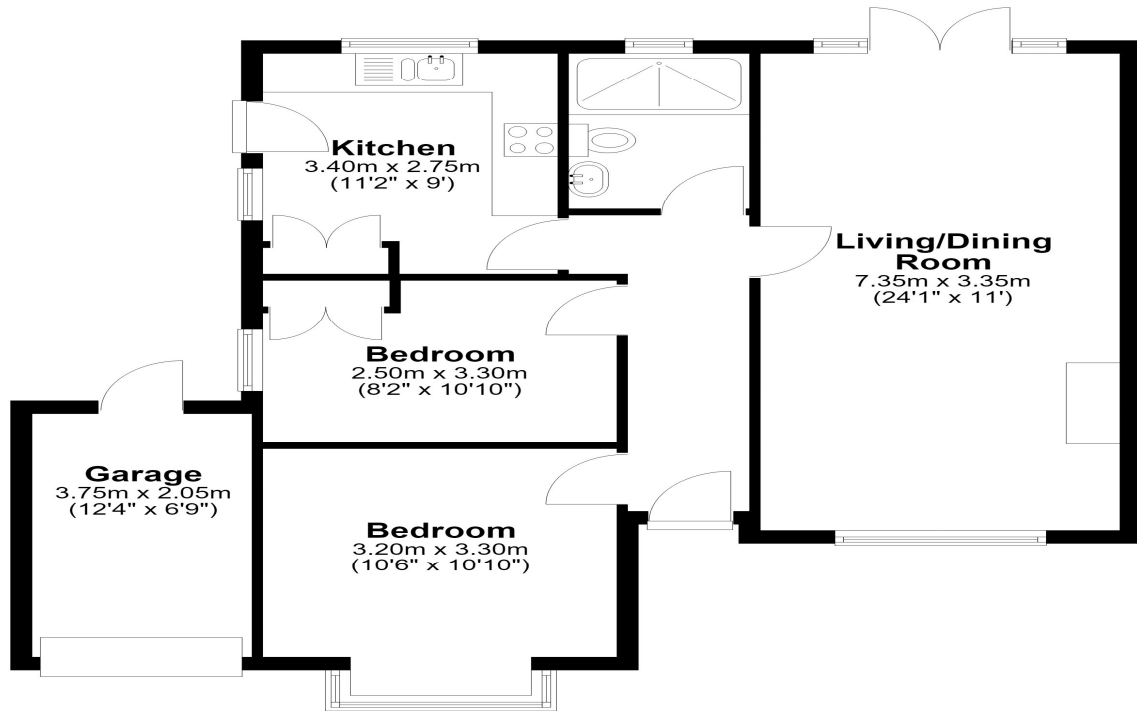


A well presented two bedroom detached bungalow, situated minutes from local shops and recreational park. This cared for home offers two spacious bedrooms, large lounge, modern kitchen and newly installed shower room, secluded 50ft (15.24m) rear garden and private drive to garage. Access to brand new leisure centre and mainline station is a five minute walk away. Road links to the A30/M25/A316 are also close at hand.

Homestead Road, Staines-upon-Thames, Middlesex, TW18 2RD

Ground Floor

Approx. 73.3 sq. metres (789.3 sq. feet)



Total area: approx. 73.3 sq. metres (789.3 sq. feet)

12 Homestead Road
STAINES-UPON-THAMES
TW18 2SD

Energy rating
D

Valid until
18 June 2036

Certificate number
9217-3063-8206-0016-7200

Property type
Detached bungalow

Total floor area
65 square metres

Rules on letting this property
Properties can be let if they have an energy rating from A to E.
You can read [guidance for landlords on the regulations and exemptions](#).

Energy rating and score
This property's energy rating is D. It has the potential to be C.
[See how to improve this property's energy efficiency.](#)

Score	Energy rating	Current	Potential
92+	A		
81-91	B		
69-80	C		
55-68	D	59 D	79 C
39-54	E		
21-38	F		
1-20	G		

The graph shows this property's current and potential energy rating.

COUNCIL TAX BAND:

E - Spelthorne Borough Council

VIEWINGS:

**By appointment with the clients selling agents,
Nevin & Wells Residential on 01784 437 437 or visit
www.nevinandwells.co.uk**



All measurements are approximate. Nevin & Wells Residential have not tested any systems or appliances.