



Randolph Avenue | Maida Vale | London | W9

Asking Price - £2,600 Per month

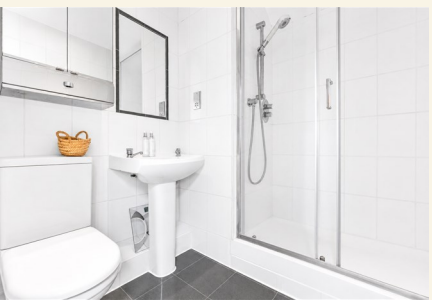
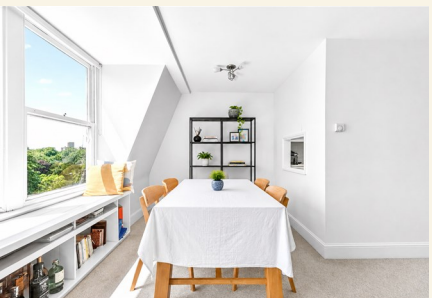
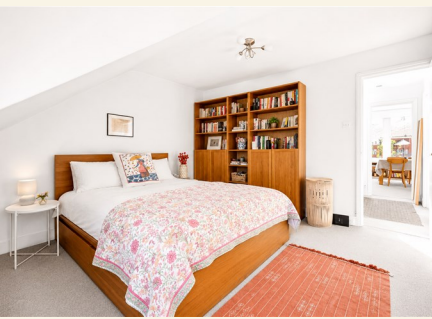


- Spacious 1-bedroom flat
- Charming period features
- Modern bathroom suite
- Bright reception room
- Prime Maida Vale location
- Close to local amenities
- Excellent transport links
- Top floor with natural light
- Views of Paddington Rec
- Near Little Venice cafes

A beautifully presented one bedroom top floor flat set within a well-maintained period building on Randolph Avenue, one of Maida Vale's most attractive and sought-after residential streets.

Positioned on the top floor, the flat enjoys an abundance of natural light, enhanced by large sash windows and bright, airy rooms. The reception room is well-proportioned and offers pleasant views towards Paddington Recreation Ground, creating a calm and open feel. The bedroom provides a comfortable retreat, while the bathroom is neatly arranged and practical for everyday living.



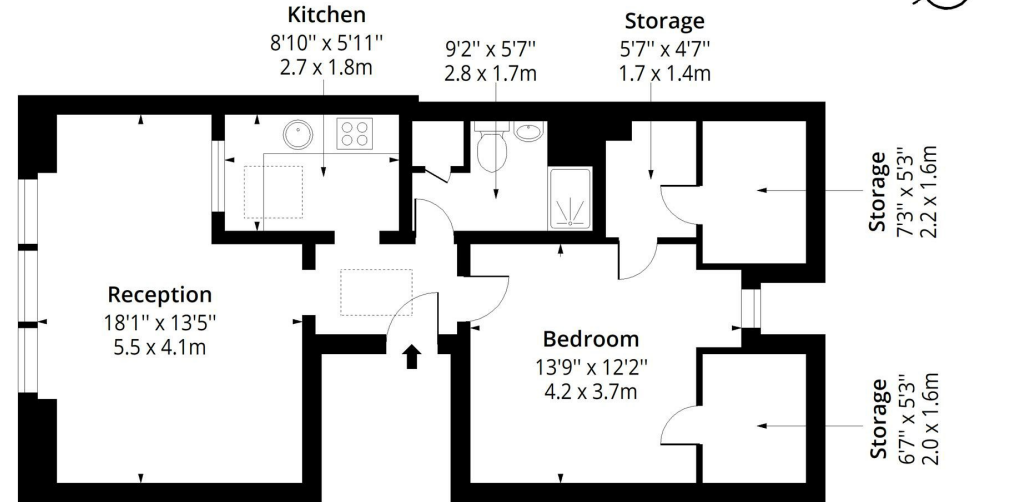


Randolph Avenue is superbly located for the best of Maida Vale and Little Venice. Maida Vale Underground Station, served by the Bakerloo Line, is only a short walk away, providing convenient access into central London. The cafés, restaurants and waterside charm of Little Venice are close by, along with the green open spaces and leisure facilities of Paddington Recreation Ground. Local shops, amenities and transport links are all within easy reach, making this a highly convenient yet peaceful place to live.



Randolph Avenue W9

Approx. Gross Internal Area 651 Sq Ft - 60.48 Sq M



Third Floor

Floor Area 651 Sq Ft - 60.48 Sq M



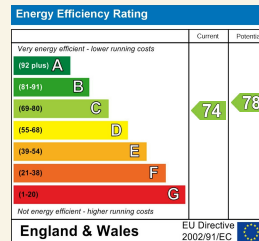
Measured according to RICS IPMS2. Floor plan is for illustrative purposes only and is not to scale. Every attempt has been made to ensure the accuracy of the floor plan shown, however all measurements, fixtures, fittings and data shown are an approximate interpretation for illustrative purposes only. 1 sq m = 10.76 sq feet.

lpaplus.com

Date: 27/5/2026



Council Tax Band **D** EPC Rating **C**



24 Bristol Gardens

London

W9 2JQ

hello@draperlondon.com

0203 143 1900