



Airedale Heights, Wakefield WF2 8YF

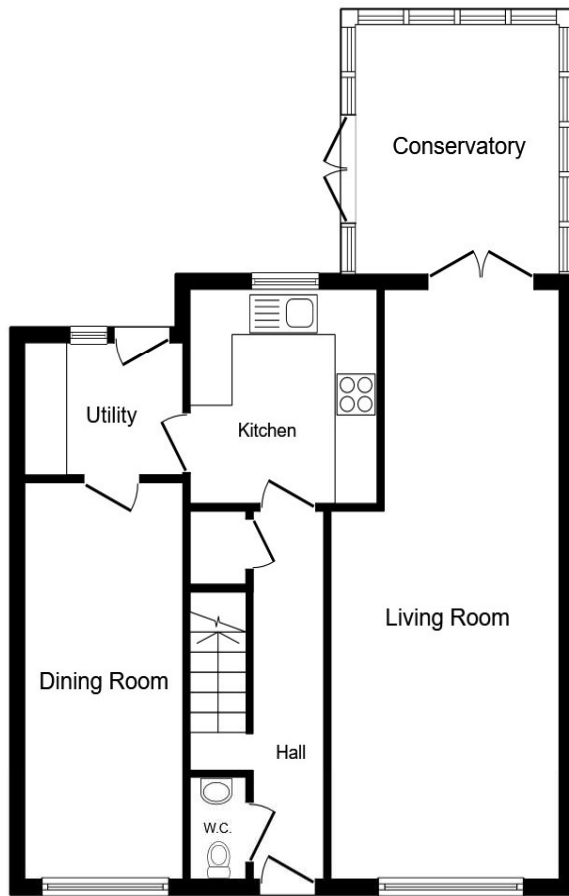


welcome to

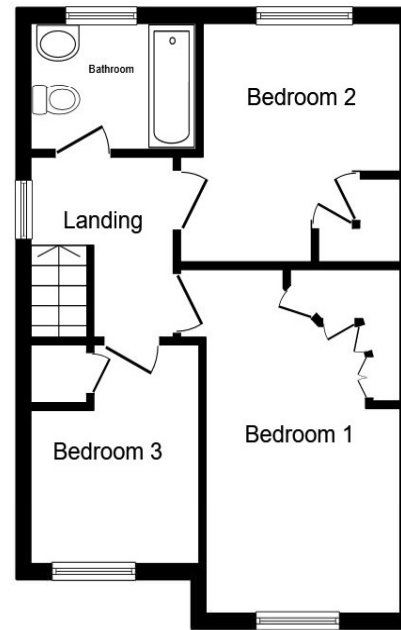
Airedale Heights, Wakefield

Fixed price £325,000. Welcome to the market this warm and welcoming 3 bedroom detached family home in the sought after location of Snapethorpe, Wakefield! This home is not to be missed! Viewings highly recommended to fully appreciate what this home has to offer.





Ground Floor



First Floor

Lounge

25' 9" max x 10' 9" max (7.85m max x 3.28m max)

Dining Room

7' 5" max x 17' 3" max (2.26m max x 5.26m max)

Kitchen

7' 2" max x 17' 3" max (2.18m max x 5.26m max)

Utility Room

5' 8" max x 7' 2" max (1.73m max x 2.18m max)

Conservatory

11' 7" max x 11' 2" max (3.53m max x 3.40m max)

Bedroom One

9' 1" max x 15' 4" max (2.77m max x 4.67m max)

Bedroom Two

10' 5" max x 10' 5" max (3.17m max x 3.17m max)

Bedroom Three

9' 7" max extending to x 8' 4" max (2.92m max extending to x 2.54m max)

Bathroom

Total floor area 108.3 m² (1,166 sq.ft.) approx

This floor plan is for illustrative purposes only. It is not drawn to scale. Any measurements, floor areas (including any total floor area), openings and orientation are approximate. No details are guaranteed, they cannot be relied upon for any purpose and they do not form part of any agreement. No liability is taken for any error, omission or misstatement. A party must rely upon its own inspection(s). Powered by www.propertybox.io



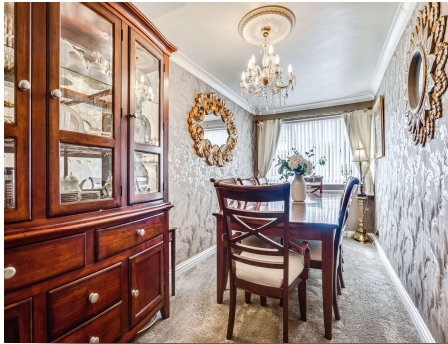
welcome to

Airedale Heights, Wakefield

- 3 bedroom detached family home
- Fixed price of £325,000
- Modern development of Snapethorpe, Wakefield
- Well-presented throughout making it move in ready!
- Off street parking for 2 vehicles

Tenure: Freehold EPC Rating: D
Council Tax Band: C

£325,000



Please note the marker reflects the
postcode not the actual property

view this property online [williamhbrown.co.uk/Property/WAK128051](https://www.williamhbrown.co.uk/Property/WAK128051)



Property Ref:
WAK128051 - 0002

1. MONEY LAUNDERING REGULATIONS Intending purchasers will be asked to produce identification documentation at a later stage and we would ask for your co-operation in order that there is no delay in agreeing the sale. 2. These particulars do not constitute part or all of an offer or contract. 3. The measurements indicated are supplied for guidance only and as such must be considered incorrect. Potential buyers are advised to recheck measurements before committing to any expense. 4. We have not tested any apparatus, equipment, fixtures or services and it is in the buyers interest to check the working condition of any appliances. 5. Where an EPC, or a Home Report (Scotland only) is held for this property, it is available for inspection at the branch by appointment. If you require a printed version of a Home Report, you will need to pay a reasonable production charge reflecting printing and other costs. 6. We are not able to offer an opinion either written or verbal on the content of these reports and this must be obtained from your legal representative. 7. Whilst we take care in preparing these reports, a buyer should ensure that his/her legal representative confirms as soon as possible all matters relating to title including the extent and boundaries of the property and other important matters before exchange of contracts.

William H Brown is a trading name of Sequence (UK) Limited which is registered in England and Wales under company number 4268443. Registered Office is Cumbria House, 16-20 Hockliffe Street, Leighton Buzzard, Bedfordshire, LU7 1GN. VAT Registration Number is 500 2481 05.



william h brown



01924 381381



Wakefield@williamhbrown.co.uk



2 Wood Street, WAKEFIELD, West Yorkshire,
WF1 2ED



[williamhbrown.co.uk](https://www.williamhbrown.co.uk)