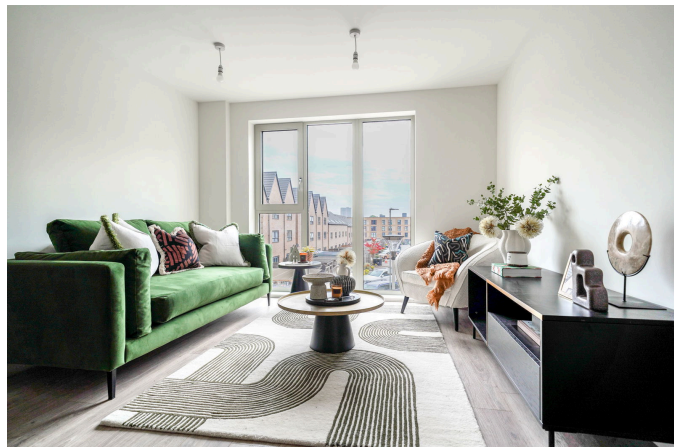


## The Origin, Phase 2, A4.01.04

From £250,000

1 bed 1 bath 1 car



3 Union Road, Shirley, Solihull B90 3BT

sales • new homes • land • commercial • mortgages • auction

Registered Company in England and Wales. Company No 03591917  
Registered Office: smart New Homes Ltd, 3 Union Road, Shirley, Solihull B90 3BT

- Central Location
- One Bedroom First floor apartment
- Contemporary Living Space
- Gymnasium
- Energy Efficient
- Excellent Transport Links
- Shops and restaurants just a short walk away
- Residents Lounge
- Parking allocation available to purchase
- Show home available to view



### **Stylish One-Bedroom Apartment – Brand New Development in Birmingham’s Vibrant Southside**

Investin and Bespoke Development Specialists are proud to present their latest collaboration, a stunning new collection of contemporary one- and two-bedroom apartments in the heart of Birmingham’s sought-after Southside district. Designed for modern city living, this exclusive development offers a premium lifestyle with access to exceptional on-site amenities, including a

3 Union Road, Shirley, Solihull B90 3BT

**sales • new homes • land • commercial • mortgages • auction**

Registered Company in England and Wales. Company No 03591917  
 Registered Office: smart New Homes Ltd, 3 Union Road, Shirley, Solihull B90 3BT

residents' lounge, state-of-the-art gymnasium, and beautifully landscaped courtyard communal spaces. Enjoy the best of urban living with shops, restaurants, and entertainment venues right on your doorstep.