



# Chartes House

Abbey Street, SE1

£2,500 per month  
(£576.92 per week)

A bright and spacious two-bedroom duplex apartment located within walking distance to London Bridge, Shad Thames, and the ever-so-popular Bermondsey Street.

**CHESTERTONS**



# Chartes House

Abbey Street, SE1

- Two Bedrooms
- One Bathroom
- Modern
- Furnished

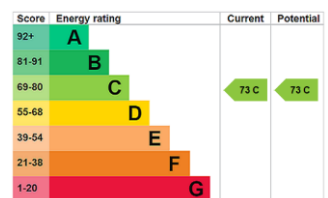


This split level apartment offers an abundance of natural light, generously sized bedrooms and is also just moments from the picturesque St Mary Magdalen Churchyard and Tanner Street Park.

Located within a quiet and well-maintained block, the apartment consists of two spacious double bedrooms, one with a walk-in wardrobe section, a modern bathroom, and a bright functional open plan reception with a contemporary kitchen. There is also great storage, double glazing, gas central heating, and resident permit parking.

With local attractions, including Borough Market, shops, bars, and restaurants only a short distance away, this apartment is highly desirable for local investors and owner-occupiers alike. This charming property also boasts fantastic transport links into The City and Canary Wharf with London Bridge and Bermondsey Underground Stations, plus local bus routes only a short walk away.

**Minimum Term:** 12 months  
**Deposit Required:** £0.00  
**Local Authority:** Southwark  
**Council Tax Band:** B  
**EPC Rating:** C  
**Furnished**



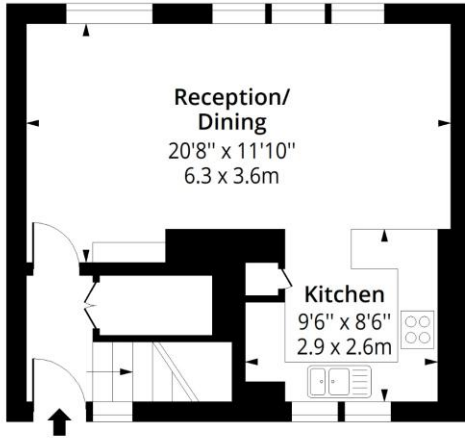
### *Chestertons Tower Bridge Lettings*

220 Tower Bridge Road  
 Tower Bridge  
 London  
 SE1 2UP  
 towerbridgelettingsusers@chestertons.co.uk  
 02073576911  
 chestertons.co.uk

Additional tenant charges apply (fees apply to non-AST tenancies only)  
 Tenancy Agreement Fee: £300  
 References per Tenant/Guarantor: £60  
 Inventory check (approx. £100 – £250 inc. VAT)  
[chestertons.co.uk/property-to-rent/applicable-fees](http://chestertons.co.uk/property-to-rent/applicable-fees)

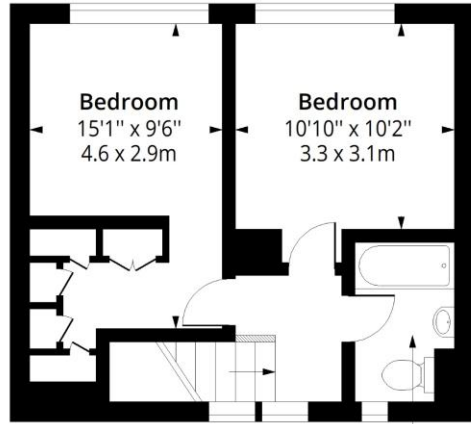
# Chartes House SE1

Approx. Gross Internal Area 773 Sq Ft - 71.81 Sq M



## First Floor

Floor Area 387 Sq Ft - 35.95 Sq M



7'10" x 5'3"  
2.6 x 1.6m

## Second Floor

Floor Area 386 Sq Ft - 35.86 Sq M



Measured according to RICS IPMS2. Floor plan is for illustrative purposes only and is not to scale. Every attempt has been made to ensure the accuracy of the floor plan shown, however all measurements, fixtures, fittings and data shown are an approximate interpretation for illustrative purposes only. 1 sq m = 10.76 sq feet.

lpaplus.com

Date: 4/21/2026

