

# Parsons Place

PARSONS PLACE, COATES ROAD, COATES



POSTLAND  
DEVELOPMENTS

**Sharman  
Quinney**

# Parsons Place

Parsons Place is a thoughtfully designed development comprising 20 new luxury homes brought to you by Postland Developments.

The layout includes a mix of 2, 3, 4, and 5-bedroom house types, alongside several self-build plots, featuring dedicated parking and garages. Accessed from Coates Road, the development benefits from carefully planned internal roads and turning areas, as well as retained hedgerows and a wildflower meadow, creating an attractive village-style neighbourhood.

*All computer-generated images (CGIs), floorplans, illustrations and imagery featured in this brochure are intended as an indicative representation only for guidance and marketing purposes. They may depict optional features, finishes, landscaping, lighting, internal layouts or materials which do not reflect the final build specification. Whilst every effort has been made to ensure accuracy, the developer reserves the right to make changes as required. Purchasers should refer to the full specification and consult with the sales team for up-to-date details.*



Image is CGI and only for illustrative purposes

# Parsons Place



# Parsons Place

## THE YORKE

A beautifully designed four-bedroom detached home with double garage, combining classic architectural charm with contemporary family living.



## AT A GLANCE



4



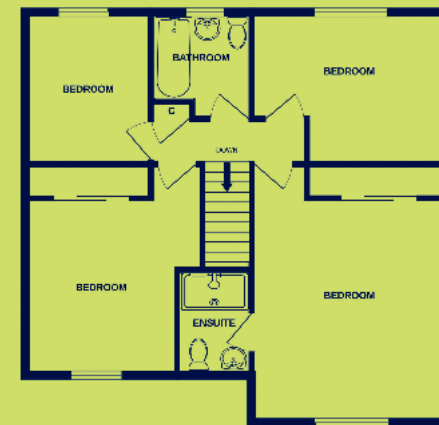
2



2



Ground floor



First floor



# Parsons Place

## THE CHURCHILL

An elegant and spacious five-bedroom detached home with double garage, thoughtfully designed for modern family living, set across three floors.

### AT A GLANCE



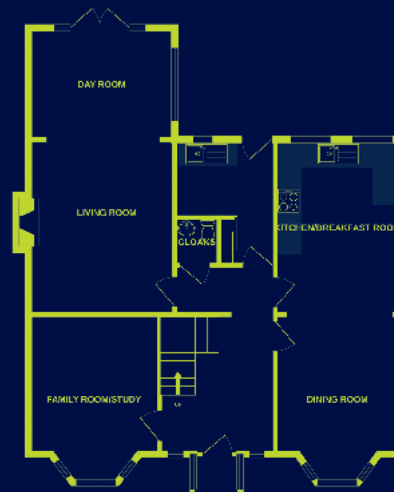
5



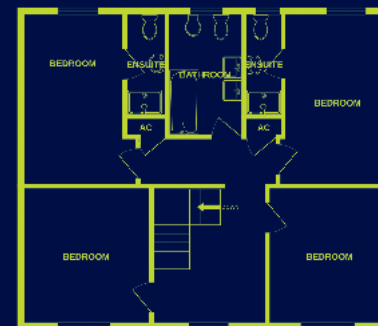
4



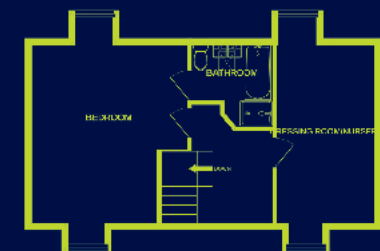
3



Ground floor



First floor



Second floor

# Parsons Place

## THE HORNSBY

A striking four-bedroom detached home combining traditional design with spacious modern living, featuring two en-suite bedrooms, versatile ground-floor spaces and a double garage.



## AT A GLANCE



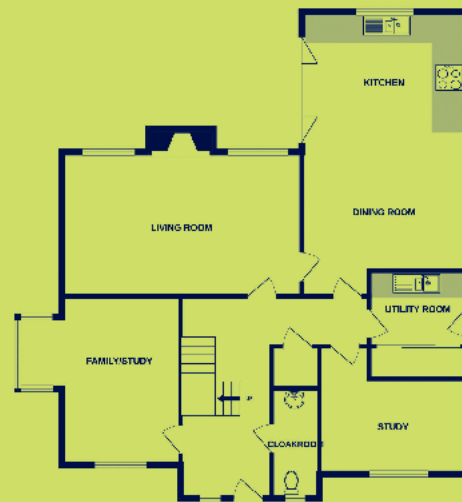
4



3



3



Ground floor



First floor



# Parsons Place

## THE JAMES

A beautifully crafted two/three bedroom detached home offering characterful design, spacious modern living, and a double garage, all set within an attractive and thoughtfully landscaped setting.

### AT A GLANCE



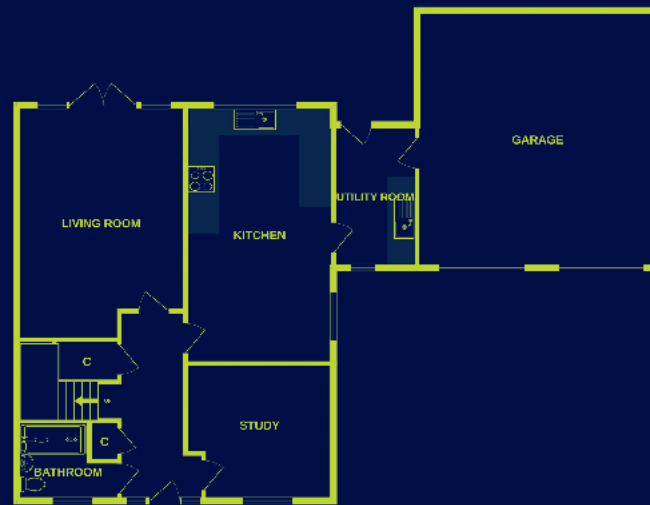
2/3



3



1/2



Ground floor



First floor

# Parsons Place

## THE EATON

A beautifully designed three-bedroom detached bungalow offering spacious single-storey living, elegant character details, and modern comfort, complete with a detached single garage in a thoughtfully landscaped setting.



## AT A GLANCE



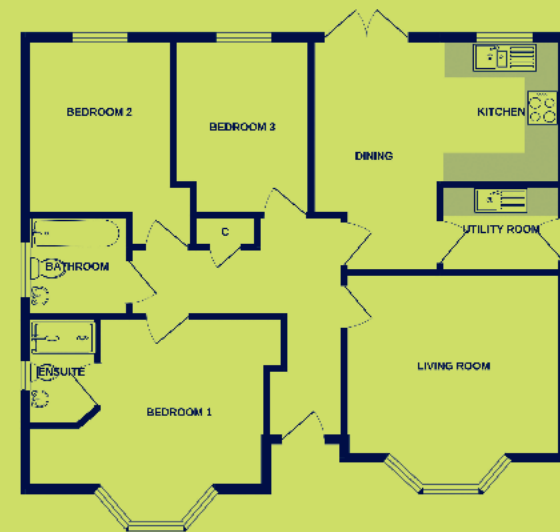
3



2



1



Ground floor

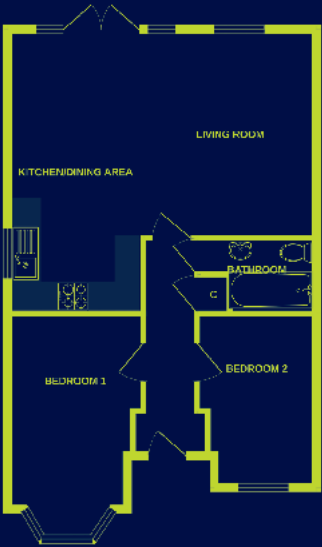


# Parsons Place

## THE FULTON

A beautifully designed two-bedroom semi-detached bungalow offering bright, modern single-storey living with charming character features and a single garage.

### AT A GLANCE



Ground floor

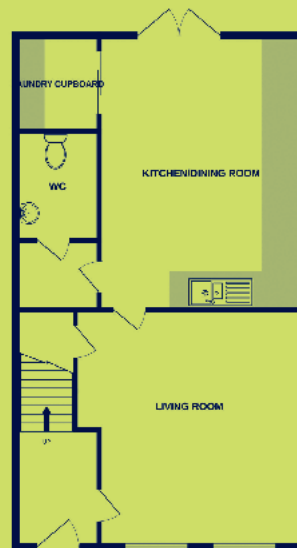
# Parsons Place

## THE BLAKELY

A charming three-storey, three-bedroom semi-detached home offering flexible modern living, a superb principal suite, and a stylish open-plan layout perfect for contemporary lifestyles.



## AT A GLANCE



Ground floor



First floor



Second floor

# Parsons Place

## **SPECIFICATION:**

These homes boast a range of stunning features which only add to the appeal of this exclusive development. You will find everything you need to enhance your lifestyle and enjoy your new home.

- 10 year structural warranty
- Fully fitted kitchens with integrated NEFF double-oven, induction hob, fridge freezer and dishwasher
- LVT flooring to kitchen/dining area, utility, bathroom, ensuite and hallway, Postland Premium Carpet elsewhere included as standard
- Ideal Standard White contemporary sanitary ware
- Air source heat pump
- Outside tap to rear garden
- Outside lights to front door and patio door
- TV points - lounge and bedrooms CAT 5 cable
- Electric car charging point
- Full fibre



# Parsons Place

## LOCATION

Parsons Place, Coates Road, Coates, PE7 2BE

## CONTACT

Sharman Quinney Whittlesey  
46a Market Street, Whittlesey,  
Peterborough PE7 1BD

## TELEPHONE

01733 205 000

## EMAIL

[whittlesey@sharmanquinney.co.uk](mailto:whittlesey@sharmanquinney.co.uk)





# Parsons Place

PARSONS PLACE, COATES ROAD, COATES



POSTLAND  
DEVELOPMENTS

**Sharman  
Quinney**

[sharmanquinney.co.uk](http://sharmanquinney.co.uk)