



# Sentinel Road

West Hunsbury, Northampton

**oriordanbond**  
SALES & LETTINGS





## Sentinel Road

West Hunsbury

NN4 9UF

PRICE £249,995

Offered to the market with no onward chain is this well presented two bedroom semi-detached home, nestled in a popular cul-de-sac, within the desirable area of West Hunsbury.

This property offers accommodation over two floors comprising entrance hall via a uPVC door with a further door leading to a lovely kitchen/dining room with integrated appliances, a sitting room with stairs to the first floor and a brick and uPVC double glazed conservatory. To the first floor is access to the loft space, doors to two ample bedrooms and a modern fitted bathroom with shower over the bath. Outside is a lawned front garden with driveway for two cars leading to an attached single garage. The rear garden is south/westerly facing and private, backing onto woodland, offering a paved patio seating area, lawn and timber fencing to enclose. Further benefits include uPVC double glazing and gas radiator heating. (B/676/M)

### Additional information

- Council Tax Band: B
- Energy Efficiency Rating: C

### Viewing

Viewing strictly by appointment – details below

### Disclaimer

O'Riordan Bond Estate Agents Limited has not tested apparatus, equipment, fittings or services and so cannot verify they are in working order. The buyer is advised to obtain verification from their solicitor or surveyor.

O'Riordan Bond Hunsbury Sales

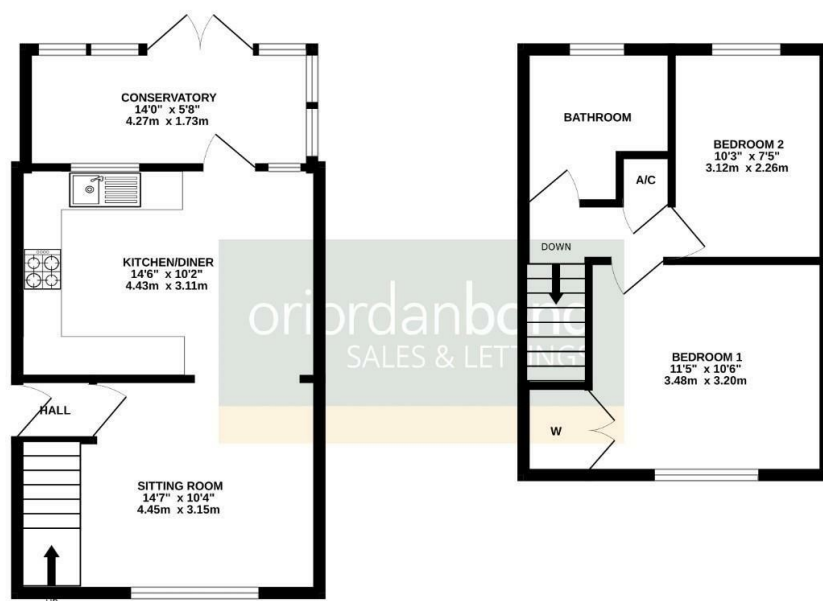
01604 706007

[hunsbury@oriordanbond.co.uk](mailto:hunsbury@oriordanbond.co.uk)



GROUND FLOOR  
377 sq.ft. (35.0 sq.m.) approx.

1ST FLOOR  
299 sq.ft. (27.7 sq.m.) approx.



TOTAL FLOOR AREA: 676 sq.ft. (62.8 sq.m.) approx.

Whilst every attempt has been made to ensure the accuracy of the floorplan contained here, measurements of doors, windows, rooms and any other items are approximate and no responsibility is taken for any error, omission or mis-statement. This plan is for illustrative purposes only and should be used as such by any prospective purchaser. The services, systems and appliances shown have not been tested and no guarantee as to their operability or efficiency can be given.

Made with Metropix G2026