



Huntington House, Palmer Road Offers In Excess Of £2,500,000

A spectacular three bedroom premium apartment set within the Prince of Wales Drive development. Offering approximately 2000 ft of luxurious accommodation, this stunning property boasts floor to ceiling windows with views of Battersea Park, a private roof terrace, two en suite bathrooms and a separate WC. The property comes inclusive of parking and basement storage unit.

Conveniently located for transport links to Victoria, Battersea Power Station, Vauxhall and Chelsea, this luxury development features a residents swimming pool, spa, 24 hour concierge service and outstanding meeting rooms games rooms and work space.

Approx. 992 years remaining on lease
Ground rent amount: Ask Agent
Ground rent review period: Ask Agent
Service charge amount: approx. Ask Agent
Service charge review period: N/A
Council tax band: G (Wandsworth Council)

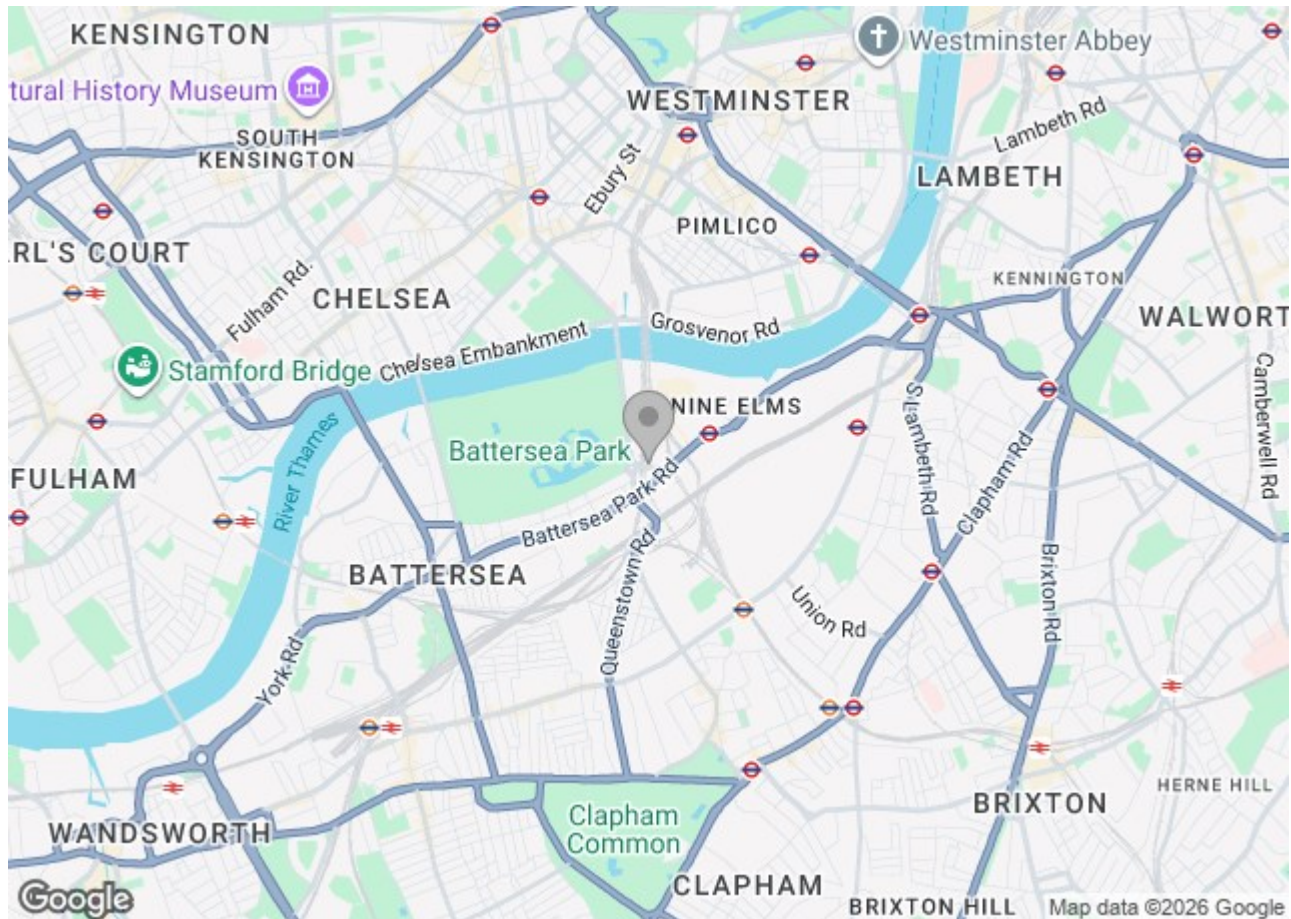
Electricity supply – Mains | Heating & Cooling – Communal | Water supply – Mains | Sewerage – Mains | Internet: Fibre | Lift Access | Parking Included | Cladding: EWS1 Certificate available

To check broadband and mobile phone coverage please visit Ofcom
To check planning permission please visit Wandsworth Council Website, Planning & Building Control

11 Palmer Road London

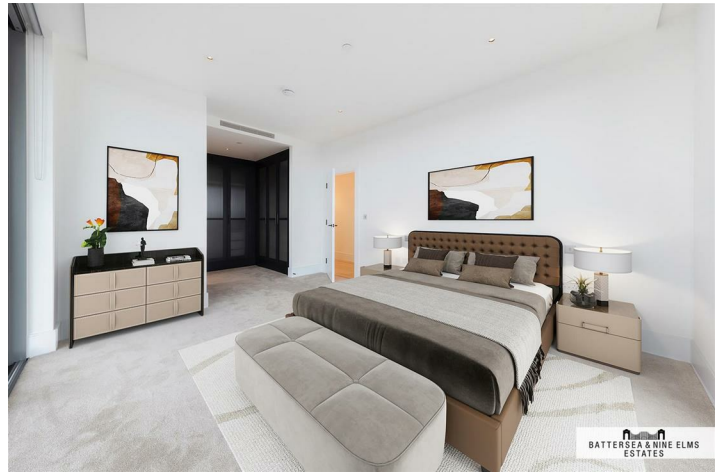


- Three bedrooms
- Three Bathrooms (Two en-suite)
- Secure parking
- 24 Hour concierge
- Residents swimming pool
- Underfloor heating & comfort cooling
- Furniture are computer generated images (CGI) for example only





BATTERSEA & NINE ELMS
ESTATES



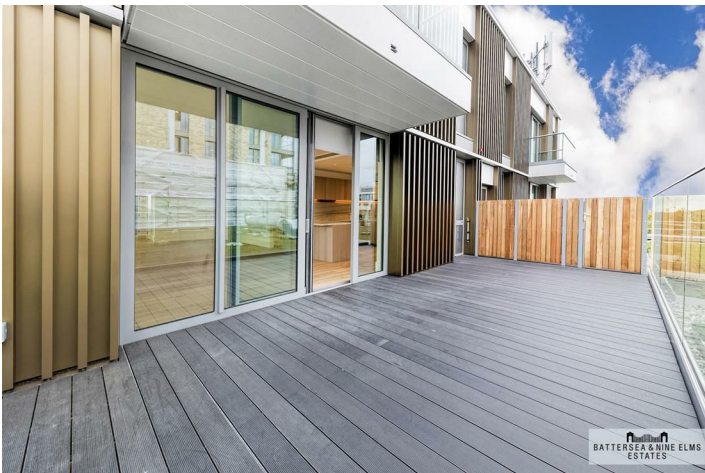
BATTERSEA & NINE ELMS
ESTATES



BATTERSEA & NINE ELMS
ESTATES



BATTERSEA & NINE ELMS
ESTATES



BATTERSEA & NINE ELMS
ESTATES



BATTERSEA & NINE ELMS
ESTATES



BATTERSEA & NINE ELMS
ESTATES



BATTERSEA & NINE ELMS
ESTATES

