



## MANCHESTER STREET, W1U

£1,100,000

One bedroom  
Long lease  
Modern kitchen  
Prime location  
First floor  
Communal patio

@marshandparsons  
marshandparsons.co.uk

MARSH &  
PARSONS



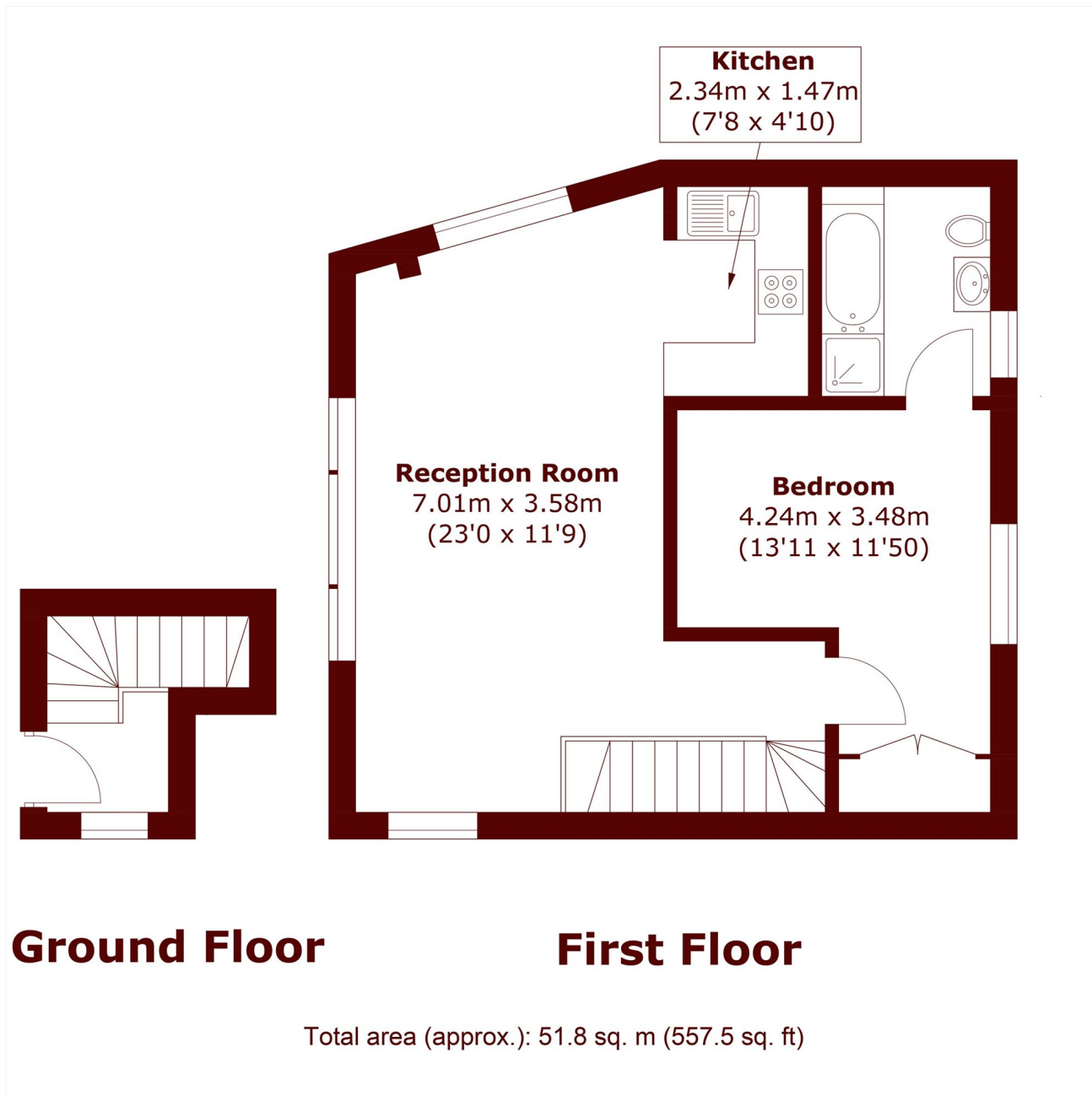
# ABOUT THE PROPERTY

Separate to the main building an extremely rare opportunity to acquire a beautifully presented one-bedroom apartment with its own private entrance and direct access to a charming communal patio overlooking Paddington Street Gardens. Tucked away behind an attractive Georgian building in the heart of Marylebone, this unique home features a new kitchen, ample storage, exceptional soundproofing, and secondary glazing throughout, offering both tranquillity and modern comfort.

Manchester Street is one of Marylebone's most desirable and picturesque streets, ideally positioned moments from Marylebone High Street, Paddington Street Gardens, and



# STEP INSIDE MANCHESTER STREET



Marylebone & Mayfair  
020 7935 1775

Energy Rating: We aim to make our particulars both accurate and reliable. However, they are not guaranteed; nor do they form part of an offer or contract. If you require clarification on any points then please contact us, especially if you're traveling some distance to view. Please note that appliances and heating systems have not been tested and therefore no warranties can be given as to their good working order

MARSH &  
PARSONS