



HOLLAND PARK AVENUE, W11

£3,700 per month

Set on the first floor of a contemporary building, this two bedroom apartment features wood flooring throughout and a well-proportioned reception room that opens onto a private balcony.

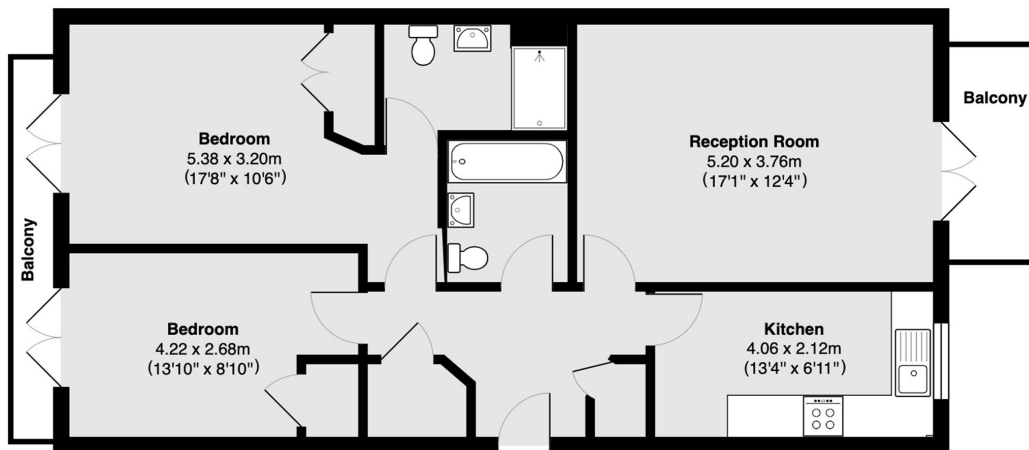
Two Bedroom
Two Bathroom
First Floor

Lift Access
Recently Refurbished
Gated Parking

@marshandparsons
marshandparsons.co.uk

MARSH &
PARSONS

STEP INSIDE HOLLAND PARK AVENUE



Total area 76 sq m (approx) (818 sq ft approx)

Balcony area 7 sq m (approx) (75 sq ft approx)

Holland Park
020 7605 6895

Energy Rating: C We aim to make our particulars both accurate and reliable. However, they are not guaranteed; nor do they form part of an offer or contract. If you require clarification on any points then please contact us, especially if you're traveling some distance to view. Please note that appliances and heating systems have not been tested and therefore no warranties can be given as to their good working order

**MARSH &
PARSONS**