

CONSTANTINE COURT, FAIRCLOUGH STREET,

£3,100 PER MONTH

* STUNNING & UNIQUE WAREHOUSE CONVERSION * Step into luxury with this large and stunning 1 bedroom warehouse conversion nestled in the heart of E1.

Boasting high ceilings with beautiful open wooden beams and captivating exposed brick feature walls, this property is full of charm and character. Spanning over 1000 sqft, the property benefits an expansive living/dining room with wooden flooring and is open plan to the modern fitted kitchen.

The bedroom has fitted wardrobes and offers access to the private balcony. There is also a tiled family bathroom.

The property has fantastic transport links, being located minutes from Tower hill and Aldgate east stations.

Available immediately.



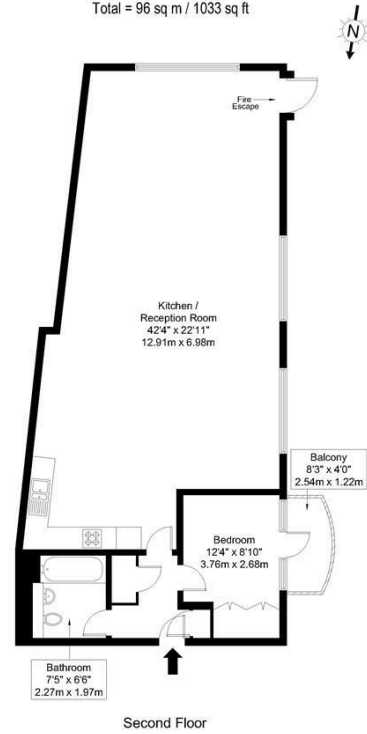
Goldman Greg

Fairclough Street, E1 1PW

Approx Gross Internal Area = 93 sq m / 1001 sq ft

Balcony = 3 sq m / 32 sq ft

Total = 96 sq m / 1033 sq ft



Ref:

Copyright **BLEU
PLAN**

The Floor plan is not to scale and measurements and areas shown are approximate and therefore should be used for illustrative purposes only. The plan has been prepared in accordance with the RICS code of Measuring Practice and whilst we have confidence in the information produced it must not be relied on. Maximum lengths and widths are represented on the floor plan. If there is any aspect of particular importance, you should carry out or commission your own inspection of the property.

Copyright @ BLEUPLAN



Energy Efficiency Rating		Current	Potential
Very energy efficient - lower running costs			
(92 plus) A			
(81-91) B			
(69-80) C			72
(55-68) D		52	
(39-54) E			
(21-38) F			
(1-20) G			
Not energy efficient - higher running costs			
England & Wales		EU Directive 2002/91/EC	

Agents Note: Whilst every care has been taken to prepare these particulars, they are for guidance purposes only. All measurements are approximate and are for general guidance purposes only and whilst every care has been taken to ensure their accuracy, they should not be relied upon and potential buyers/tenants are advised to recheck the measurements

Goldman Greg
143 Leman Street
London
E1 8EY

02079770018
leads@goldmangreg.co.uk
www.goldmangreg.co.uk

