



Guide Price
£500,000

Freehold

4x  2x  2x 

**Old Road East,
Gravesend, Kent, DA12**

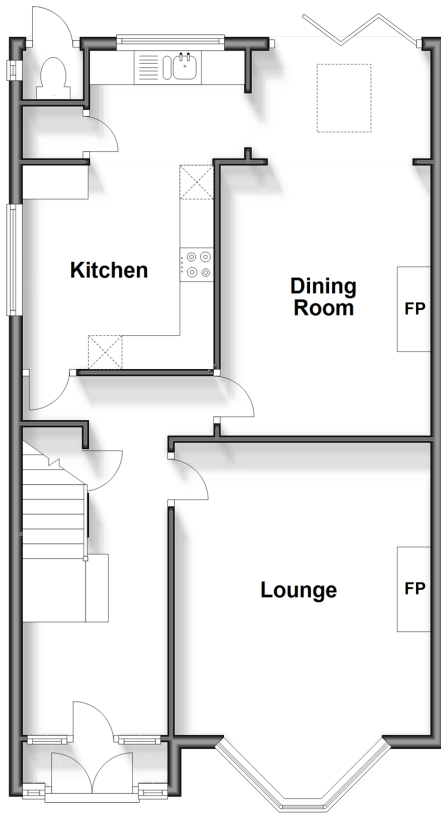
OVER 60?

Secure this property
for up to **59% less!**

Wards
Helping you move forwards

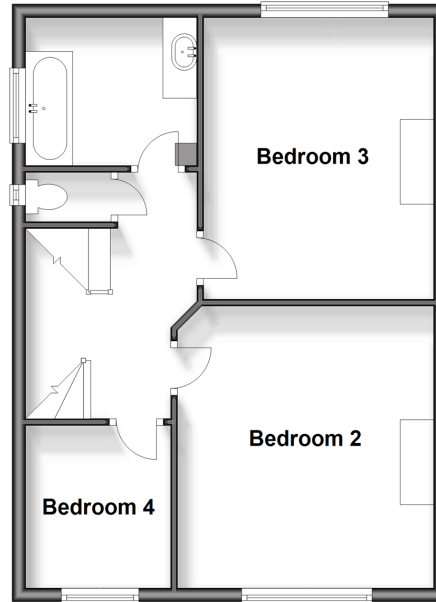
Ground Floor

Approx. 63.0 sq. metres (677.7 sq. feet)



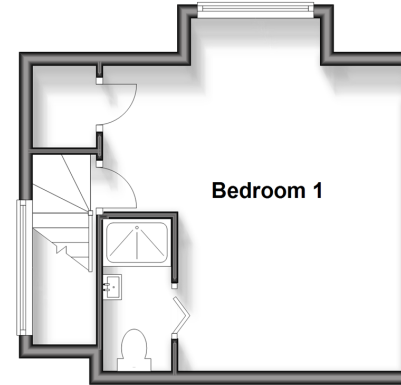
First Floor

Approx. 50.9 sq. metres (548.3 sq. feet)



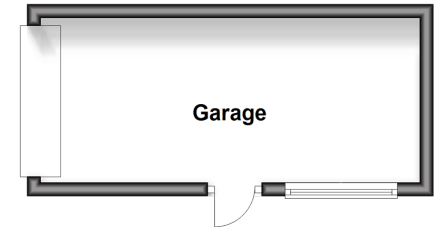
Second Floor

Approx. 25.7 sq. metres (276.3 sq. feet)



Outbuilding

Approx. 13.7 sq. metres (147.5 sq. feet)



Accommodation

GROUND FLOOR

Entrance Porch

Entrance Hall

Lounge : 17'2 into bay x 12'5 (5.24m x 3.79m)

Dining Room : 19'2 x 8'10 (5.85m x 2.69m)

Kitchen : (L-shaped) 9'8 x 8'11 (2.95m x 2.72m)
plus 7'4 x 5'4 (2.24m x 1.63m)

FIRST FLOOR

Landing

Bedroom 2: 13'1 x 12'7 (3.99m x 3.84m)

Bedroom 3: 13'4 x 11'6 (4.07m x 3.51m)

Bedroom 4: 7'9 x 6'11 (2.36m x 2.11m)

Bathroom

Toilet

SECOND FLOOR

Bedroom 1: 17'2 x 15'11 (5.24m x 4.85m)

En-suite Shower Room

OUTBUILDING

Garage

OUTSIDE

Front Garden

Driveway

Rear Garden

Toilet



Main features

- Beautiful spacious house with period features
- Main bathroom and en-suite bathroom on the second floor
- Lounge and separate dining room
- Parking at the front and back of the property with a garage to the rear
- Close to local amenities and good schools



Nearest Schools

Primary Schools: St John's Catholic Primary, Gravesend 0.3 miles, Whitehill Primary 0.3 miles

Secondary Schools: St John's Catholic Comprehensive 0.2 miles, Gravesend Grammar School 0.3 miles



Transport Information

Train Stations: Gravesend 0.8 miles, Ebbsfleet International 2.5 miles



Address

Old Road East, Gravesend, Kent, DA12



Directions

For directions to this property please contact us.



Call Gravesend Branch 01474 352417 ■ wardsofkent.co.uk



- The seller is a person connected with Wards as defined in the Estate Agents Act 1979
- Appliances & services are untested, dimensions are approximate and floor plans are not to scale

- Legal advice should be taken to verify fixtures/fittings, planning, alterations and/or lease details
- Through a Homewise Home For Life Plan people aged 60+ can secure this property for up to 59% less, by purchasing a Lifetime Lease



11130179/20260120/MM/KG