

PROSPECT

— LONDON —

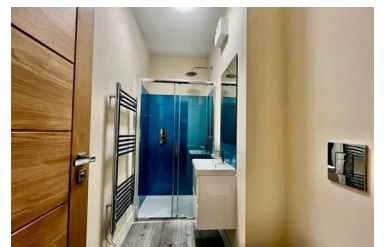


239 Southwark Park Road, London, SE16 3TS

£2,000 Per month



A bright and spacious two bedroom two bathroom apartment with private balcony well situated for Bermondsey tube station.



- PRIVATE BALCONY
- TWO BATHROOMS
- TWO DOUBLE BEDROOMS
- BIKE STORAGE