



BRENNAN

BESPOKE

OFFERS IN EXCESS OF

£240,000

Victoria Street

EARLS BARTON, NN6 0LJ

This recently refurbished two-bedroom mid-terrace home on Victoria Street offers a fantastic opportunity for buyers looking for a property that's ready to move straight into, finished to a premium standard throughout. The accommodation begins with an entrance hall leading through to a stylish lounge, providing a comfortable space to relax at the end of the day. To the rear, there is a separate dining area which works perfectly for everyday meals and entertaining, flowing through to the refitted kitchen which has been finished with a modern look and practical layout, complemented by a useful ground floor WC. Upstairs, the first floor offers two well-proportioned bedrooms, along with a contemporary family bathroom, all presented in keeping with the high-quality finish seen throughout the home. Outside, the rear garden is a great additional feature, mostly laid to lawn and offering a pleasant space for summer seating, children or pets, with scope for further personalisation if desired. Situated within the popular village of Earls Barton, the property is well placed for local amenities, schooling and commuter links, making it an ideal purchase for first-time buyers, downsizers or investors alike.

2



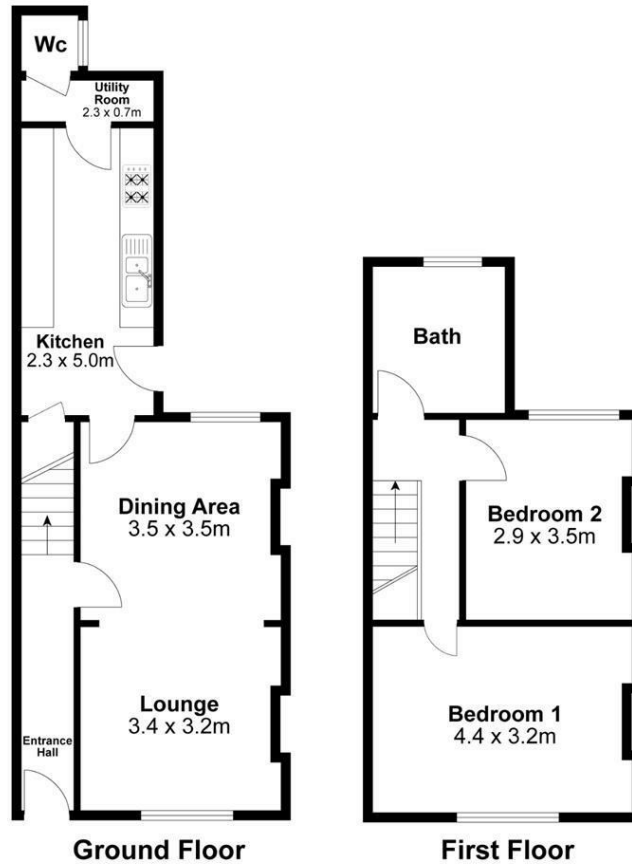
1



1







For identification only not to scale

Internal Area Approx. : 78m²

BRENNAN
BESPOKE

LOCAL AUTHORITY
North Northamptonshire

TENURE
Freehold

COUNCIL TAX BAND
B

VIEWINGS
By prior appointment only

Energy Efficiency Rating		Current	Potential
<i>Very energy efficient - lower running costs</i>			
(92 plus) A			
(81-91) B			
(69-80) C			
(55-68) D			
(39-54) E			
(21-38) F			
(1-20) G			
<i>Not energy efficient - higher running costs</i>			
England & Wales		EU Directive 2002/91/EC	
		69	81

Agents Note: Whilst every care has been taken to prepare these particulars, they are for guidance purposes only. All measurements are approximate and are for general guidance purposes only and whilst every care has been taken to ensure their accuracy, they should not be relied upon and potential buyers/tenants are advised to recheck the measurements

BRENNAN
BESPOKE

OFFICE ADDRESS
BRENNAN BESPOKE
2 The Tithe Barn Glendon Lodge Farm
Glendon
Kettering
Northamptonshire
NN14 1QF

OFFICE DETAILS
01536 904400
info@brennanbespoke.co.uk
<https://www.brennanbespoke.co.uk>