

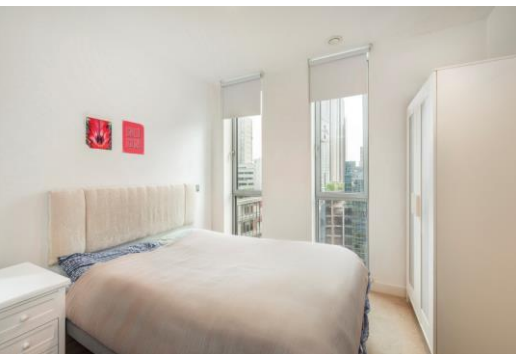


Pan Peninsula Square

London, E14

Offers in excess of £425,000

A one-bedroom apartment set on the 7th floor of the East Tower of Pan Peninsula, Canary Wharf E14. Features include a dual aspect living room with private balcony overlooking the Millwall Dock.



Pan Peninsula Square

London, E14

- One-bedroom apartment with East facing balcony
- Located on the 7th floor
- Exceptional location in the heart of South Quay
- 24hr concierge, residents' gym, 16m pool and cinema facilities.
- EWS1 compliant.
- Offered chain-free.



A one-bedroom apartment located on the 7th floor of the popular Pan Peninsula development in Canary Wharf. This attractive apartment has a North and East facing aspect and benefits from views over the Millwall Dock. The property comprises an open-plan kitchen living area, double bedroom and an attractive marble bathroom.

Pan Peninsula is a premium development with 24hr concierge, gym, swimming pool, spa, business centre and cinema. The building rises above the global financial district, Canary Wharf, and is a stones throw away from an abundance of bars, restaurants and shops. The development is conveniently located next to South Quay DLR station and a short stroll to Canary Wharf for the Jubilee Line and Crossrail services.

Tenure: Leasehold 981 years 4 months

Service Charge: £5950 approx.

Ground Rent: £500 for the first 25 years of the Term such sum to double every

Local Authority: Tower Hamlets

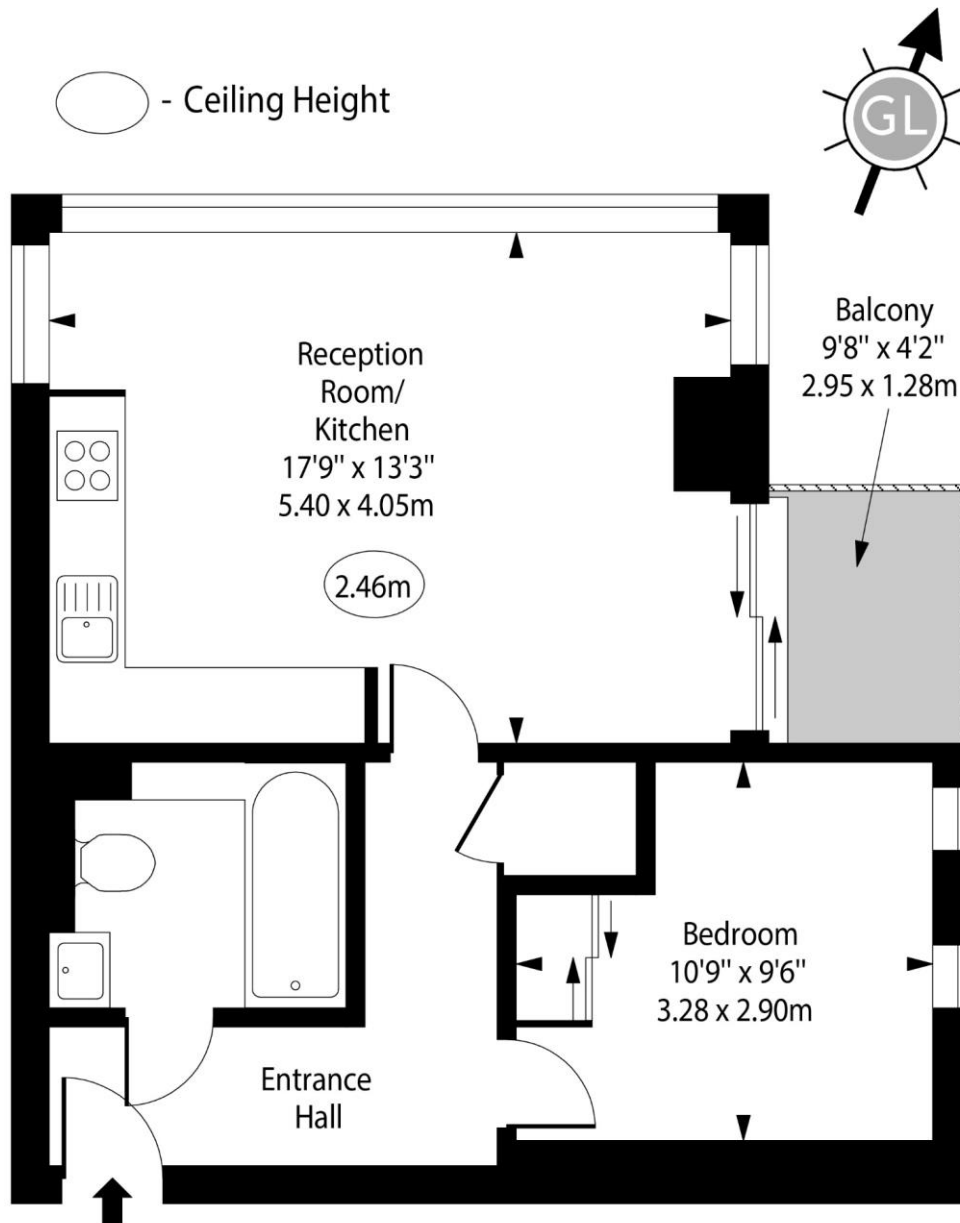
Council Tax Band: F

Energy Efficiency Rating		
	Current	Potential
Very energy efficient - lower running costs		
A (92-100)		
B (81-91)	82	84
C (69-80)		
D (55-68)		
E (39-54)		
F (21-38)		
G (1-20)		
Not energy efficient - higher running costs		
England, Scotland & Wales		EU Directive 2002/91/EC

Chestertons Canary Wharf & Greenwich Sales

Harbour Island
28 Harbour Exchange Square
London
E14 9GE
canarywharf@chestertons.co.uk
020 7510 8300
chestertons.co.uk

Pan Peninsula Square, E14



Seventh Floor

Approx Gross Internal Area 478 Sq Ft - 44.40 Sq M

For Illustration Purposes Only - Not To Scale

www.goldlens.co.uk

Ref. No. 024061J

