



## Campden Hill Square, W8

£12,000 Per calendar month

**Dexters**



## Campden Hill Square, W8

A beautifully refurbished Arts and Crafts-style house on a desirable residential street in prime Kensington. Originally constructed in 1929 by renowned architect T.P. Figgis, this exceptional home also benefits from the option to apply for access to one of Kensington's most desirable private garden squares.

An immaculately presented house, measuring 2,066 sq ft over four floors. Entered on the ground floor into a stylish, open plan reception and dining area with a high specification kitchen, this space features wooden floors, a striking feature fireplace, and direct access to a South-West facing patio garden - perfect for entertaining.

The lower ground floor offers a flexible living area with high ceilings, a separate utility room, and clever 'Blue Sky' ceiling lights. Currently arranged as a study and spacious second reception room, it also opens onto a private enclosed patio. Upstairs, the principal bedroom has a luxurious en suite and built-in wardrobes, accompanied by four further bedrooms and a family bathroom.

Campden Hill Square has the highly regarded Fox Primary School and the green spaces of Holland Park nearby, making this an exceptional location for families seeking both convenience and quality of life.

### Features

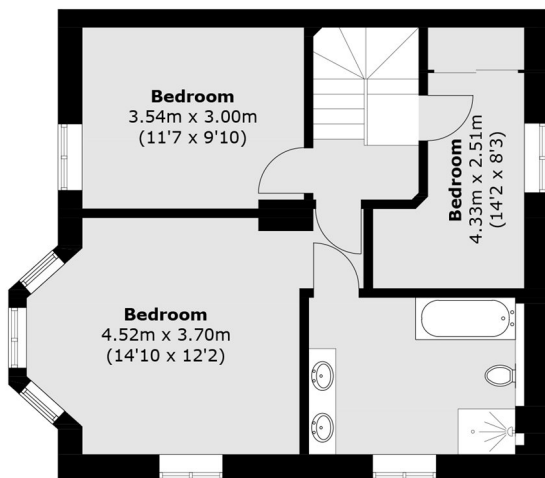
- Semi-Detached House
- Five Bedrooms
- Two Bathrooms and Two WC's
- Unfurnished
- South-West Patio Garden
- High Specification



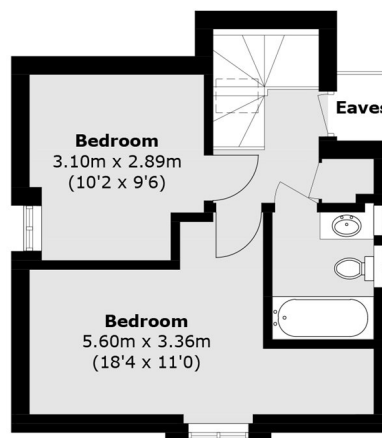




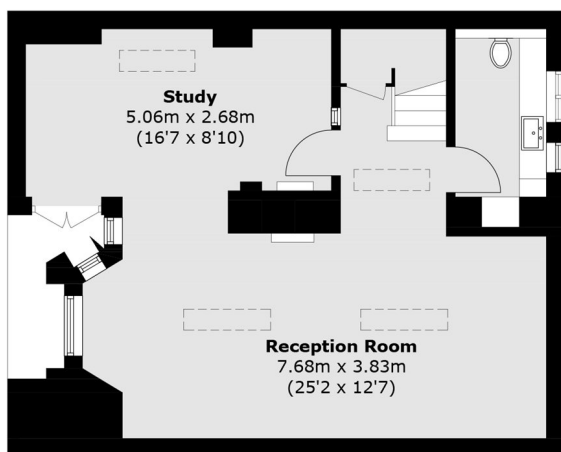
# Campden Hill Square, London, W8



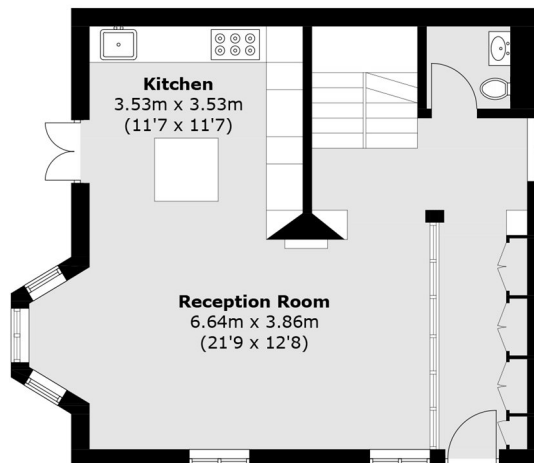
**First Floor**



**Second Floor**



**Basement**



**Ground Floor**

Total area (approx.): 192.0 sq. m (2,066.6 sq. ft)  
(Including Basement/ Excluding Eaves)