

Royal Drive, N11

£460,000

Situated in a private development is this stunning two double bedroom flat with direct access onto a private courtyard garden. The flat benefits from having a open plan kitchen/living space, double glazed sash windows and access to tennis courts, gym and well kept communal gardens.

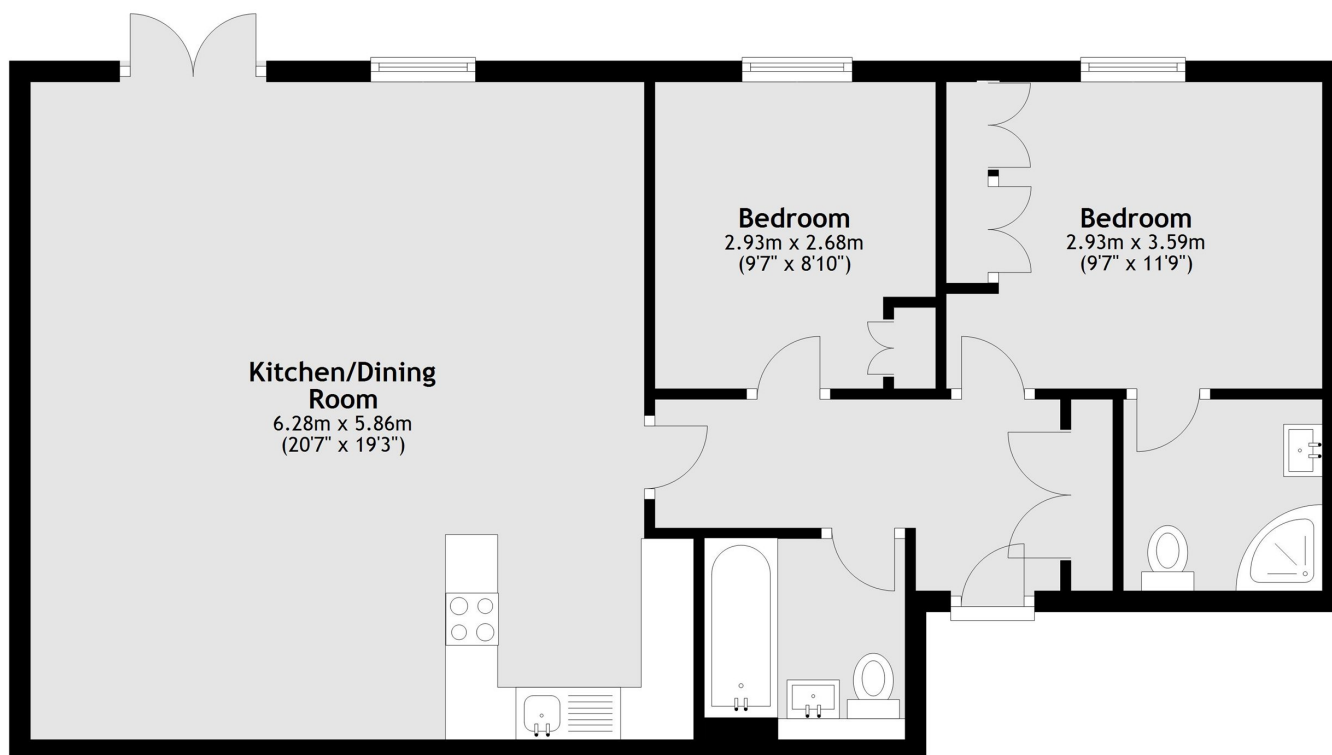
Set in a parkland setting with 24 hour security located less than 0.5 miles to New Southgate train station and within catchment for some of the top local schools.

Features

- Two Bedrooms
- Two Bathrooms
- Double Glazed Sash Windows
- Private Courtyard Garden
- Chain Free
- Off Street Parking

Royal Drive, London, N11

Lower Ground Floor



Total area: approx. 71.8 sq. metres (772.7 sq. feet)