



The Willows, Faringdon

GUIDE PRICE £480,000 - £500,000



4 Bed



2 Bath

The Willows – Detached Family Home in Quiet Highworth Cul-de-Sac

Located in a peaceful and sought-after cul-de-sac in Highworth, The Willows is a spacious detached family home offering versatile living accommodation and well-designed outdoor space.

The ground floor features an entrance hallway leading to a downstairs WC, a welcoming lounge, a separate dining room, kitchen and integral access to the garage. Practical touches include under-stair storage, French doors from the dining room opening onto the garden, and additional garden access from the kitchen.

Upstairs, the property comprises a primary bedroom with built-in storage and an ensuite shower room, two further double bedrooms, a single bedroom, and a main family bathroom with a four-piece suite, including a freestanding bath.

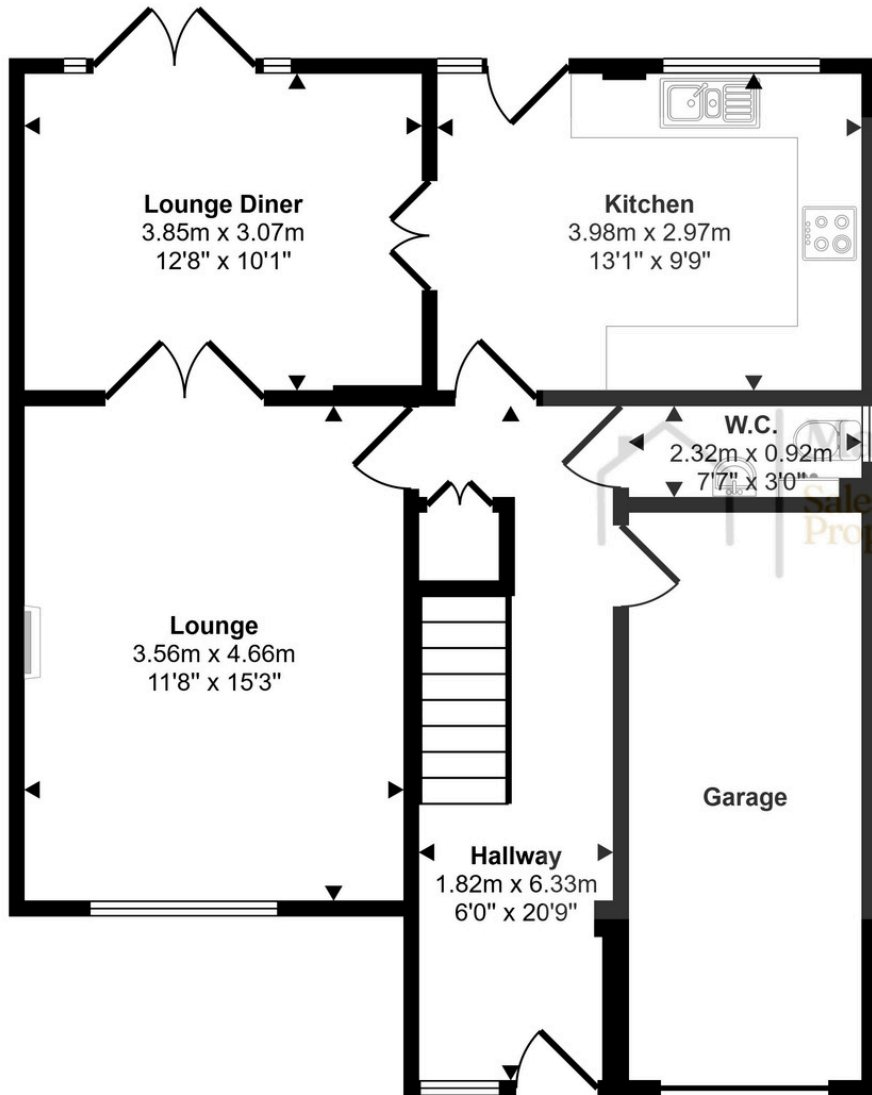
Externally, the home benefits from driveway parking, rear access to the garden from both sides of the property, and a landscaped garden, perfect for entertaining.

This property is offered chain free.

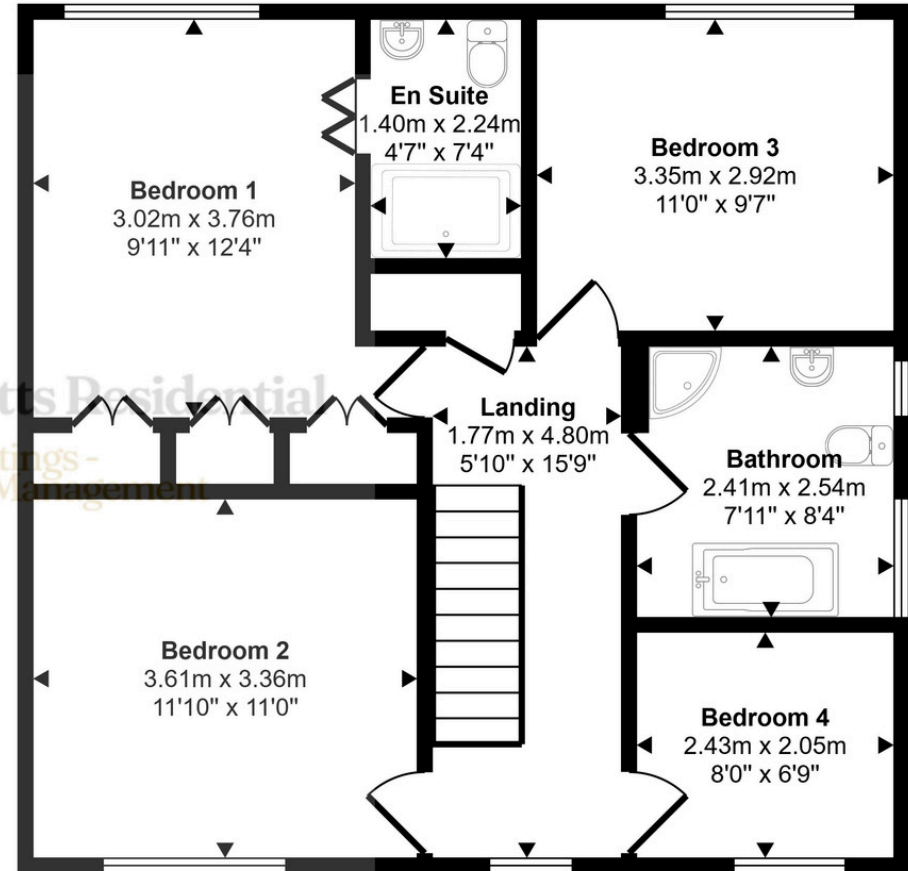
EPC Rated C.



Approx Gross Internal Area
133 sq m / 1432 sq ft



Ground Floor
Approx 69 sq m / 748 sq ft



First Floor
Approx 64 sq m / 684 sq ft

This floorplan is only for illustrative purposes and is not to scale. Measurements of rooms, doors, windows, and any items are approximate and no responsibility is taken for any error, omission or mis-statement. Icons of items such as bathroom suites are representations only and may not look like the real items. Made with Made Snappy 360.