



# REWE BARTON

REWE, EXETER, EX5 4EH



**Robert Williams**

SALES | LETTINGS | AUCTIONS



“A barn so bright, it feels just right, with vaulted beams, the home of dreams, a charming space such a happy place.”





# REWE BARTON

REWE, EXETER, EX5 4EH

**A beautifully converted three-bedroom barn, blending character and contemporary living in the peaceful village of Rewe.**

Filled with natural light, the home features a generous kitchen and dining area—the heart of the house—alongside a striking reception room with vaulted ceilings and exposed beams, perfect for relaxing or entertaining.

The master bedroom benefits from a private ensuite, while two further double bedrooms share a stylish family bathroom. Each room has been designed to maximise space and light, offering comfortable accommodation for family, guests, or flexible home working.

Outside, a large walled garden provides privacy and a tranquil space for alfresco dining, children’s play, or enjoying the countryside. The garden is mainly laid to lawn, with potential for planting or landscaping to suit your own taste.

Set within a quiet courtyard yet just a short drive from Exeter, the property combines rural charm with convenience. The village offers scenic walks, local amenities, and a strong sense of community, making it an ideal place to live. This property represents a rare opportunity to acquire a stylish barn conversion with generous living space and character.

3



bedrooms

2




bathrooms

1



receptions

2



car spaces

Local Authority:

Devon County Council

Council Tax Band:

E

Tenure:

Freehold

Heating:

Gas Central Heating

Services:

Mains water and drainage

Energy Efficiency Rating:

E



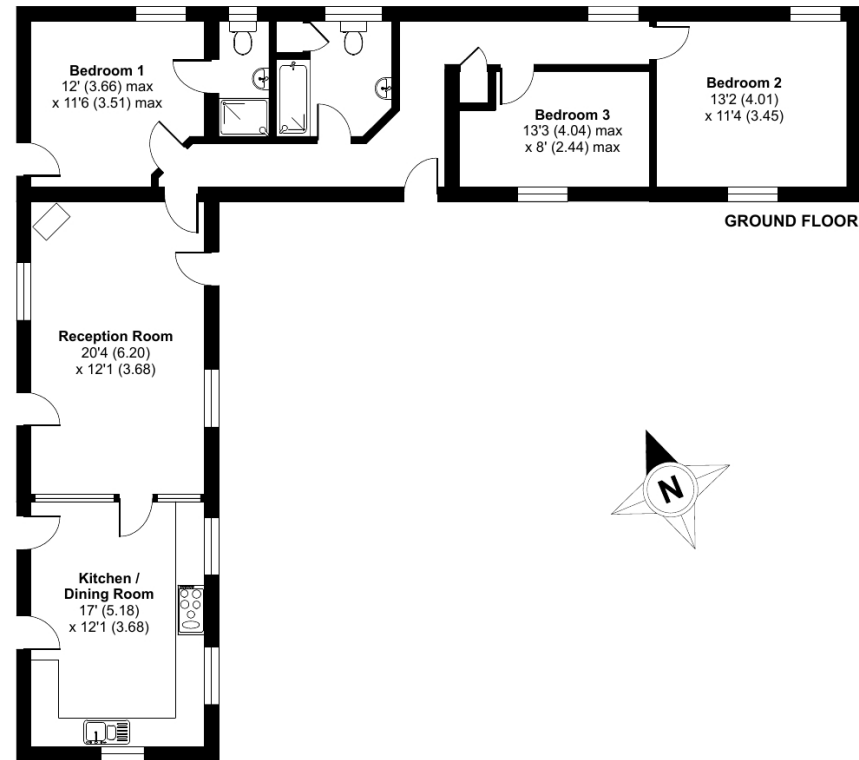




## Rewe Barton, Rewe, Exeter, EX5

Approximate Area = 1115 sq ft / 103.5 sq m

For identification only - Not to scale



Floor plan produced in accordance with RICS Property Measurement 2nd Edition, Incorporating International Property Measurement Standards (IPMS2 Residential). © nitchecom 2025. Produced for Robert Williams Ltd. REF: 1375820



# Robert Williams

SALES | LETTINGS | AUCTIONS

Robert Williams Estate Agents, 2 Southernhay West, Exeter, EX1 1JG

Tel: 01392 204800 • [sales@robertwilliams.co.uk](mailto:sales@robertwilliams.co.uk) • [robertwilliams.co.uk](http://robertwilliams.co.uk)

IMPORTANT: we would like to inform prospective purchasers that these sales particulars have been prepared as a general guide only. A detailed survey has not been carried out, nor the services, appliances and fittings tested. Room sizes should not be relied upon for furnishing purposes and are approximate. If floor plans are included, they are for guidance only and illustration purposes only and may not be to scale. If there are any important matters likely to affect your decision to buy, please contact us before viewing the property.