



**MONACO HOUSE**  
LYNTON COURT, CENTURY  
WHARF  
CARDIFF BAY CF10 5NF

OFFERS IN EXCESS OF  
**£150,000**



**ONE BEDROOM APARTMENT**



**1**



**1**



**1**



**1**

**\*\*IDEAL FIRST TIME PURCHASE \*NO CHAIN\*\*** MGY are pleased to present for sale, a large one bedroom, first floor apartment within the highly sought after development, Century Wharf. The spacious accommodation comprises of entrance hall to living room, separate fitted kitchen, bathroom and large double bedroom. The property further benefits from a large decked balcony, double glazing throughout, video entry intercom system and an allocated parking space. The development also benefits from 24 hour concierge and leisure facilities, with fully equipped swimming pool, gymnasium, sauna and spa. EWS1 form in place. No chain. Viewing highly recommended.

**TENURE: LEASEHOLD**

**COUNCIL TAX BAND: E**

**FLOOR AREA APPROX: 635 SQ FT**

**VIEWING: STRICTLY BY APPOINTMENT**

#### **ENTRANCE HALL**

11' 8" x 6' 10" (3.56m x 2.09m)

Entered via wooden door, with security spy hole. Laminate wood effect flooring. Two storage cupboards, one housing hot water tank. Wall mounted video entry intercom system. Wall mounted storage heater.

#### **LIVING ROOM**

12' 11" x 9' 1" (3.94m x 2.79m)

Double glazed uPVC floor to ceiling window and patio door, leading to large balcony. Laminate wood effect flooring. Telephone point. TV aerial point. Wall mounted storage heater. Door leading to kitchen.

#### **KITCHEN**

9' 1" x 7' 2" (2.78m x 2.19m)

Tiled flooring. Fitted units, with work surfaces incorporating stainless steel sink. Ample storage, with over and under unit lighting. Built in oven, with four ring electric hob and stainless steel extractor hood over. Splash back. Extractor fan. Integrated dishwasher. Space for fridge freezer and washing machine. Spotlights.

#### **BEDROOM**

19' 3" x 10' 11" (5.89m x 3.33m)

Double glazed uPVC windows to front. Large double bedroom. Laminate wood effect flooring. Two built in double wardrobes. Telephone point. TV aerial point. Wall mounted electric panel heater.

#### **BATHROOM**

7' 6" x 7' 2" (2.29m x 2.19m)

Spacious bathroom. Tiled flooring. Fully tiled walls. Wall mounted wash hand basin. Panelled bath, with shower over and glass shower screen. W.C. Heated towel rail. Extractor fan.

#### **STORAGE CUPBOARD**

9' 1" x 3' 11" (2.79m x 1.20m)

Exceptionally large storage cupboard in entrance hall.

#### **BALCONY**

11' 5" x 4' 1" (3.49m x 1.27m)

Large decked balcony, with glass surround. External lighting. Accessed from the living room.

#### **PARKING**

One allocated undercroft parking space. Visitor parking.

#### **FACILITIES**

The gated development benefits from 24 hour concierge and leisure facilities, with fully equipped swimming pool, gymnasium, sauna and spa.

#### **TENURE**

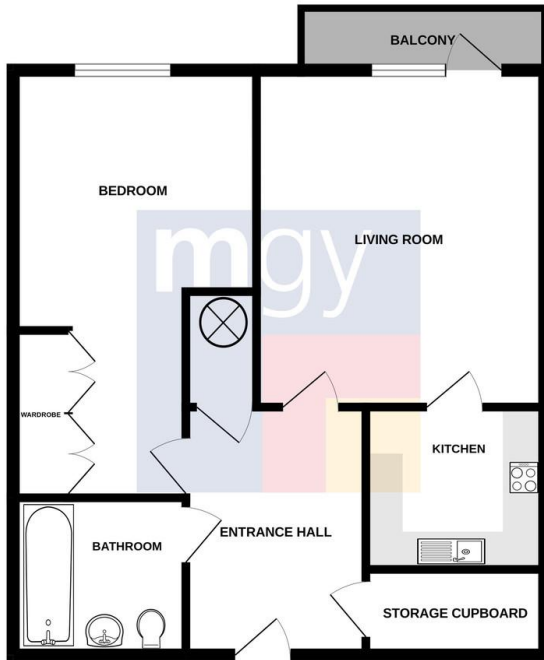
MGY are advised that the property is leasehold, with a term of 999 years from 2001. Service charges of £2,988.56 per annum, which includes water rates, building insurance, onsite concierge and leisure facilities, CCTV, lift maintenance, annual boiler servicing, maintenance of internal and external communal areas, reserve fund contribution, regular cleaning and refuse disposal, bike storage, an allocated undercroft parking space, visitor parking and parking management. Ground rent £154 per annum.



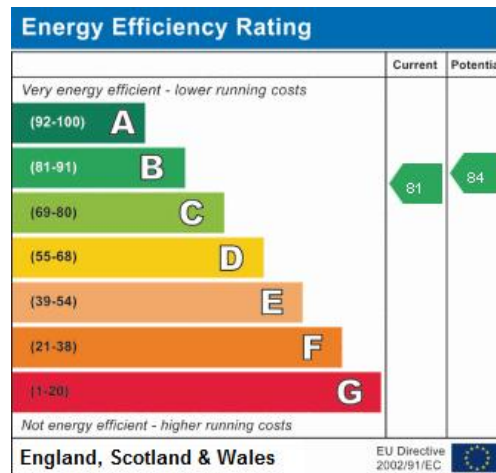
# MONACO HOUSE, LYNTON COURT, CENTURY WHARF, CARDIFF BAY CF10 5NF



# MONACO HOUSE, LYNTON COURT, CENTURY WHARF, CARDIFF BAY CF10 5NF



Whilst every attempt has been made to ensure the accuracy of the footprint contained here, measurements of doors, windows, rooms and any other items are approximate and no responsibility is taken for any error, omission or mis-statement. This plan is for illustrative purposes only and should be used as such by any prospective purchaser. The services, systems and appliances shown have not been tested and no guarantee as to their operability or efficiency can be given. Made with Metropix ©2023



**CARDIFF** 029 2046 5466

13 Mount Stuart Square, Cardiff Bay, Cardiff,  
South Glamorgan, CF10 5EE



**Important Notice:** These particulars are prepared for guidance only and do not form whole or any part of any offer or contract. Whilst the particulars are given in good faith, they are not to be relied upon as being a statement or representation of fact. They are made without responsibility on the part of MGy Ltd or Vendor/lessor and the prospective purchaser/lessee should satisfy themselves by inspection or otherwise as to their accuracy. Neither MGy Ltd nor anyone in their employ, or the vendor/lessor, imply, make or give any representation/warranty whatsoever in relation to this property.

The services of our recommended mortgage brokers and solicitors may be beneficial. While a referral fee may be received if they are chosen, there is no obligation to use their services, and an alternative mortgage provider/solicitor can be chosen.

**MGY.CO.UK**