



32A Hill Lawn, Bristol, BS4 4PH

Guide Price £435,000

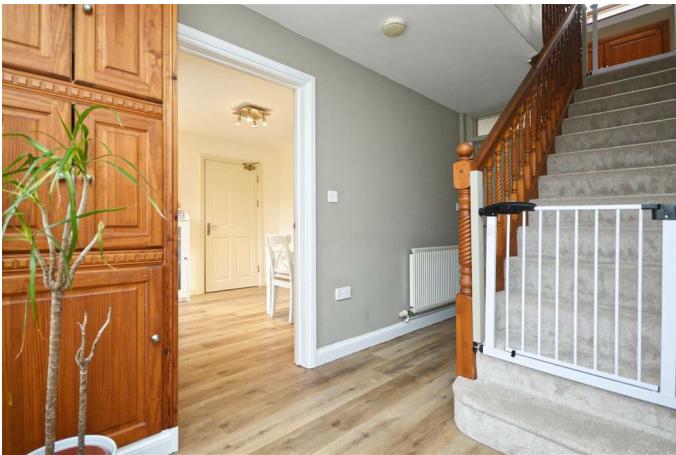
Perfectly situated in the popular Brislington area, this fantastic detached house offers a perfect blend of modern living and serene surroundings. Built in 2001, the property boasts a generous 1,427 square feet of well-designed space, making it an ideal home for couples, families or those just seeking well balanced and spacious accommodation.

Upon entering, you are greeted by a welcoming central entrance hallway that sets the tone for the rest of the home. The property features a full length sitting room with conservatory off, a downstairs w.c, and a large kitchen/dining room which is flooded with natural light. Upstairs, you'll find two spacious bedrooms, with the master having an ensuite bathroom, and a modern shower room, plus an additional study/nursery space.

One of the standout features of this home is its individually built design, which adds a unique character that is often hard to find in modern properties and the local area in general. The gated driveway offers secure parking for up to three vehicles, a rare luxury in today's market, making it perfect for families with multiple cars or for those who enjoy hosting guests. There's also a large garage, with a useful utility area, which can also be accessed directly from the kitchen/dining room.

Situated directly opposite the entrance to Nightingale Valley, residents can enjoy the beauty of nature right on their doorstep. This location not only provides a peaceful environment but also offers easy access to shops and cafés on nearby Sandy Park, popular schools and transport links, ensuring that you are well-connected both to local amenities and the vibrant city of Bristol.

Entrance Hallway



Kitchen Area

10' x 16'5 (3.05m x 5.00m)



Sitting Room

19'4 x 11'6 (5.89m x 3.51m)



W.C

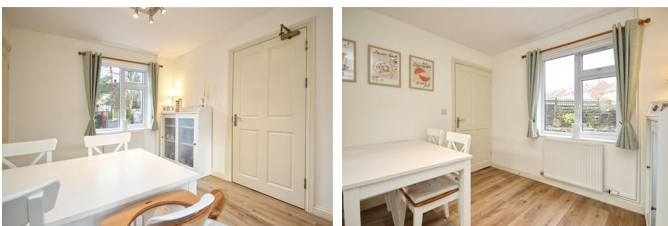


Kitchen/Dining Room



Dining Area

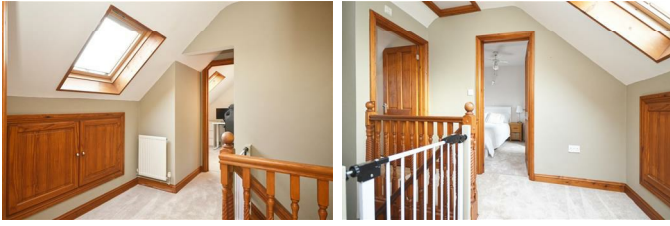
9' x 9'6 (2.74m x 2.90m)



Conservatory



Landing

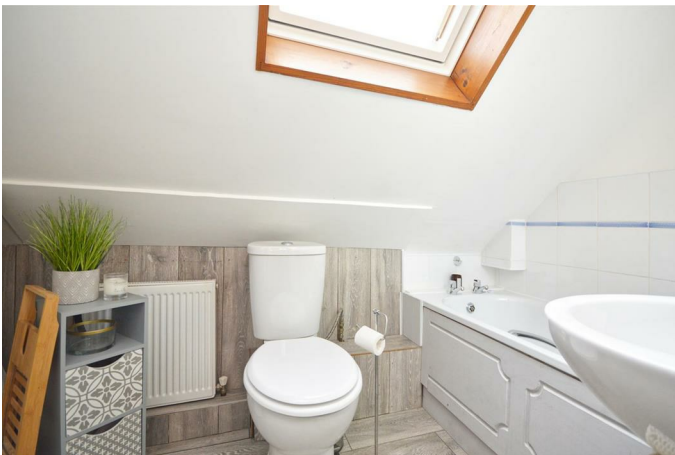


Master Bedroom

11'1 x 9'6 (3.38m x 2.90m)



Ensuite Bathroom



Bedroom Two

9'5 x 11'6 (2.87m x 3.51m)



Nursery/Study

7'2 x 11'7 max (2.18m x 3.53m max)



Shower Room

10'8 x 8'6 (3.25m x 2.59m)



Garden



Garage

17'3 x 9'1 (5.26m x 2.77m)



Driveway

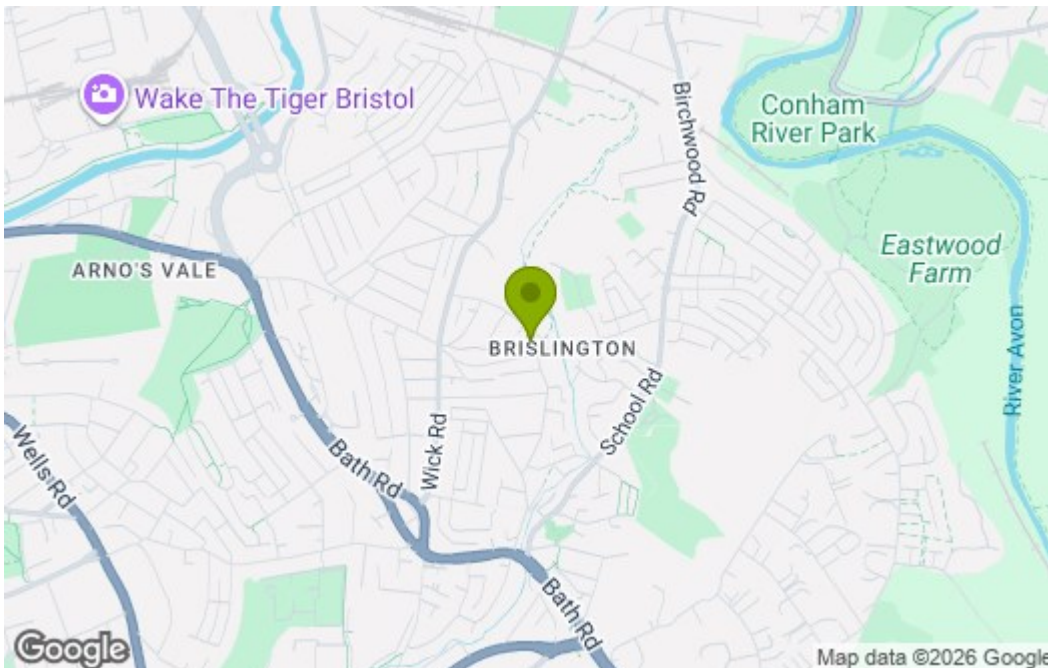


Floor Plan

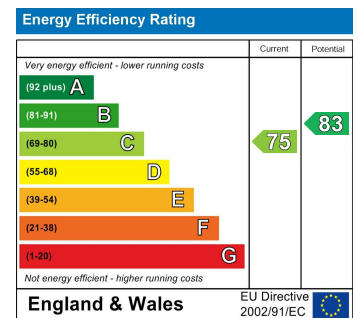


Total area: approx. 132.6 sq. metres (1427.2 sq. feet)
32A Hill Lawn, Bristol

Area Map



Energy Efficiency Graph



These particulars, whilst believed to be accurate are set out as a general outline only for guidance and do not constitute any part of an offer or contract. Intending purchasers should not rely on them as statements of representation of fact, but must satisfy themselves by inspection or otherwise as to their accuracy. No person in this firm's employment has the authority to make or give any representation or warranty in respect of the property.