



WEST HILL, SW18

£500,000

- Victorian ground floor flat
- Two bedrooms
- Large private garden
- Grade II listed building
- Sought after location
- Energy rating: C





ABOUT THE HOME

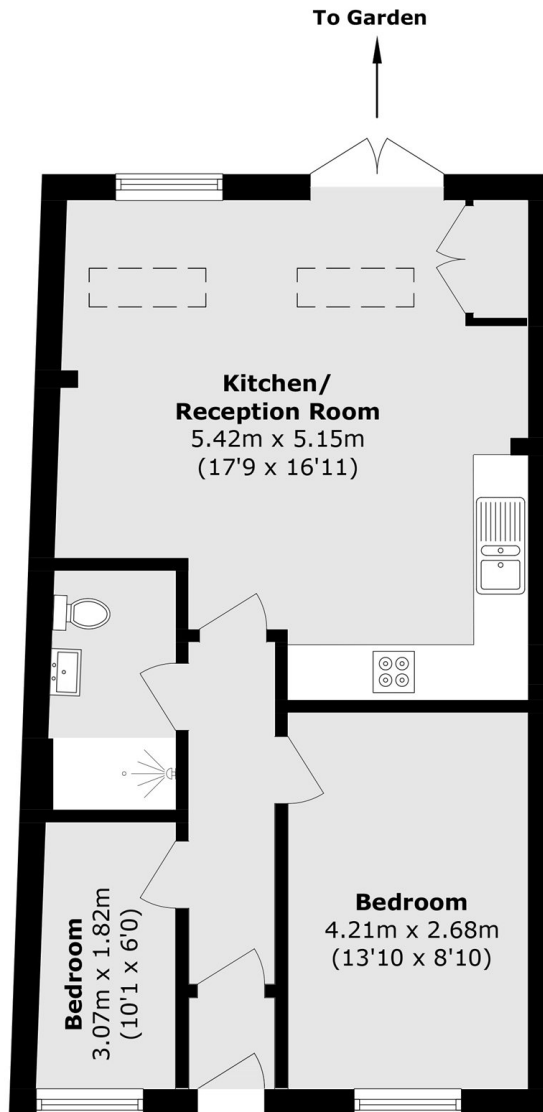
A Victorian two bedroom ground floor apartment with a generous private garden, ideally situated within easy reach of East Putney, Wandsworth Town, and the River Thames.

This Grade II listed apartment is entered via it's own front door. A spacious hallway leads to large open plan kitchen/reception room to the rear with ample room for dining and an abundance of natural light whilst offering an incredible entertaining space. Double doors open out to a large sunny private garden. There is a high speciation bathroom to the middle. To the front is a generous double bedroom as well as a second bedroom currently utilised as a work from home space.

The property is a short walk from East Putney Underground and Wandsworth Town Station for a direct link into London Waterloo as well as being close to the local amenities of Putney High Street, The Putney Exchange Shopping Centre and Southside Shopping Centre.







Total area (approx.): 52.9 sq. m (569.4 sq. ft)

JACKSONS EARLSFIELD

372-374 Garratt Lane,
Earlsfield, London, SW18 4ES
Sales: 020 8971 7979
Lettings: 020 8971 7070

Energy Rating: C We aim to make our particulars both accurate and reliable. However they are not guaranteed; nor do they form part of an offer or contract. If you require clarification on any points then please contact us, especially if you're traveling some distance to view. Please note that appliances and heating systems have not been tested and therefore no warranties can be given as to their good working order.