



Nursery Road | Rugeley | WS15 1EZ

Offers In Excess Of £175,000



## Summary

\*\* NO UPWARD CHAIN \*\* DETACHED BUNGALOW \*\* TWO BEDROOMS \*\* POPULAR LOCATION \*\* LIVING ROOM \*\* KITCHEN \*\* BATHROOM \*\* ENSUITE \*\* CLOSE TO AMENITIES \*\* VIEWING ESSENTIAL \*\*

WEBBS ESTATE AGENTS are pleased to market this two bedroom detached bungalow, located in a popular area of Brereton on Nursery Road. The property is situated close to amenities, schools useful transport links and a short distance to Cannock Chase. The internal accommodation briefly comprises; living room, kitchen two bedrooms, ensuite and bathroom. The property also boasts a driveway for multiple vehicles. Potential purchasers should be made aware that the bungalow is situated to the rear of number 24 and via the shared access driveway.

## Key Features

- NO UPWARD CHAIN
- TWO BEDROOMS
- LIVING ROOM
- BATHROOM
- CLOSE TO AMENITIES
- DETACHED BUNGALOW
- POPULAR LOCATION
- KITCHEN
- ENSUITE
- VIEWING ADVISED

## Rooms and Dimensions

### Living Room

9'3 x 14'0 (2.82m x 4.27m)

### Kitchen

7'7 x 13'11 (2.31m x 4.24m)

### Bedroom 1

10'3 x 9'10 (3.12m x 3.00m)

### Bedroom 2

10'4 x 9'10 (3.15m x 3.00m)

### Bathroom

6'6 x 5'7 (1.98m x 1.70m)

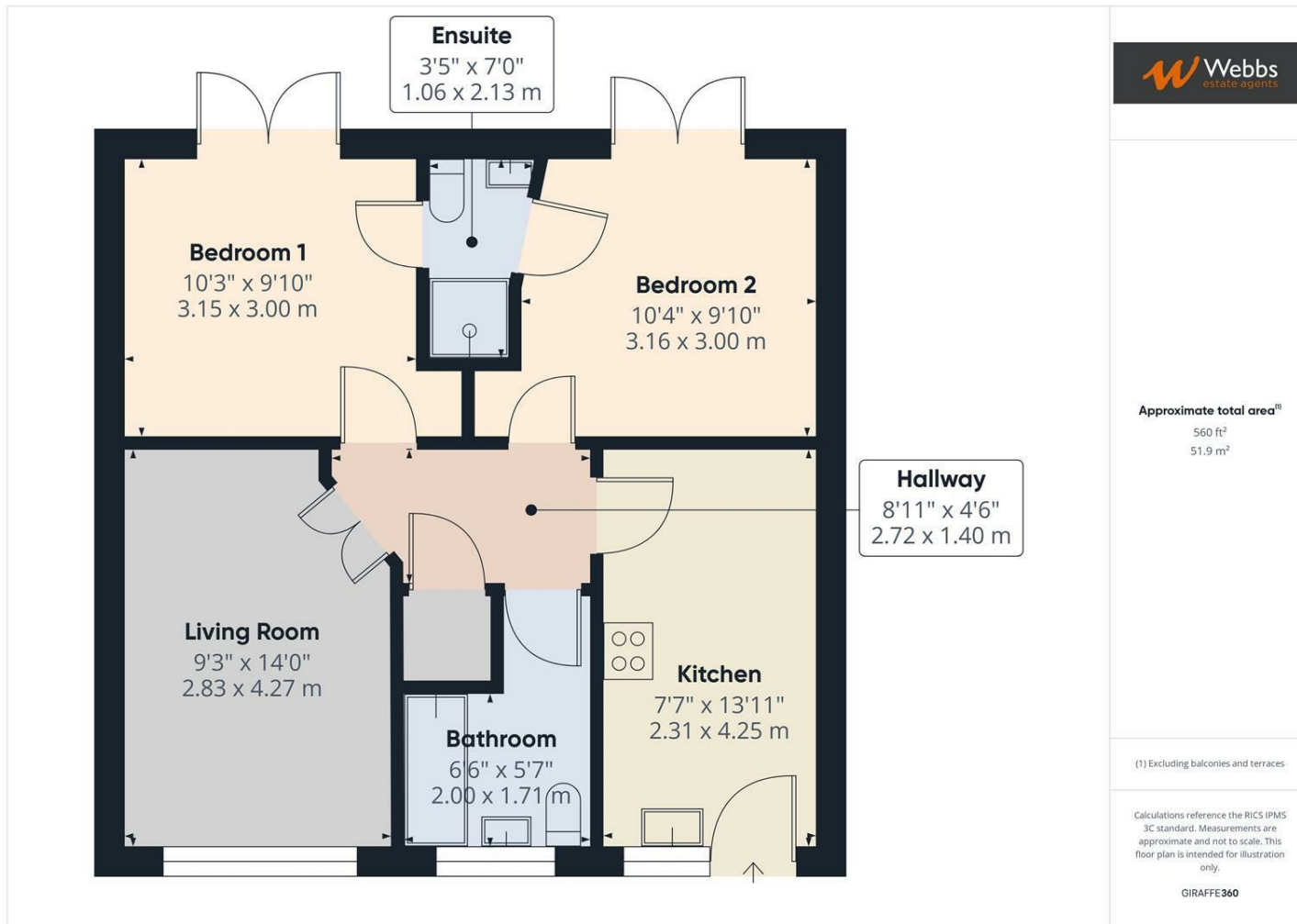
### Ensuite

3'5 x 7'0 (1.04m x 2.13m)

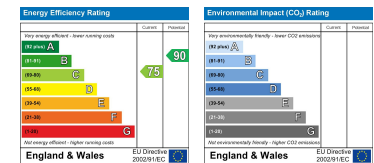
### Identification Checks (R)







Webbs Estate Agents - endeavour to maintain accurate depictions of properties in Virtual Tours, Floor Plans and descriptions, however, these are intended only as a guide and purchasers must satisfy themselves by personal inspection.



Globe House Upper Brook Street, Rugeley, Staffordshire, WS15 2DN

Tel: 01889 583377 | Email: [rugeley@webbsea.co.uk](mailto:rugeley@webbsea.co.uk) | [www.webbestateagents.co.uk](http://www.webbestateagents.co.uk)

