

Holmes Road, NW5

£500,000

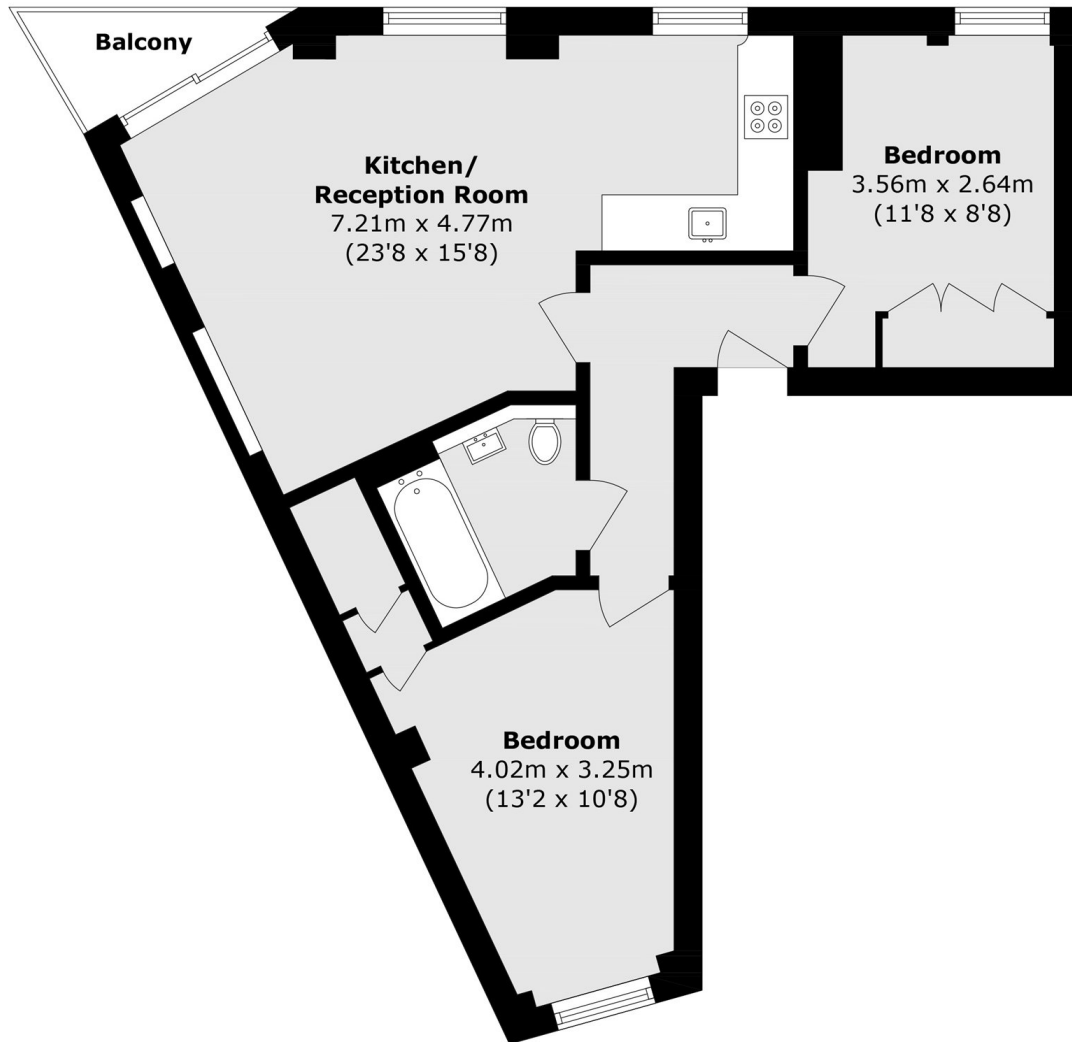
This two double bedroom apartment set on the third floor is in fantastic condition throughout. The apartment has an open plan reception room/kitchen, a share of freehold and a private balcony.

Holmes Road is located within easy reach of the Northern line via Kentish Town station as well as being in close proximity to the local amenities and open spaces of Regents Park and Hampstead Heath.

Features

- Two Double Bedrooms
- One Bathroom
- Private Balcony
- Bike Storage
- Share of Freehold
- Chain Free

Holmes Road, London, NW5



Total area (approx.): 54.8 sq. m (589.8 sq. ft)

Balcony area (approx.): 1.7 sq. m (18.2 sq. ft)