



Crossfield Road

Swiss Cottage, NW3

£3,000 per month
(£692.31 per week)

VIDEO TOUR AVAILABLE A 2 double bedroom raised ground floor apartment in this Victorian conversion boasting wood floors, high ceilings and plenty of storage. The property is situated in the heart of Swiss Cottage (Jubilee Line), within close proximity to the shopping amenities of Englands Lane and Primrose Hill. Accommodation comprises reception room, open plan fully fitted kitchen with breakfast bar, master bedroom with fitted wardrobes, double bedroom, family shower room.

CHESTERTONS



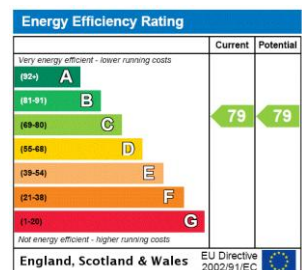
Crossfield Road

Swiss Cottage, NW3

- Raised Ground Floor Apartment in Period Building
- 2 Bedrooms, 1 Bathroom, Reception, Open Plan Fully Fitted Eat In Kitchen
- Wood Floors, High Ceilings
- Situated in Swiss Cottage (Jubilee Line)



Deposit Required: £3,461.54
Local Authority: London Borough Of Camden
Council Tax Band: E
EPC Rating: C
Unfurnished

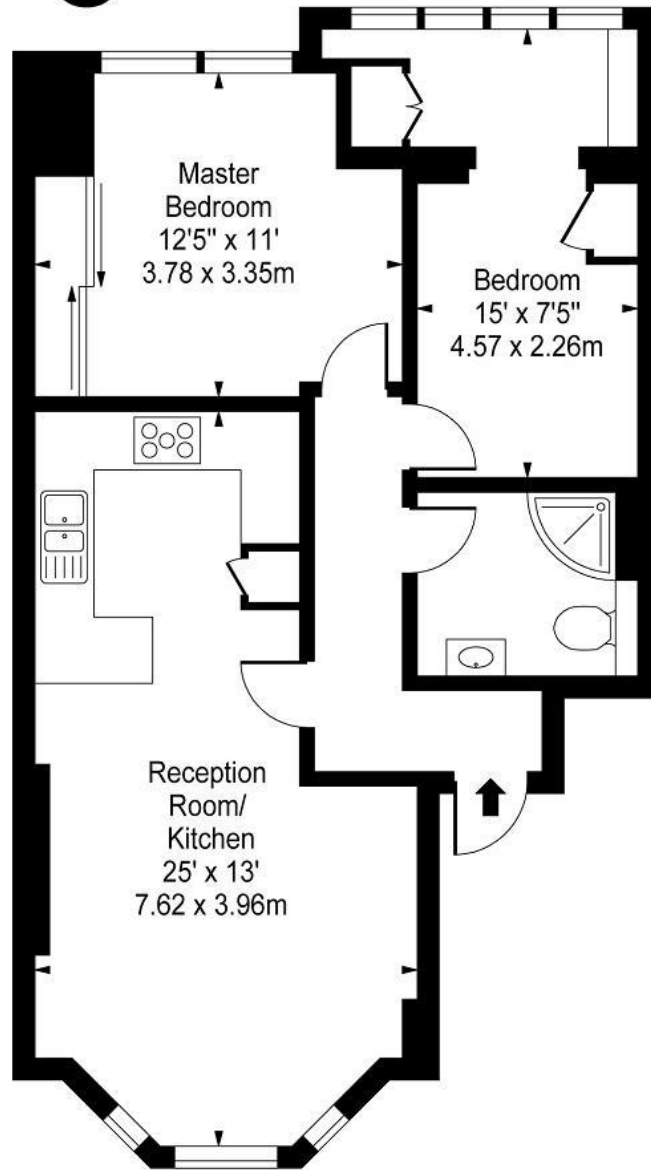
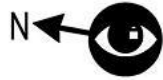


Chestertons Hampstead Lettings

55-56 Hampstead High Street
Hampstead
London
NW3 1QH
hampsteadlettingsusers@chestertons.co.uk
02077941125
chestertons.co.uk

Additional tenant charges apply (fees apply to non-AST tenancies only)
Tenancy Agreement Fee: £300
References per Tenant/Guarantor: £60
Inventory check (approx. £100 – £250 inc. VAT)
chestertons.co.uk/property-to-rent/applicable-fees

Crossfield Road, Swiss Cottage, NW3



Raised Ground Floor

Approx Gross Internal Area **635 Sq Ft - 58.99 Sq M**

For Illustration Purposes Only - Not To Scale

Floor Plan by www.bpmmediagroup.com

Ref: No. P53901

