



**Hammersmith
Grove W6**



Hammersmith Grove W6

ONE BEDROOM

WOOD FLOORING THROUGHOUT

SPACIOUS RECEPTION

SEPARATE FITTED KITCHEN

SHOWER ROOM

CLOSE TO SHOPS AND TRANSPORT

FURNISHED

AVAILABLE 16TH JULY

COUNCIL TAX BAND D

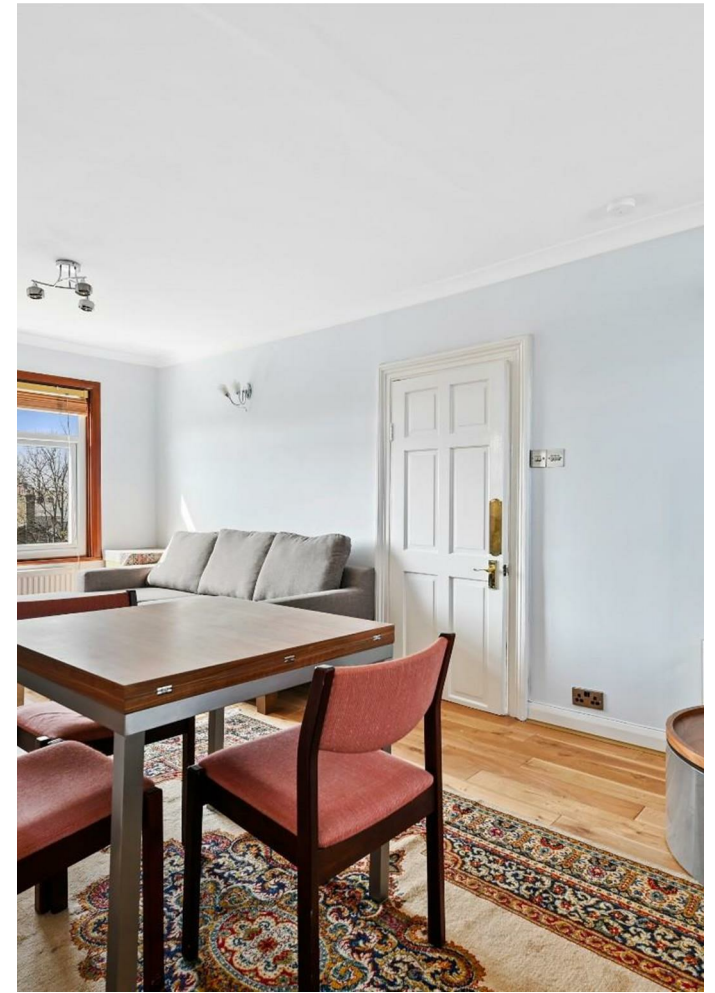


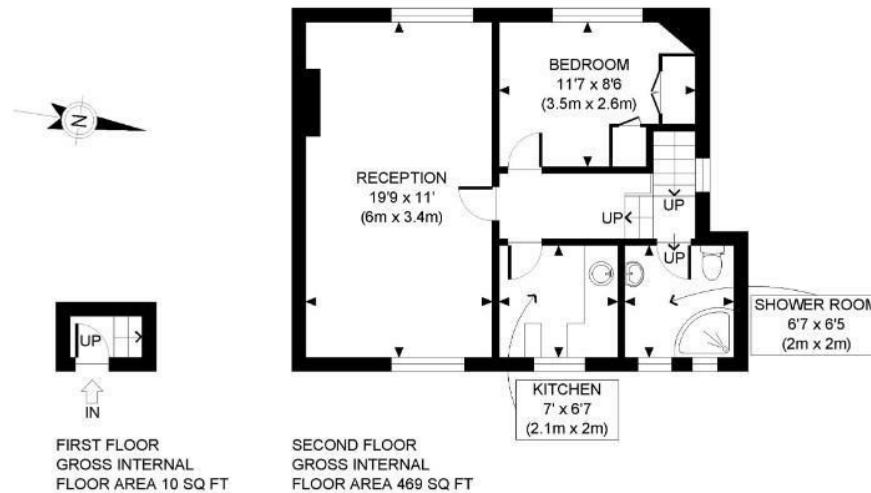
Fantastic one bedroom apartment situated on the top floor of one of the desirable Hammersmith Grove villas, with wood flooring throughout, spacious reception with a decorative fireplace, separate fitted kitchen with a full size fridge and shower room. Located on the edge of Brackenbury Village, close to the local shops and amenities and a short walk to the transport links at Hammersmith and Shepherds Bush. Available 16th July, furnished. Council Tax band D.



£1,850 PER MONTH

SUBJECT TO CONTRACT





APPROX. GROSS INTERNAL FLOOR AREA: 479 SQ FT/ 45 SQM

PROPERTY PHOTO PLANS.CO.UK
ONE STOP SHOP FOR PROPERTY MARKETING

This plan is for illustrative purposes only and should be used as such by any prospective client. Whilst every attempt has been made to ensure the accuracy of the Floor Plan contained here, measurements of the doors, windows, rooms and any other items are approximate and no responsibility is taken for any errors, omissions, or misstatement. The services, systems and appliances shown have not been tested and no guarantee as to the operability or efficiency can be given.