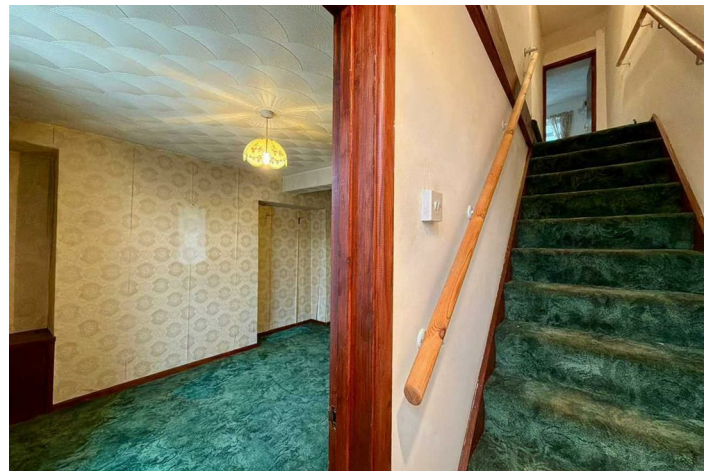


FREEHOLD



House - Terraced (EPC Rating: D)

32 MISKIN ROAD, TONYPANDY, CF40 2QW

Offers Over

£79,995



# 2 Bedroom House - Terraced located in Tonypandy

Nestled on Miskin Road in the charming area of Trealaw, this property is a blank canvas, waiting for someone with vision to transform it into a lovely home. If you are ready to roll up your sleeves and invest some time and effort, this could be the perfect opportunity for you. Don't miss out on the chance to make this house your own!

## Exterior

A set of steps rises to the spacious front garden, predominantly laid to lawn and enjoying open views across the surrounding countryside — a wonderful setting that creates an inviting and picturesque approach to the home.

## Reception Hall

Step through a PVCU double-glazed front door into a welcoming reception hall, featuring a textured ceiling with a central light point and a fitted carpet underfoot. A door from here leads seamlessly into the lounge, setting the tone for comfortable, connected living.

## Lounge

20'8" x 10'6"

A PVCU double-glazed window to the front aspect fills the room with natural light, complementing the tasteful papered décor and smooth ceiling with two central light fittings. The fitted carpet adds warmth underfoot, while a feature fire surround with inset electric fire creates an attractive focal point. Additional benefits include a radiator, ample power points, and useful under-stairs storage. A door provides convenient access through to the kitchen.

## Lounge.

20'8" x 10'6"

Image 2

## Lounge..

20'8" x 10'6"

Image 3

## Kitchen

13'1" x 7'2"

A PVCU double-glazed window and matching door to the rear provide plenty of natural light and direct access outside. The kitchen features a textured ceiling with a central light fitting and is fitted with a range of wall and base units, offering ample storage. Part ceramic tiled walls complement the practical ceramic tiled flooring, while a radiator and multiple power points add everyday convenience.

## Kitchen.

13'1" x 7'2"

Image 2

## Kitchen..

13'1" x 7'2"

Image 3

## Landing Area

Doors lead off to two bedrooms and the family bathroom, creating a practical and well-connected layout. The space also benefits from loft access, a textured ceiling with a central light fitting, and fitted carpet underfoot, enhancing comfort and continuity throughout.

## Bedroom 1

10'7" x 13'5"

Two PVCU double-glazed windows to the front aspect invite in an abundance of natural light, enhancing the bright and airy feel of the room. A textured ceiling with a central light fitting sits above, while fitted carpet underfoot adds warmth and comfort. Multiple power points provide practical convenience.

## Bedroom 1.

10'7" x 13'5"

Image 2

## Bedroom 2

9'9" x 9'5"

PVCU double-glazed windows to the rear. A textured ceiling with a central light fitting sits above, while fitted carpet underfoot adds warmth and comfort. Multiple power points provide practical convenience.

## Bedroom 2.

9'9" x 9'5"

Image 2



#### Bathroom

7'3" x 6'4"

A PVCU double-glazed window to the rear allows for natural light and ventilation. The room features a textured ceiling with a central light fitting, complemented by part ceramic tiled décor and practical vinyl flooring. The bathroom is fitted with a suite comprising a bath, pedestal wash hand basin, and WC, creating a functional and comfortable space.

#### Bathroom

Image 2

Exterior.

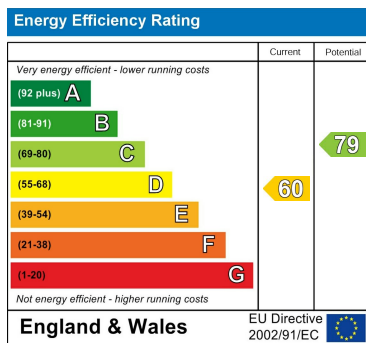
Exterior..



Council Tax Band

A

Energy Performance Graph



Call us on

01443 435599

[sales@osborneestates.co.uk](mailto:sales@osborneestates.co.uk)

[osborneestates.co.uk](http://osborneestates.co.uk)

Agents Note: Whilst every care has been taken to prepare these particulars, they are for guidance purposes only. All measurements are approximate and are for general guidance purposes only and whilst every care has been taken to ensure their accuracy, they should not be relied upon and potential buyers are advised to recheck the measurements.

