



## LYDDEN GROVE, SW18

£500,000

- Victorian ground floor flat
- Two bedrooms
- High specification
- Large private garden
- Sought after location
- Energy rating: C





## ABOUT THE HOME

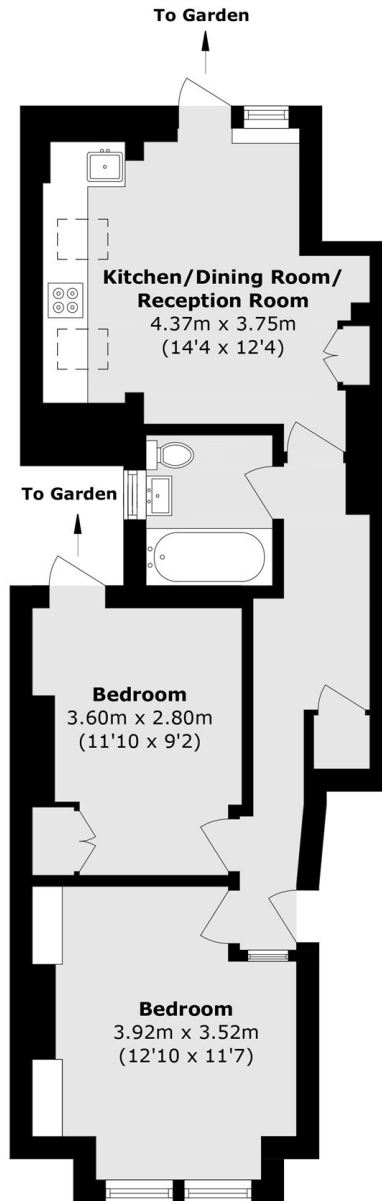
A beautifully presented two-bedroom Victorian ground floor flat with a large private garden, located on a sought-after residential street.

Finished to a high standard throughout, the property offers a bright open-plan kitchen/reception room with integrated appliances and excellent natural light, a generous principal bedroom with fitted wardrobes and direct access to the garden, a second bedroom, and a modern family bathroom. To the rear is an impressive private landscaped garden with raised flower beds and ample space for outdoor dining and entertaining. Further benefits include fitted storage, wooden flooring, and a well-balanced layout throughout.

Lydden Grove is a highly sought-after residential road, ideally positioned between Earlsfield and Wandsworth Town. The area offers an excellent selection of transport links, popular restaurants, bars, leisure facilities and shopping amenities, all within easy reach. The green open spaces of King George's Park are also just a short stroll away, making this an ideal location for both professionals and families alike.







Total area (approx.): 51.7 sq. m (556.5 sq. ft)

#### JACKSONS EARLSFIELD

372-374 Garratt Lane,  
Earlsfield, London, SW18 4ES  
Sales: 020 8971 7979  
Lettings: 020 8971 7070

Energy Rating: C We aim to make our particulars both accurate and reliable. However they are not guaranteed; nor do they form part of an offer or contract. If you require clarification on any points then please contact us, especially if you're traveling some distance to view. Please note that appliances and heating systems have not been tested and therefore no warranties can be given as to their good working order.