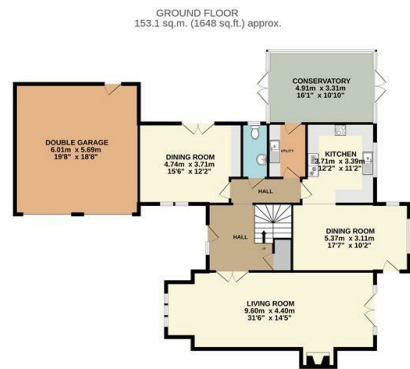




4 The Glen, Wharncliffe Side, Sheffield, S35 0EP

Offers Over £600,000

- No onward chain
- Open plan kitchen/dining room
- Huge principal bedroom with en suite
- Beautiful views over nearby fields
- Nearly 2,500ft² of floor space
- Two further reception rooms
- Off street parking for multiple cars and a double garage
- Incredibly private and quiet location
- Five bedrooms
- In the catchment area for good schools



TOTAL FLOOR AREA: 280.6 sq.m. (3020 sq.ft.) approx.
Measurements are approximate. Not to scale. Excludes other purposes only.
Made with Metaphor 10/20



Directions

Viewings

Viewings by arrangement only. Call 01142 687777 to make an appointment.

Council Tax Band

EPC Rating:

Energy Efficiency Rating		
	Current	Potential
<i>Very energy efficient - lower running costs</i>		
(92 plus) A		
(81-91) B		
(69-80) C		
(55-68) D		
(39-54) E		
(21-38) F		
(1-20) G		
<i>Not energy efficient - higher running costs</i>		
England & Wales	EU Directive 2002/91/EC	