



## VICTORIA ROAD, NW6

£350,000

Share of Freehold  
Chain Free  
One Double Bedroom  
Top Floor Flat  
Close to Queen's Park  
Excellent Transport Links

@marshandparsons  
marshandparsons.co.uk

MARSH &  
PARSONS



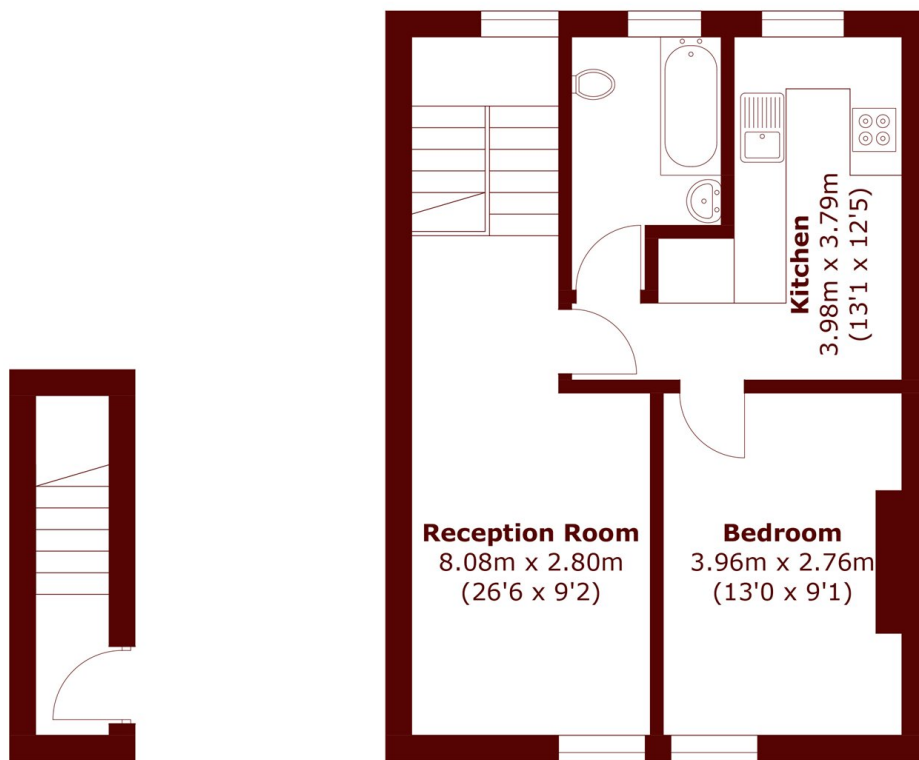
# ABOUT THE PROPERTY

This superb apartment is arranged over the first and second floor and would be ideal as either a first time purchase, investment or pied-à-terre.

Victoria Road is a quiet residential street located within easy reach of the green open spaces of Queen's Park and the restaurants, cafés and amenities of Kilburn High Road and Salusbury Road. Local transport links include Kilburn High Road (London Overground) and Queen's Park (Bakerloo Line).



# STEP INSIDE VICTORIA ROAD



**First Floor**

**Second Floor**

Total area (approx.): 49.3 sq. m (530.5 sq. ft)

**Queen's Park**  
020 7624 4513

Energy Rating: D We aim to make our particulars both accurate and reliable. However, they are not guaranteed; nor do they form part of an offer or contract. If you require clarification on any points then please contact us, especially if you're traveling some distance to view. Please note that appliances and heating systems have not been tested and therefore no warranties can be given as to their good working order

**MARSH &  
PARSONS**