



**3 Bed
Apartment
located
in Battersea**

£4,000 PCM

ORLANDO REID



 **ORLANDO REID**
LONDON

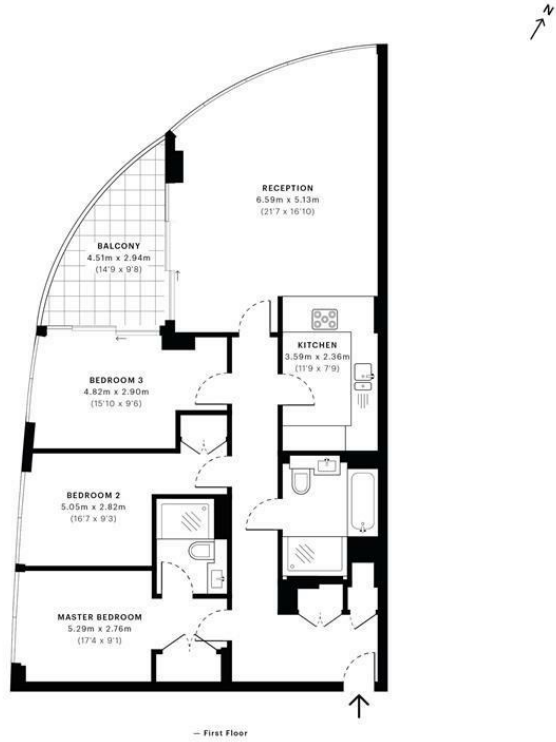


Pinnacle House, SW18

CAPTURE DATE: 17/07/2020 LASER SCAN POINTS: 55,513,571

GROSS INTERNAL AREA

107.41 sqm / 1156.15 sqft



	GROSS INTERNAL AREA (GIA) The footprint of the property 107.41 sqm / 1156.15 sqft		NET INTERNAL AREA (NIA) Excludes walls and structural features Includes mezzanines, restricted head height 101.10 sqm / 1088.23 sqft		EXTERNAL STRUCTURAL FEATURES Balconies, terraces, verandas etc. 8.09 sqm / 87.08 sqft		RESTRICTED HEAD HEIGHT Limited use area under 1.8m 0.00 sqm / 0.00 sqft
--	--	--	--	--	--	--	--



Spec Verified floor plans are produced in accordance with Royal Institution of Chartered Surveyors' Property Measurement Standards. Plots and gardens are illustrative only and excluded from all area calculations. Due to rounding, numbers may not add up precisely. All measurements shown for the individual room lengths and widths are the maximum points of measurements captured in the scan.

IPW138 RESIDENTIAL: 114.17 sqm / 1228.92 sqft
IPW138 RESIDENTIAL: 109.59 sqm / 1178.62 sqft

spec id: 5f04ac3e04a34a7e13fa814c

DIRECTIONS

CONTACT

1-3 Old Town
Clapham
London
SW4 0JT

E: lettings@orlandoreid.co.uk
T: 020 7627 3197
www.orlandoreid.co.uk

Energy Efficiency Rating		
	Current	Potential
Very energy efficient - lower running costs		
(92 plus) A		
(81-91) B	84	84
(69-80) C		
(55-68) D		
(39-54) E		
(21-38) F		
(1-20) G		
Not energy efficient - higher running costs		
EU Directive 2002/91/EC		
England & Wales		

