



# Riverview Gardens

Barnes, SW13

Asking Price  
£950,000

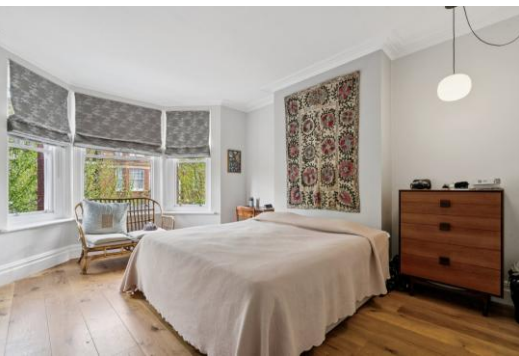
A truly stunning mansion flat located in popular Riverview Gardens, in north Barnes. This three bedroom, second floor apartment has been upgraded in recent years and is presented in immaculate condition.

The property boasts high ceilings and solid wood flooring throughout. It comprises a wide entrance hallway which leads to the main bedroom with bay window and ample fitted wardrobes, a second double bedroom and a smaller third bedroom to the rear of the apartment. There is a modern family bathroom and separate cloakroom.

This apartment benefits from a generous reception room with a fireplace and fitted joinery, which leads to a recently upgraded and very stylish kitchen with space for a table and chairs. There is a balcony from the reception room to the front of the property.

Riverview Gardens is a wonderful mansion block in Barnes with beautifully manicured communal gardens, a resident porter and is located just off Castelnau, next to Hammersmith Bridge. Barnes is a small community with a beautiful village at its heart. The village perfectly balances city and country living thanks to its easy London transport links and the green spaces of Barnes common, Barnes green with its famous duck pond, the London wetland centre and the world famous Richmond Park close-by.

**CHESTERTONS**



# Riverview Gardens

Barnes, SW13

- A Stunning Mansion Flat
- Three Bedrooms
- Open-Plan Reception Room & Kitchen
- New Modern Kitchen
- Balcony
- Wonderful Communal Gardens
- EPC Rating D



## Location / Transport / Schooling

An ideal location for families, the area has outstanding state and private school options, including St Pauls boys and juniors school, the Harrodian, the Swedish school, St. Osmonds, Barnes and Lowther primary schools. You will find everyday amenities such as dry cleaning, small supermarkets and coffee spots on your doorstep alongside a selection of pubs, cafes, delis and restaurants. Local favourites include Alma cafe, the Red Lion pub and Church Road restaurant. Barnes village also holds a farmers market every Saturday.

Hammersmith Station is the closet transport hub, with four underground rail lines (Hammersmith Bridge currently open to foot and cycle traffic). Nearby mainline stations, for regular routes into London Waterloo and out of London, are Barnes and Barnes Bridge.

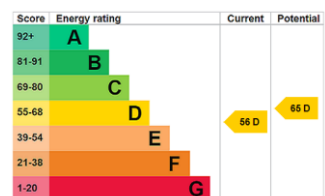
**Tenure:** Share of Freehold – Lease with 979 years remaining

**Service Charge:** £8482 approximately p.a inc sinking fund

**Ground Rent:** £0

**Local Authority:** London Borough of Richmond upon Thames

**Council Tax Band:** E



## Chestertons Barnes Village Sales

68-69 Barnes High Street

Barnes

London

SW13 9LD

barnes@chestertons.co.uk

020 8748 8833

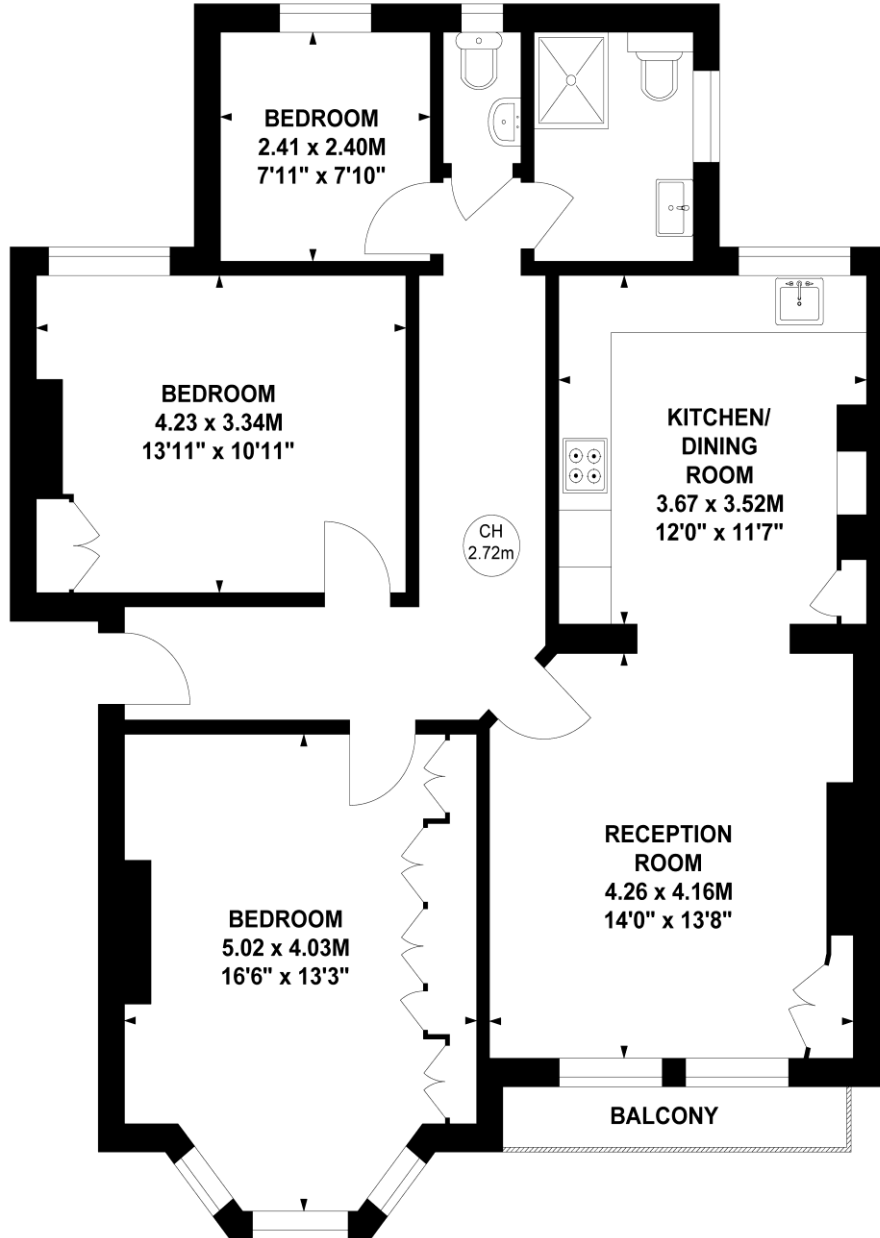
chestertons.co.uk

# Riverview Gardens, SW13

Approximate gross internal area  
91.17 sq m / 981 sq ft



Key :  
CH - Ceiling Height



## Second Floor

Not to scale, for guidance only and must not be relied upon as a statement of fact.  
All measurements and areas are approximate only