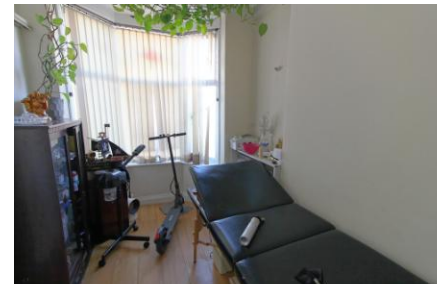




FOR SALE

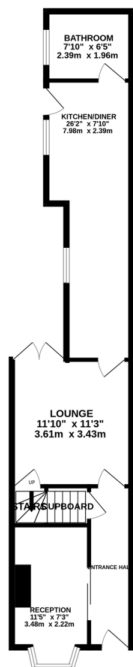
3 Bed Mid Terraced House in Bridge Road, Leicester LE5 3LB
£250,000

Extended and altered palisaded terrace property for sale in Spinney Hills. The adaptations to the property makes the property have flexible options for living arrangements. The accommodation comprises entrance hall, front room, lounge, kitchen diner, bathroom, three bedrooms, w.c upstairs and small courtyard space to the rear.



GROUND FLOOR
538 sq ft. (50.0 sq m) approx.

1ST FLOOR
422 sq ft. (39.2 sq m) approx.



TOTAL FLOOR AREA: 960 sq ft. (89.2 sq m) approx.
Whilst every attempt has been made to ensure the accuracy of the floorplan depicted here, measurements of doors, windows, rooms and any other items are approximate and no responsibility is taken for any error, omission or mis-statement. This plan is for illustrative purposes only and should be used as such for any prospective purchaser. The services, systems and appliances shown have not been tested and no guarantee as to their capability or efficiency can be given.
Made with Metreplan 10/2016

EPC to follow

- Palisaded Terrace
- Loft Conversion
- Rear Garden
- En-Suite To Master
- Three Bedrooms
- Ground Floor Extension
- Spacious
- Four Piece Bathroom Suite

Agents Note: Whilst every care has been taken to prepare these sales particulars, they are for guidance purposes only. All measurements are approximate and for general guidance purposes only and whilst every care has been taken to ensure their accuracy, they should not be relied upon and potential buyers are advised to recheck the measurements.

