



HEARNES

WHERE SERVICE COUNTS

Yelverton, Ashley Drive North, BH24 2JN

A delightful, private and established plot (approaching 0.25 acres) with gardens to the side and rear, plenty of parking and a detached double garage, are just a few features of this beautifully presented, spacious and stylish bungalow, that offers both flexible and well thought out accommodation.

This impressive home is located approximately 500 metres from stunning walks and trails at Ringwood Forest and conveniently located for easy access to the A31 (around 1 mile distant).

There are four double bedrooms serviced by two sleek, modern bath/shower rooms with the option of the dressing room in bedroom two being easily turned into a 3rd.

The heart of the property is a stunning, open plan kitchen/dining/living room, tied together with driftwood style flooring. This fantastic space has been thoughtfully designed to enjoy the views to the rear of the private gardens. The kitchen/breakfast area has been comprehensively fitted in a range of gloss fronted units with contrasting quartz worktops and high quality built-in appliances.

The dining room has bi-fold doors whilst the sitting room has a stunning, vaulted ceiling.

The property further benefits from gas central heating, double glazing a security alarm system.

The gardens are divided into two distinct areas. One to the rear, which is south facing and extends to around 70' in width and one to the side, that similarly measures around 70' in depth. They are enclosed by fencing with established hedging, well-tended lawns and a paved seating area (accessed by doors from the dining area).

To the front is extensive parking and turning with a further driveway to the side which accesses the detached double garage.

Local Authority: Dorset

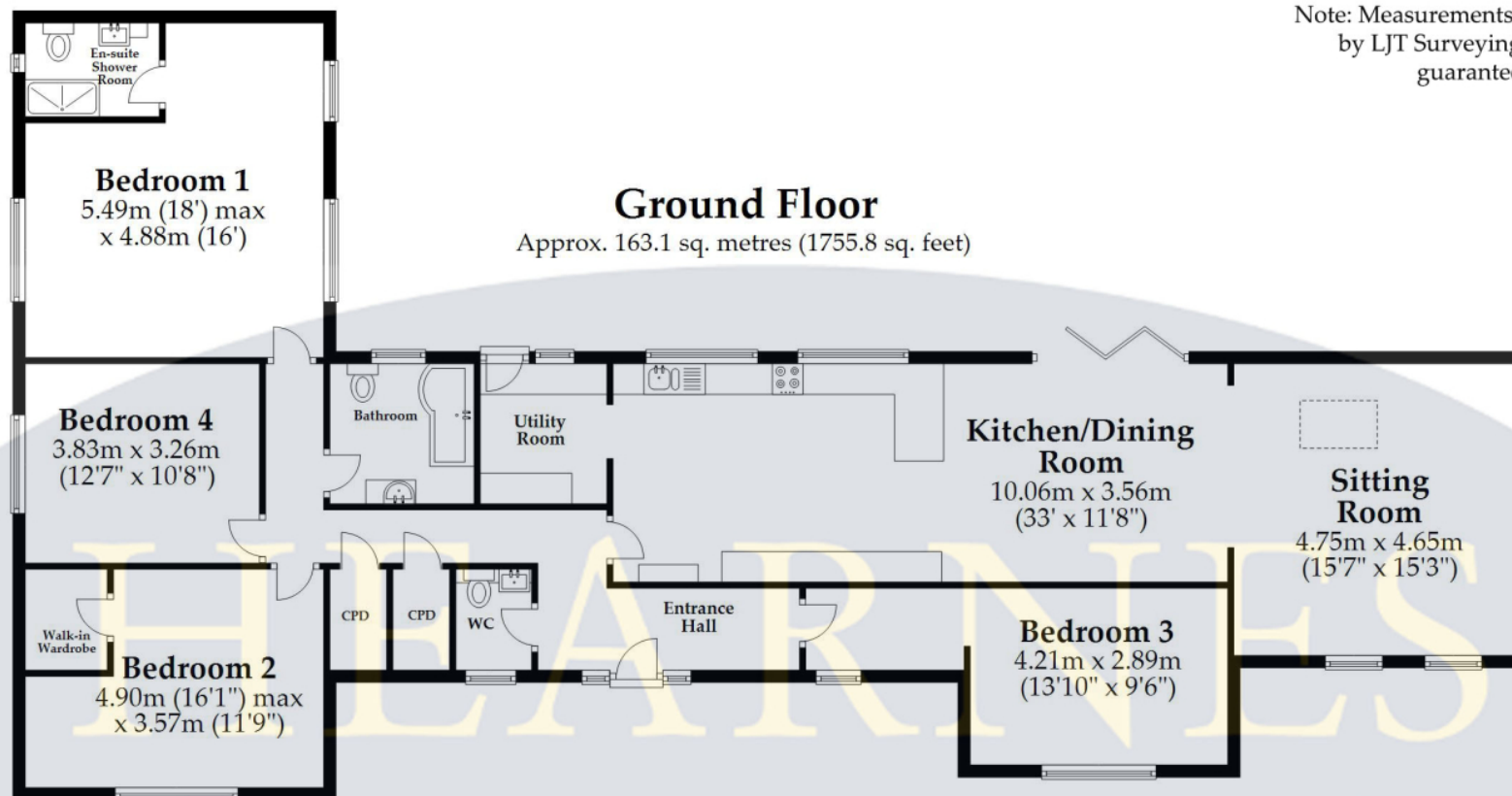
Council Tax Band: F

Energy Performance Certificate: Rating D





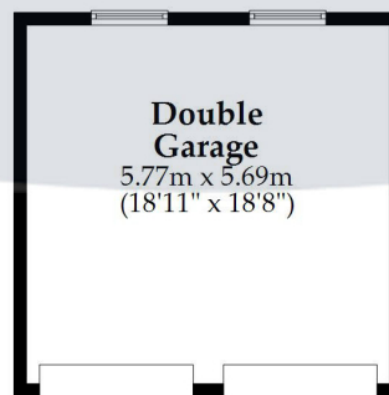
Note: Measurements were not taken
by LJT Surveying and we cannot
guarantee their accuracy.



Garage

WHERE SERVICE COUNTS

Approx. 32.8 sq. metres (353.0 sq. feet)



Total area: approx. 195.9 sq. metres (2108.9 sq. feet)

This plan is not to scale and is for general guidance only. LJT Surveying Ltd Ringwood





www.hearnes.com

52-54 High Street, Ringwood, Hampshire

Tel : Email : anthony@hearnes.com

OFFICES ALSO AT: BOURNEMOUTH, FERNDOWN, POOLE & WIMBORNE