



Living
made
better

Mizzen Mast House
Woolwich, SE18 5NP



£2,500 PCM

Mizzen Mast House, Woolwich, SE18 5NP

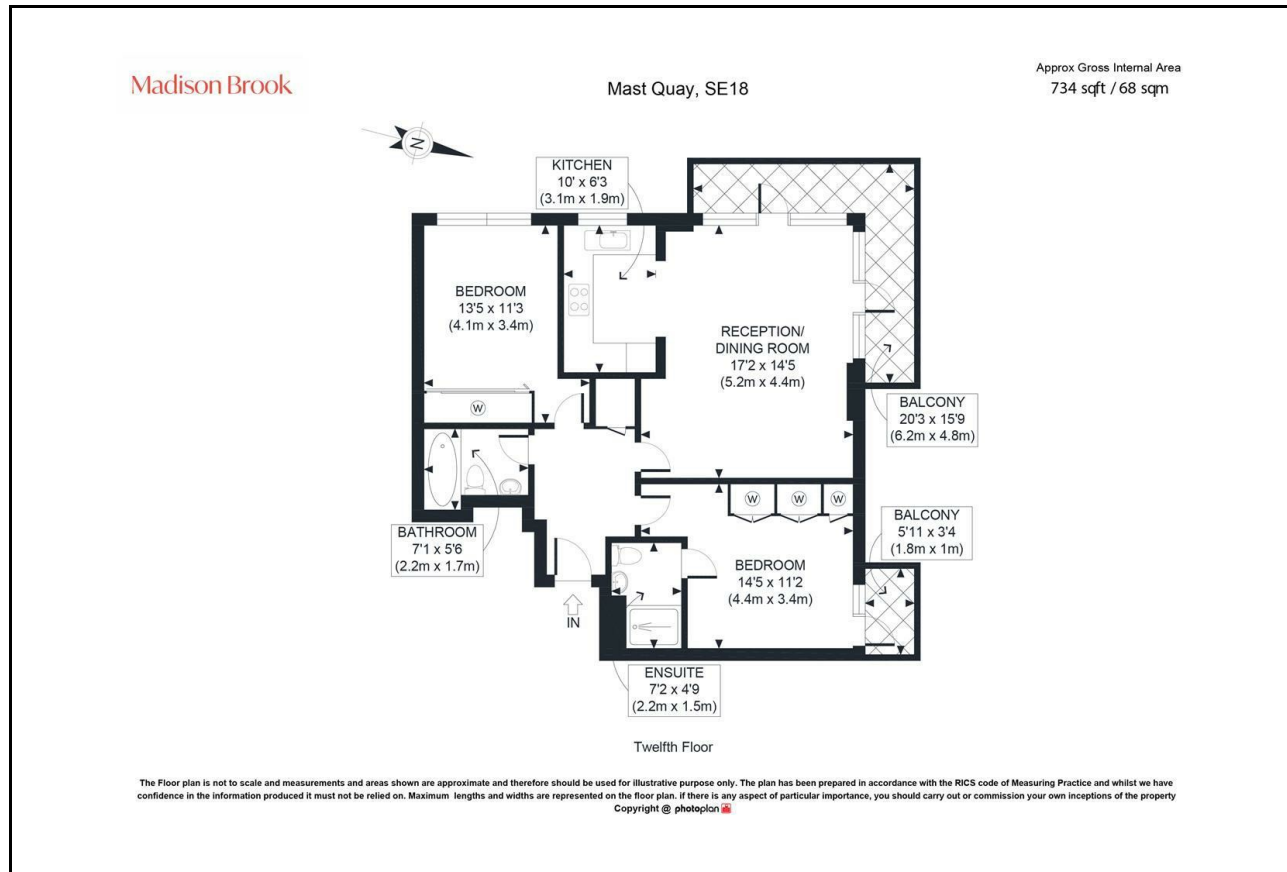
Madison Brook

Property Summary

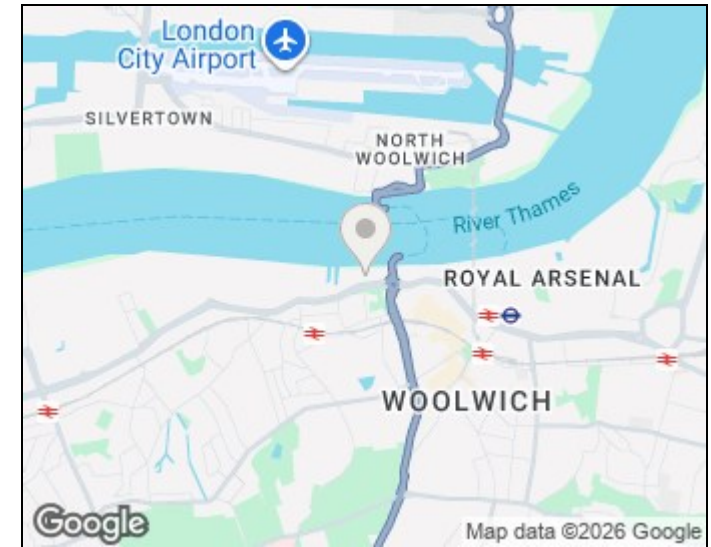
Positioned on the twelfth floor of the popular Mast Quay development, this well-presented two-bedroom apartment offers approximately 734 sq.ft. of bright and contemporary living space. The property features a spacious reception and dining room with direct access to a large private balcony, a separate fitted kitchen is well-appointed, two double bedrooms that benefit from built-in storage, an en-suite shower room, and a modern family bathroom.

Residents benefit from a concierge service, secure allocated parking and a prime location moments from Woolwich Riverside.

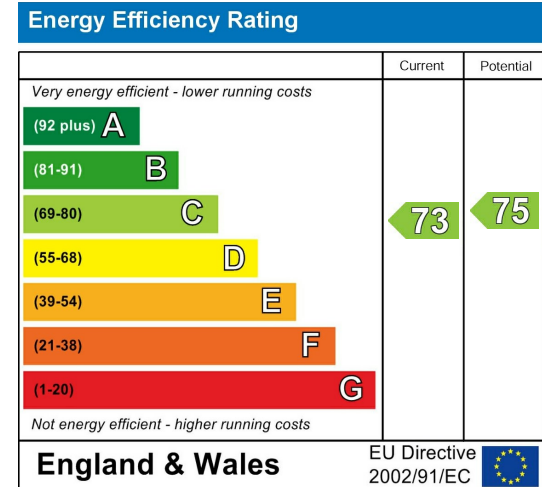
Floorplan



Area Map



Energy Efficiency Graph



43 Loampit Vale, Lewisham, London, SE13 7FT

Tel: 020 3946 6200 Email:

lewisham@madisonbrook.com

<https://madisonbrook.com/>

These particulars, whilst believed to be accurate are set out as a general outline only for guidance and do not constitute any part of an offer or contract. Intending purchasers should not rely on them as statements of representation of fact, but must satisfy themselves by inspection or otherwise as to their accuracy. No person in this firm's employment has the authority to make or give any representation or warranty in respect of the property.